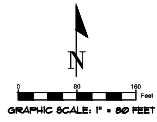


PLAT OF AMBERWOODS

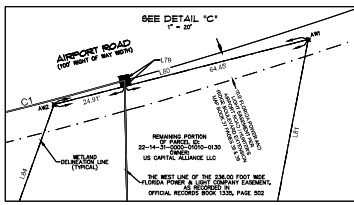
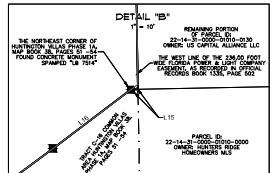
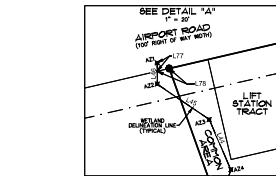
A PORTION OF SECTION 22, TOWNSHIP 14 SOUTH, RANGE 31 EAST
FLAGLER COUNTY, FLORIDA



- LEGEND**
- = SET 1/2" REBAR & CAP, L.B. 8326
 - △ = SET NAIL & DISC, L.B. 8326
 - = FOUND 3"X3" CONCRETE MONUMENT MARKED "LB 7246"
 - = FOUND 1/2" REBAR & CAP MARKED "LB 7246"
 - = FOUND 1/2" REBAR & CAP MARKED "LB 7246"
 - ⊠ = FOUND NATION GEODETIC SURVEY CONTROL POINT "79 90 OPS 4"
 - ▲ = FOUND NAIL & DISC (MARKED AS NOTED)
 - ⊕ = SEASONAL HIGH WATER MARK (SET BY OTHERS)
 - B.F.E. = BASE FLOOD ELEVATION
 - B.M. = BENCHMARK
 - M.F.E. = MINIMUM FINISHED FLOOR ELEVATION
 - D.M. = DRAINAGE MANAGEMENT AGENCY
 - F.I.M. = FLOOD INSURANCE RATE MAP
 - FOOT = FLORIDA DEPARTMENT OF TRANSPORTATION
 - FP = FOUND IRON PIPE
 - FR = FOUND IRON ROD
 - FO = FOUND
 - IDENTIFICATION
 - S.M.A. = THE SUCCESSORS AND/OR ASSIGNS
 - ASMA = AS SHOR INTEREST MAY APPEAR
 - NAVD = NORTH AMERICAN VERTICAL DATUM
 - L.S. = LEGAL SURVEY RECORD BOOK
 - PC = POINT OF CURVATURE
 - PT = POINT OF TANGENCY
 - P.I. = POINT OF INTERSECTION
 - P.O.B. = POINT OF BEGINNING
 - P.O.C. = POINT OF COMMENCEMENT
 - P.O.R. = POINT OF REFERENCE
 - P.L.S. = PROFESSIONAL LAND SURVEYOR
 - PRM = PERMANENT REFERENCE MARKER
 - P.S. = PROFESSIONAL SURVEYOR AND MAPPER
 - P.U.E. = PUBLIC UTILITIES EASEMENT
 - R.W. = RIGHT OF WAY
 - SE = SURVEY ELEVATION
 - TA = TAX PARCEL
 - X29 = WETLAND PLANS AND DESIGNATION NUMBER

LINE #	DIRECTION	LENGTH
L1	N 09° 27' 47" W	36.26
L2	R 26° 20' 04" W	22.07
L3	N 10° 50' 01" E	42.24
L4	S 12° 30' 31" E	41.68
L5	N 11° 52' 01" W	34.28
L6	UNK	UNK
L7	S 22° 52' 12" W	35.79
L8	N 7° 12' 51" E	46.26
L9	R 22° 52' 12" W	34.03
L10	R 12° 52' 12" W	27.27
L11	N 10° 50' 01" E	37.02
L12	N 10° 50' 01" E	37.02
L13	N 10° 50' 01" E	37.02
L14	R 12° 52' 12" W	27.27
L15	R 12° 52' 12" W	27.27
L16	R 12° 52' 12" W	27.27
L17	R 12° 52' 12" W	27.27
L18	R 12° 52' 12" W	27.27
L19	R 12° 52' 12" W	27.27
L20	R 12° 52' 12" W	27.27
L21	R 12° 52' 12" W	27.27
L22	R 12° 52' 12" W	27.27
L23	R 12° 52' 12" W	27.27
L24	R 12° 52' 12" W	27.27
L25	R 12° 52' 12" W	27.27
L26	R 12° 52' 12" W	27.27
L27	R 12° 52' 12" W	27.27
L28	R 12° 52' 12" W	27.27
L29	R 12° 52' 12" W	27.27
L30	R 12° 52' 12" W	27.27
L31	R 12° 52' 12" W	27.27
L32	R 12° 52' 12" W	27.27
L33	R 12° 52' 12" W	27.27
L34	R 12° 52' 12" W	27.27
L35	R 12° 52' 12" W	27.27
L36	R 12° 52' 12" W	27.27
L37	R 12° 52' 12" W	27.27
L38	R 12° 52' 12" W	27.27
L39	R 12° 52' 12" W	27.27
L40	R 12° 52' 12" W	27.27
L41	R 12° 52' 12" W	27.27
L42	R 12° 52' 12" W	27.27
L43	R 12° 52' 12" W	27.27
L44	R 12° 52' 12" W	27.27
L45	R 12° 52' 12" W	27.27
L46	R 12° 52' 12" W	27.27
L47	R 12° 52' 12" W	27.27
L48	R 12° 52' 12" W	27.27
L49	R 12° 52' 12" W	27.27
L50	R 12° 52' 12" W	27.27
L51	R 12° 52' 12" W	27.27
L52	R 12° 52' 12" W	27.27
L53	R 12° 52' 12" W	27.27
L54	R 12° 52' 12" W	27.27
L55	R 12° 52' 12" W	27.27
L56	R 12° 52' 12" W	27.27
L57	R 12° 52' 12" W	27.27
L58	R 12° 52' 12" W	27.27
L59	R 12° 52' 12" W	27.27
L60	R 12° 52' 12" W	27.27
L61	R 12° 52' 12" W	27.27
L62	R 12° 52' 12" W	27.27
L63	R 12° 52' 12" W	27.27
L64	R 12° 52' 12" W	27.27
L65	R 12° 52' 12" W	27.27
L66	R 12° 52' 12" W	27.27
L67	R 12° 52' 12" W	27.27
L68	R 12° 52' 12" W	27.27
L69	R 12° 52' 12" W	27.27
L70	R 12° 52' 12" W	27.27
L71	R 12° 52' 12" W	27.27
L72	R 12° 52' 12" W	27.27
L73	R 12° 52' 12" W	27.27
L74	R 12° 52' 12" W	27.27
L75	R 12° 52' 12" W	27.27
L76	R 12° 52' 12" W	27.27
L77	R 12° 52' 12" W	27.27
L78	R 12° 52' 12" W	27.27
L79	R 12° 52' 12" W	27.27
L80	R 12° 52' 12" W	27.27
L81	R 12° 52' 12" W	27.27
L82	R 12° 52' 12" W	27.27
L83	R 12° 52' 12" W	27.27
L84	R 12° 52' 12" W	27.27
L85	R 12° 52' 12" W	27.27
L86	R 12° 52' 12" W	27.27
L87	R 12° 52' 12" W	27.27
L88	R 12° 52' 12" W	27.27
L89	R 12° 52' 12" W	27.27
L90	R 12° 52' 12" W	27.27
L91	R 12° 52' 12" W	27.27
L92	R 12° 52' 12" W	27.27
L93	R 12° 52' 12" W	27.27
L94	R 12° 52' 12" W	27.27
L95	R 12° 52' 12" W	27.27
L96	R 12° 52' 12" W	27.27
L97	R 12° 52' 12" W	27.27
L98	R 12° 52' 12" W	27.27
L99	R 12° 52' 12" W	27.27
L100	R 12° 52' 12" W	27.27

CURVE TABLE					
CURVE #	LENGTH	RADIUS	DELTA	TANGENT	CHORD DISTANCE
C1	100.00	100.00	90.00	141.42	141.42
C2	100.00	100.00	90.00	141.42	141.42
C3	100.00	100.00	90.00	141.42	141.42
C4	100.00	100.00	90.00	141.42	141.42
C5	100.00	100.00	90.00	141.42	141.42
C6	100.00	100.00	90.00	141.42	141.42
C7	100.00	100.00	90.00	141.42	141.42
C8	100.00	100.00	90.00	141.42	141.42
C9	100.00	100.00	90.00	141.42	141.42
C10	100.00	100.00	90.00	141.42	141.42



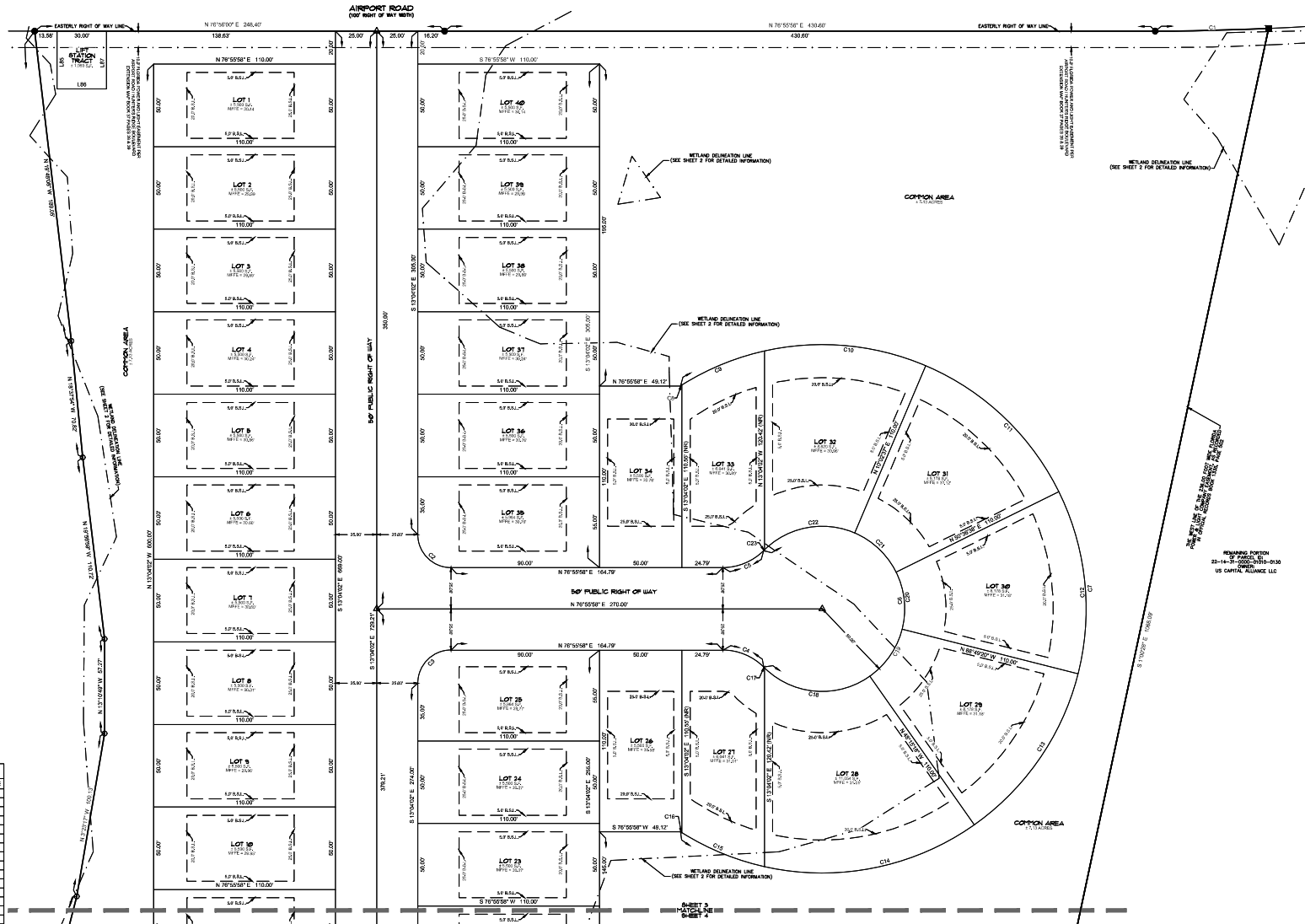
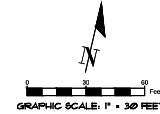
NATIONAL GEODETIC SURVEY
DESIGNATION 79 90 OPS 4
N: 1782262.64
E: 604434.60

- THIS PLAT PREPARED BY -
LANDGARD, LLC
LAND SURVEYING & MAPPING
10065 N.W. 136TH DRIVE
ALACHUA, FLORIDA 32615
PHONE: 352.493.0640
Licenses: Business No. 8326

PLAT OF AMBERWOODS

A PORTION OF SECTION 22, TOWNSHIP 14 SOUTH, RANGE 31 EAST
FLAGLER COUNTY, FLORIDA

PLAT BOOK _____ PAGE _____
SHEET 3 OF 4



- LEGEND:**
- = SET 1/2" REBAR & CAP, L.B. 8328
 - △ = SET 3/4" IRON L.B. 8328
 - = FOUND 3/4" CONCRETE MONUMENT MARKED "LB 7248"
 - ⊙ = FOUND 1/2" REBAR & CAP MARKED "LB 7248"
 - ⊠ = FOUND NATION GEODETIC SURVEY CONTROL POINT "79 90 03 4"
 - ▲ = FOUND NAIL & DISK (MARKED AS NEEDED)
 - ⊕ = SEASONAL HIGH WATER MARK (SET BY OTHERS)
 - B.F.E. = BASE FLOOD ELEVATION
 - B.S.L. = BUILDING REFERENCE ELEVATION
 - M.F.E. = MINIMUM FINISHED FLOOR ELEVATION
 - CM = CONCRETE MONUMENT
 - HA = HAWAIIAN ARCHITECTURAL MONUMENT
 - FLM = FLOOD INSURANCE RATE MAP
 - FDOT = FLORIDA DEPARTMENT OF TRANSPORTATION
 - FP = FOUND IRON PIPE
 - FB = FOUND BOLT
 - FD = FOUND DISK
 - ID = IDENTIFICATION
 - SM = 1/4" SECTION AND/OR ASSING
 - ASMA = AS THEIR INTEREST MAY APPEAR
 - LB = LOCATED BURNER
 - NAVD = NORTH AMERICAN VERTICAL DATUM
 - Q.M.S. = OFFICIAL RECORD BOOK
 - PC = POINT OF CURVATURE
 - PI = POINT OF INTERSECTION
 - POB = POINT OF BEGINNING
 - P.O.C. = POINT OF COMMENCEMENT
 - P.O.R. = POINT OF REFERENCE
 - P.L.S. = PROFESSIONAL LAND SURVEYOR
 - PRM = PERMANENT REFERENCE MARKER
 - PRO = PROFESSIONAL SURVEYOR AND MAPPER
 - P.T.E. = PUBLIC UTILITY EASEMENT
 - R/W = RIGHT OF WAY
 - S.F. = SQUARE FEET
 - T.P. = TAP PAVEMENT
 - W.P. = WETLAND FLAG AND DESIGNATION NUMBER

LINE TABLE

LINE #	DIRECTION	LENGTH
LS	N 13°54'57" W	35.00'
LM	S 89°59'59" W	30.00'
LT	S 1°00'00" E	74.00'

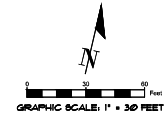
CURVE TABLE

CURVE #	LENGTH	RADIUS	DELTA (°)	TANGENT	CHORD BEARING	CHORD DISTANCE
C1	18.87	102.00	27°24'	34.00	N 70°02'00" E	30.00
C2	33.27	20.00	87°00'	33.00	S 89°42'00" E	30.00
C3	74.00	20.00	87°00'	30.00	S 89°42'00" E	30.00
C4	27.28	20.00	45°00'	14.00	N 67°00'00" W	20.00
C5	27.28	20.00	45°00'	14.00	N 67°00'00" W	20.00
C6	28.00	20.00	120°00'	48.00	N 120°00'00" W	30.00
C7	80.00	100.00	240°00'	20.00	S 120°00'00" E	20.00
C8	124.00	100.00	120°00'	0.00	N 44°00'00" E	124.00
C9	80.00	100.00	120°00'	20.00	N 44°00'00" E	80.00
C10	80.00	100.00	120°00'	20.00	N 44°00'00" E	80.00
C11	112.28	100.00	45°00'	30.00	S 59°42'00" E	110.00
C12	112.28	100.00	45°00'	30.00	S 59°42'00" E	110.00
C13	112.28	100.00	45°00'	30.00	S 59°42'00" E	110.00
C14	122.28	100.00	45°00'	30.00	S 59°42'00" W	120.00
C15	122.28	100.00	45°00'	30.00	S 59°42'00" W	120.00
C16	124.00	100.00	120°00'	0.00	N 44°00'00" W	124.00
C17	80.00	100.00	120°00'	20.00	N 44°00'00" W	80.00
C18	80.00	100.00	120°00'	20.00	N 44°00'00" W	80.00
C19	30.00	20.00	45°00'	14.00	N 67°00'00" W	20.00
C20	30.00	20.00	45°00'	14.00	N 67°00'00" W	20.00
C21	18.87	102.00	27°24'	34.00	S 89°42'00" W	30.00
C22	18.87	102.00	27°24'	34.00	S 89°42'00" W	30.00
C23	18.87	102.00	27°24'	34.00	S 89°42'00" W	30.00
C24	18.87	102.00	27°24'	34.00	S 89°42'00" W	30.00
C25	18.87	102.00	27°24'	34.00	S 89°42'00" W	30.00
C26	18.87	102.00	27°24'	34.00	S 89°42'00" W	30.00
C27	18.87	102.00	27°24'	34.00	S 89°42'00" W	30.00
C28	18.87	102.00	27°24'	34.00	S 89°42'00" W	30.00
C29	18.87	102.00	27°24'	34.00	S 89°42'00" W	30.00
C30	18.87	102.00	27°24'	34.00	S 89°42'00" W	30.00
C31	18.87	102.00	27°24'	34.00	S 89°42'00" W	30.00
C32	18.87	102.00	27°24'	34.00	S 89°42'00" W	30.00
C33	18.87	102.00	27°24'	34.00	S 89°42'00" W	30.00
C34	18.87	102.00	27°24'	34.00	S 89°42'00" W	30.00
C35	18.87	102.00	27°24'	34.00	S 89°42'00" W	30.00
C36	18.87	102.00	27°24'	34.00	S 89°42'00" W	30.00
C37	18.87	102.00	27°24'	34.00	S 89°42'00" W	30.00
C38	18.87	102.00	27°24'	34.00	S 89°42'00" W	30.00
C39	18.87	102.00	27°24'	34.00	S 89°42'00" W	30.00
C40	18.87	102.00	27°24'	34.00	S 89°42'00" W	30.00

- THIS PLAT PREPARED BY -
LANDGARD, LLC
LAND SURVEYING & MAPPING
10065 N.W. 136TH DRIVE
ALACHUA, FLORIDA 32015
PHONE: 352.493.0640
Licensure Business No. 8326

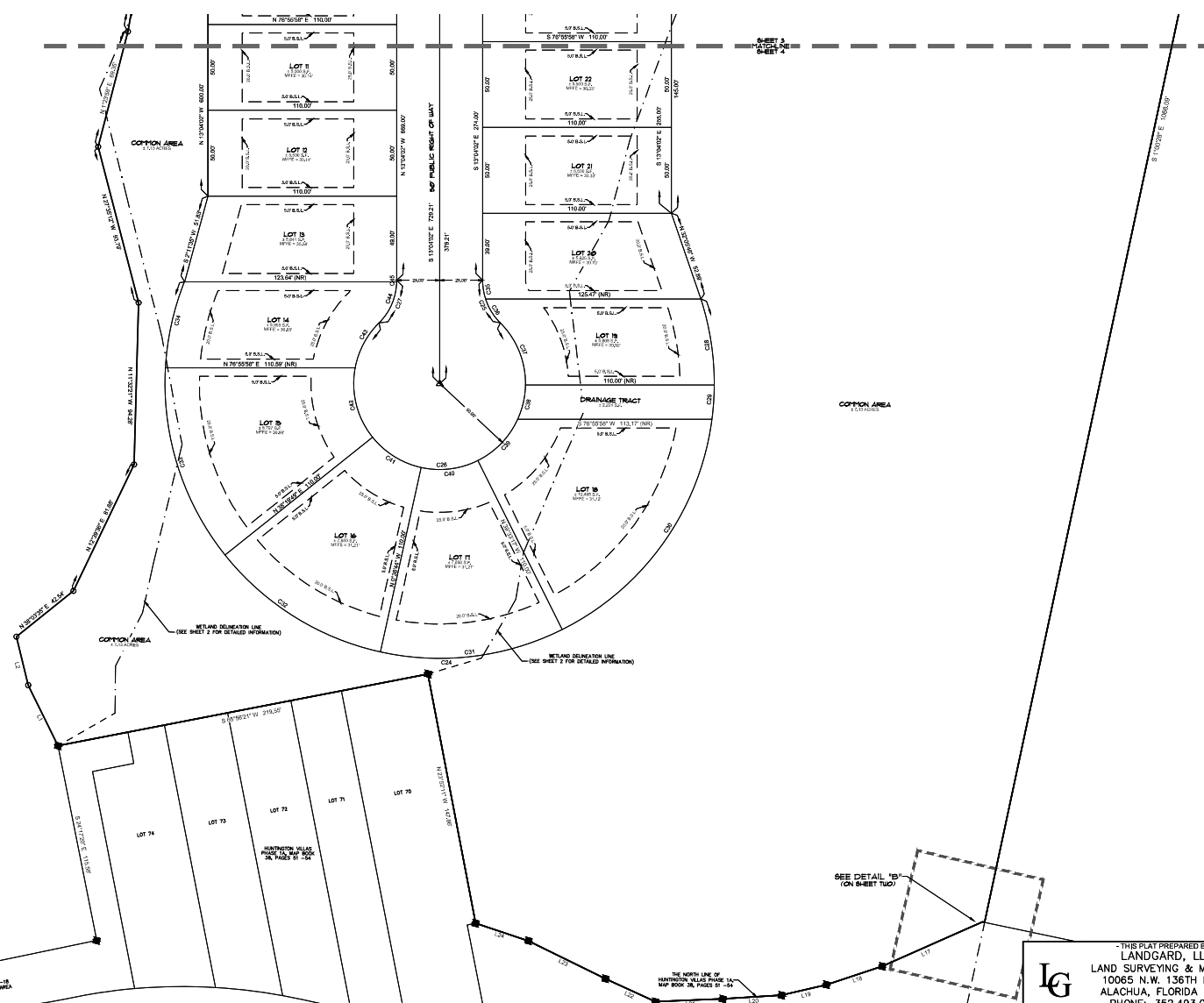
PLAT OF AMBERWOODS

A PORTION OF SECTION 22, TOWNSHIP 14 SOUTH, RANGE 31 EAST
FLAGER COUNTY, FLORIDA



LINE TABLE		
LINE #	DIRECTION	LENGTH
L1	N 1° 17' 42" W	34.36
L2	N 89° 30' 00" W	28.27
L3	S 89° 30' 00" W	42.88
L10	S 1° 17' 42" W	34.37
L11	S 89° 31' 30" W	28.42
L12	S 77° 52' 42" W	24.78
L13	S 77° 52' 42" W	30.33
L14	N 77° 50' 00" W	34.02
L15	N 1° 17' 42" W	34.36
L24	N 89° 41' 30" W	33.85

CURVE TABLE						
CURVE #	LENGTH	RADIUS	DELTA	TANGENT	CHORD BEARING	CHORD DISTANCE
C1	84.57	106.62	273.00	34.52	N 79° 57' 52" E	84.42
C2	85.74	114.47	202.00	33.02	N 81° 56' 58" W	84.29
C3	102.22	139.21	139.21	90.00	N 87° 04' 18" W	102.00
C4	433.22	186.32	219.784	444.22	N 10° 58' 30" E	307.299
C5	17.00	30.00	30.000	14.00	S 89° 59' 11" E	28.487
C6	220.73	30.00	291.164	448.2	N 70° 53' 08" E	79.49
C7	27.57	30.00	30.9357	14.02	N 89° 28' 18" E	28.44
C8	34.91	186.32	307.110	20.60	N 1° 17' 42" W	34.90
C9	30.36	186.32	179.82	10.80	N 89° 12' 34" W	30.36
C10	138.21	186.32	870.841	85.17	N 2° 22' 18" E	138.20
C11	102.00	186.32	379.462	90.00	N 88° 04' 18" E	102.00
C12	102.22	186.32	379.472	90.01	S 77° 52' 42" W	102.22
C13	117.21	186.32	419.681	91.20	S 59° 42' 02" E	114.42
C14	14.40	186.32	102.910	2.94	S 87° 52' E	14.40
C15	15.21	30.00	30.7852	6.60	S 79° 57' 52" E	15.21
C16	16.20	30.00	30.4751	6.20	S 84° 42' 22" E	16.20
C17	45.10	30.00	45.0712	31.27	N 33° 03' 00" W	38.26
C18	20.61	30.00	20.7992	14.61	N 77° 50' 00" W	20.61
C19	33.87	30.00	33.9531	17.80	N 30° 52' 21" E	30.22
C20	33.86	30.00	33.9472	17.80	N 69° 24' 58" E	30.22
C21	33.86	30.00	33.9472	17.80	S 77° 50' 00" E	30.22
C22	45.87	30.00	45.8159	30.97	S 77° 52' 42" E	41.84
C23	30.36	30.00	30.2980	15.30	S 14° 42' 18" W	28.42
C24	20.61	30.00	20.7778	13.80	N 87° 51' 18" E	20.61
C25	1.28	30.00	1.3102	0.68	N 12° 18' 18" W	1.28



- LEGEND:
- = SET 1/2" REBAR & CAP, LB. 8326
 - △ = SET NAIL & DISK, LB. 8326
 - = FOUND 3/4" CONCRETE MONUMENT MARKED "LB 7248"
 - = FOUND 1/2" REBAR & CAP MARKED "LB 7248"
 - = FOUND NATION GEODETIC SURVEY CONTROL POINT "79 90 GPS 4"
 - ▲ = FOUND NAIL & DISK (MARKED AS NOTED)
 - ⊕ = SEASONAL HIGH WATER MARK (GET BY OTHERS)
 - B.F.E. = BASE FLOOD ELEVATION
 - B.S.L. = BUILDING SETBACK LINE
 - U.F.E. = UNIFORM FRESH FLOOD ELEVATION
 - CON. = CONCRETE MONUMENT
 - FEMA = FEDERAL EMERGENCY MANAGEMENT AGENCY
 - F.I.M. = FLOOD INSURANCE RATE MAP
 - F.L.M. = FLOOD HAZARD ZONING MAP
 - IP = FOUND IRON PIPE
 - IR = FOUND IRON ROD
 - IND. = FOUND
 - D = IDENTIFICATION
 - S.A.D.A. = ITS SUCCESSORS AND/OR ASSIGNS
 - A.S.M. = AS SHOWN HEREIN MAY APPEAR
 - LI = LOCUS
 - NAVD = NORTH AMERICAN VERTICAL DATUM
 - O.S.B. = OFFICIAL SURVEY BOOK
 - PC = POINT OF CURVATURE
 - PT = POINT OF TANGENCY
 - PI = POINT OF INTERSECTION
 - P.O.C. = POINT OF BEGINNING
 - P.O.R. = POINT OF REVERSE
 - P.O.S. = POINT OF SIGHT
 - P.S. = PROFESSIONAL LAND SURVEYOR
 - PRM = PERMANENT REFERENCE MARKER
 - PSM = PROFESSIONAL SURVEYOR AND MAPPER
 - P.U.E. = PUBLIC UTILITIES EASEMENT
 - R/W = RIGHT OF WAY
 - S.F. = SQUARE FEET
 - S.P. = TAX PARCEL
 - ▲* = METALAND FLAG AND DESIGNATION NUMBER

- THIS PLAT PREPARED BY -
LANDGARD, LLC
LAND SURVEYING & MAPPING
10065 N.W. 136TH DRIVE
ALACHUA, FLORIDA 32015
PHONE: 352.493.0640
Licenses: Business No. 8326