

EMERGENCY

PREPAREDNESS GUIDE



READY, SET, PREPARE!

**BUILD
A KIT**

**MAKE
A PLAN**

**BE
INFORMED**

**GET
INVOLVED**

Dodge the Dunes

Helping protect our dunes is easier than you think!

The natural sand dunes that line the gorgeous shores along State Rd A1A are more than massive piles of wind blown sand. To make it easy, our dunes are essentially what is located on the east side (beachside) of A1A. Natural dunes play a much larger part in our lives than you may think, which is why we have to protect them. Our coastal lifestyle depends on natural dunes for a variety of reasons. They provide the first line of defense against ocean storms for our homes, restaurants and hotels, as well as inland and coastal ecosystems.



How You Can Help

1

Avoid driving and parking on grass and plants on the east side of A1A.

2

Only access the beach using approved stairs and access points.

3

Never disturb or harass sea turtles or nests they leave behind.

4

Don't forget to take trash with you when leaving the beach.

respect. restore. revive

Learn more by visiting dodgethedunes.com

MOSQUITO PREVENTION - TIPS

1

RAIN BARRELS

Secure Rain Barrels, empty or treat water to prevent mosquitoes, post storm.

2

CONTAINERS & TOYS

These should be secured inside if possible. Check post storm to ensure they are not holding water if left outside.

3

BOATS, CANOES & KAYAKS

Secure large objects that will hold water and turn vessels upside down if possible. Drain water post storm.

4

TARPS

Tarps used to cover pools or other areas around the home should be taut. Check for water pooling and drain.

5

GUTTERS

Gutters will hold debris and water. Check gutters pre and post storm to ensure water can freely travel through gutters.



To the residents, visitors & businesses of Flagler County . . .

We all want to keep our families, visitors, pets, homes, and businesses safe. When it comes to hurricanes, tropical storms, wildfires, thunderstorms, flooding, tornadoes, and other types of emergencies, the best way to accomplish that goal is to be prepared.

Your City and County governments have teamed up to produce this Emergency Preparedness Guide that provides information on what to do before, during, and after an emergency. We are committed to helping you prepare for and manage disasters.

We hope you will be our partner in preparing for local emergencies. Please study the information in this guide and act on the recommendations to Build an Emergency Supply Kit, Make a Plan, Be Informed, and Get Involved.

Remember, we are all in this together!

Build an Emergency Supply Kit and maintain it year-round. Consider building a smaller kit so that you may leave one at home and keep one with you if you have to leave your home.

Make A Plan in advance to ensure that your family is prepared at all times to shelter in place or evacuate should the need arise.

Be Informed of your risks. This includes knowing the potential hazards in our community, such as severe weather and wildfires. Take a minute to review the information in this guide and familiarize yourself with potential hurricane evacuation zones. Sign up for ALERTFlagler (page 25) to receive emergency notifications.

Get Involved in helping the community prepare and respond to disasters. Being prepared and able to take care of yourself and your family in an emergency or disaster will help you stay calm and organized.

INFORMATION PROVIDED WAS MADE POSSIBLE IN PARTNERSHIP WITH



TABLE OF CONTENTS

BUILD A KIT

- Build an Emergency Kit **pg. 4**
- Communication Plan **pg.5**



MAKE A PLAN

- Hazards in Flagler County **pg. 6-10**
- Plan Ahead - Don't Wait **pg. 11-13**
- Evacuation & Sheltering **pg. 14-15**
- Hurricane Evacuation Zone Map **pg. 16**
- Evacuation Facts **pg. 17**
- Property Preparedness **pg. 18-20**



BE INFORMED

- General Information **pg. 21-24**
- Important Alert Systems **pg. 25**



GET INVOLVED

- Volunteering **pg. 26**
- Important Contacts **pg. 27**

Designed in partnership by
Flagler County and City of Palm Coast
Photographs provided by residents of Flagler County



BUILD AN EMERGENCY KIT

These are recommendations for the average household and may differ for your household, consider your individual/family needs when making an emergency supply list.

WATER

- At least 1 gallon per person per day for five to seven days

FOOD

- At least enough for five to seven days per person
- Non-perishable packaged or canned food/juices
- Foods or special items for infants, the elderly or pets - also snacks
- Non-electric can opener, cooking tools/fuel
- Paper plates/plastic utensils

CLOTHING

- Seasonal/rain gear/sturdy shoes

BLANKETS/PILLOWS, ETC.

FIRST AID KIT/MEDICINES

PRESCRIPTION DRUGS

TOILETRIES & HYGIENE ITEMS

MOISTURE WIPES

FLASHLIGHT/BATTERIES

RADIO

- AM/FM and NOAA weather radio manually or battery-operated

CASH

- Banks and ATMs may not be open or available for extended periods

KEYS

TOYS, BOOKS & GAMES



IMPORTANT DOCUMENTS

- Keep documents inside a waterproof, and if possible fireproof container.
- Insurance, medical records, bank account numbers, Social Security cards and utility records
- Document all valuables and their condition with videotape or photos, if possible

TOOLS

- Keep a set with you during a storm

VEHICLE FUEL TANKS FILLED

PET CARE ITEMS

- Proper identification/immunization records, ample supply of food and water, bowls/feeders, carriers/cages, medications, muzzle, harnesses and leashes

COMMUNICATION PLAN (see page 5)

Communication Plan

HOUSEHOLD CHECK LIST

Think about your family and their specific needs and add additional items as necessary.

-
-
-
-
-
-
-
-
-
-

Emergency Contact Information

Designate a Local Contact

Name:

Phone:

Out-of-State Contact

Name:

Phone:

COMMUNICATIONS PLAN

Your family may not be together when an emergency strikes, so it's important to know how you'll reconnect if separated.

Household Information

Phone:

Address:

Family Members

Include Contact Information for each Member

.....

.....

.....

School, Childcare, Caregiver & Workplace

Include Emergency Contact Information for Providers

.....

.....

.....

Emergency Meeting Location

.....

HAZARDS IN FLAGLER COUNTY

Know Your Hazards

and what actions you need to take...



HURRICANES & TROPICAL STORMS

Action: Plan ahead, make a kit, stay informed, and be prepared to seek shelter as needed.
Photo: Hurricane Nicole 2022

TORNADOES

Action: During warnings move to a small interior space.
Photo: Starlight Tornado 2013

SEVERE THUNDERSTORMS

Action: Move indoors if you hear thunder.
Photo: Thunderstorm 2022

STORM SURGES

Action: Evacuate to a safer location and into a sturdy structure and plan ahead.
Photo: Hurricane Irma Storm Surge 2017



FLOODING

Action: Do not walk/drive through flooded roads.
Photo: Hurricane Ian Flooding 2022

WILDFIRES

Action: Stay alert and be prepared for immediate evacuation.
Photo: 2006 Wildfire

RIP CURRENTS

Action: Wave and yell, swim parallel to shore.
Photo: Flagler Beach 2023

EXTREME TEMPERATURES

Action: Take appropriate measures for the conditions forecasted.
Photo: 1989 Winter Storm

HAZARDS IN FLAGLER COUNTY



Hurricanes & Tropical Storms

Tropical Cyclones can bring flooding rains, storm surges, damaging winds, and tornadoes. Each storm is unique. If you went through a previous storm that seemed minor, the next one might be much more severe. Instead of focusing on the "cone of error" it is important to focus on the forecast, watches, and warnings and follow the directions issued by the emergency management team.

Tropical Winds

Hurricanes - Sustained winds greater than 74 mph

Tropical Storms - Sustained winds of 39 - 73 mph

Tropical Depressions - Winds less than 39 mph

The key to navigating hurricane season is to be prepared and understand your local risk. If you live in the potential hurricane evacuation zone (see page 16), potential lake flood zone (see page 16), or live in a mobile/manufactured home, you may have to evacuate. Consider your risk and comfort level if you live on high ground in a sturdy building. Hurricane preparedness includes having a plan, making a kit, and staying informed.

Tornadoes

Florida is the 3rd busiest state for tornadoes in the United States. Fortunately, most tornadoes in Florida are usually weaker but are still dangerous. Tornadoes can occur at anytime of the year with the more destructive tornadoes occurring in the winter and spring months.

There may be little time to seek shelter when a warning is issued. Know what to do ahead of time. The best shelter is a small interior room on the lowest floor of a sturdy building. If caught outside, a ditch may also work as a shelter. If caught in your vehicle & unable to escape the tornado, pull over, fasten your seatbelt, and lay low in the vehicle. Do not seek shelter under an overpass/bridge!

Did You Know?
Hurricane Season runs each year from
June through the end of November!



Don't Forget Your Emergency Kit

Hazards like these require an emergency supply kit.

Ensure you have a bag ready to go at a moments notice!



HAZARDS IN FLAGLER COUNTY

Severe Thunderstorms

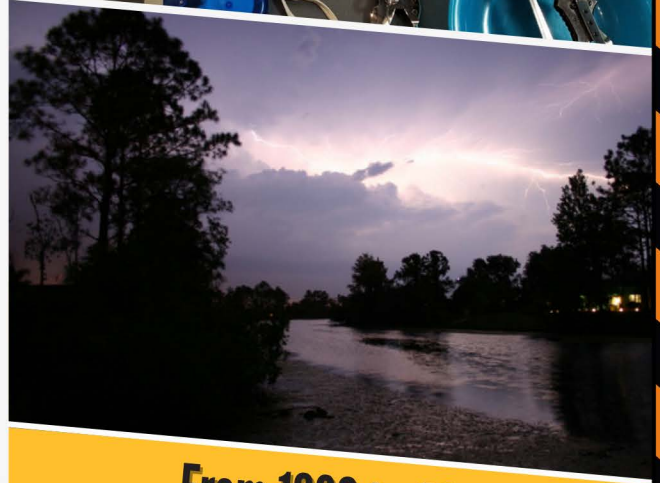
Despite being known as the "Sunshine State", Florida is frequently the state with the highest level of thunderstorm activity, making it a bustling hub for stormy weather. These storms create several hazards, including lightning which can strike some distance away from the thunderstorm.

Thunderstorms can produce gusty winds and torrential rainfall. Severe thunderstorms can produce damaging winds greater than 58 mph and/or large damaging hail.

Although severe thunderstorms are common during the summer, storms can occur any time throughout the year. It is important to stay indoors and, if possible, delay travel when under a Severe Thunderstorm Warning. If severe thunderstorms are expected during the day, take time to secure any loose outdoor items, seek shelter in a small interior room and stay away from windows as strong winds can occur suddenly.

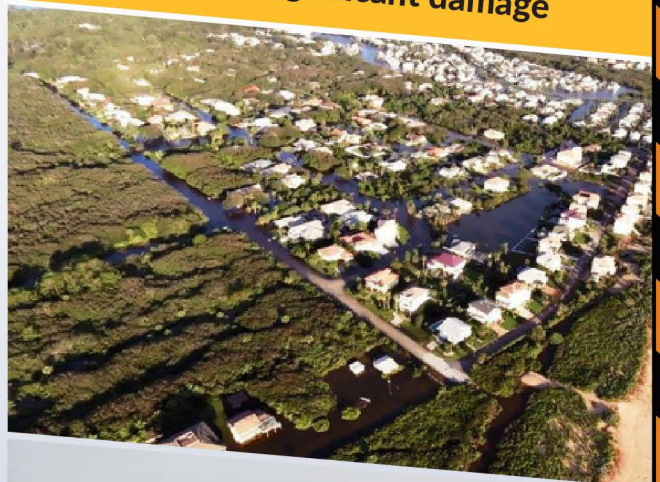
Did You Know this about Florida?

Florida isn't only known for its sunshine; it also has the highest cloud-to-ground lightning frequency in the United States.



From 1980 to 2022

Flagler County has experienced 15 Storm Surge events; of those, 9 caused significant damage



Storm Surges & Flooding

Storm surge is the sudden rise of water brought on by tropical storms, hurricanes, or other large storm systems that come from a body of water, such as the ocean, rivers, canals, or lakes; that can cause extensive and dangerous flooding. However, flooding can happen anywhere due to torrential rainfall, which may result in dangerous Flash Flooding.

Evacuation orders are issued when storm surges or severe flooding is expected. Please evacuate these areas before conditions become hazardous, as rescue may not be possible during extreme conditions. During periods of flooding, do not drive/walk through flooded roadways or allow children to play in flood waters. It is highly recommended to have flood insurance no matter where you live.



HAZARDS IN FLAGLER COUNTY

Wildfires

Flagler County has a history of destructive wildfires; fortunately, these are not frequent occurrences. It is essential to be prepared for a wildfire. Our wildfire season typically runs from winter to early summer. Wildfires can be erratic and unpredictable. There can be little time to react during a wildfire emergency. Have a plan ahead of time; such as where to meet in case your family gets separated.

Reduce your risk by having defensible space on your property. This involves removing flammable items near your home and using flame-resistant plants and materials.



CREATE A DEFENSIBLE SPACE AGAINST FIRE!

Rip Currents

Rip Currents cause more fatalities in Florida than all other disasters combined. Rip Currents are narrow channels of water that move away from the beach through a gap in the sandbar or along a jetty.



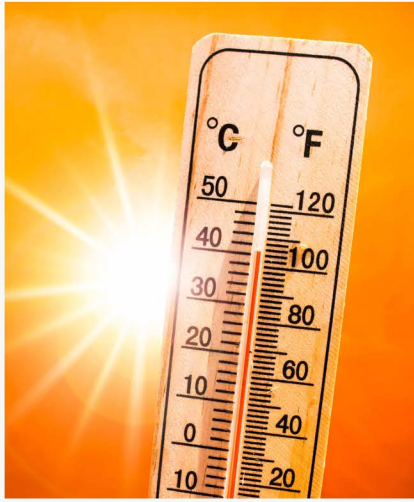
If Caught in a Rip Current:

- Relax, Rip Currents don't pull you under.
- Don't swim against the current.
- Swim out of the current, then to shore.
- If you can't escape, float or tread water.

Rip Currents are powerful currents of water moving away from shore. They can even sweep the strongest of swimmers away from shore. When possible, swim near a lifeguard.

Learn how to break the grip of the rip before going into the ocean. Ensure visitors from out of town fully understand how to escape rip currents. If caught in a Rip Current, swim parallel to the shore until free of the current, then swim to shore at an angle away from the current. If conditions look poor, do not go out into the ocean.

HAZARDS IN FLAGLER COUNTY



Extreme Temperatures

Flagler County can occasionally feel the effects of extreme temperatures. These can include heat waves, hard freezes, and even winter precipitation. During extreme heat periods, staying hydrated and limiting outdoor activities is critical. During periods of extreme cold, dress appropriately, be aware of the wind chill, and watch for fire hazards, such as space heaters and fireplaces.

Do you know the signs of Heat-Related Illness? Extremely high body temperature (above 103°F) taken orally. Red, hot and dry skin with no sweat, rapid, strong pulse, dizziness, confusion, or unconsciousness. If you suspect heat stroke, call 911. Cool down with whatever methods are available until medical help arrives. Do not give the person anything to drink.

Extreme Heat

HEAT ADVISORY: Issued when the heat index ranges between 108°F and 112°F for any duration of time

EXCESSIVE HEAT WARNING: Issued when the heat index reaches or exceeds 113°F for any duration of time

Preventing Heat-Related Illnesses



Hydrate by drinking water or sports drinks.



Offer to help those with limited access to air-conditioning.



Stay in an air-conditioned area during peak heat hours.



Avoid unnecessary exertion.



Wear light, loose fitting clothing.






Stay out of the sun if you do not need to be in it.

Extreme Cold

FREEZE WARNING: Issued when temperatures are expected to drop below 32°F for at least two hours

HARD FREEZE WARNING: Issued when temperatures are expected to drop below 28°F for at least two hours

| | | |
|---|---|--|
| 5 P's of Cold Weather Preparedness | PROTECT PLANTS  | Cover cold-sensitive plants to protect them from dangerous temperatures. |
| | PROTECT PETS  | Bring outdoor pets inside or provide a warm shelter for them. |
| | PRACTICE FIRE SAFETY  | Use safe heating sources indoors. Do not use fuel-burning devices such as grills; they release deadly carbon monoxide. |
| | PROTECT PEOPLE  | Dress in warm layers and wear a hat and gloves when appropriate. |
| | PROTECT PIPES  | Cover pipes and allow outdoor faucets to slowly drip to prevent them from freezing and breaking. |

PLAN AHEAD - DON'T WAIT



Develop an Emergency Plan

When developing a plan, think about your risk and how you will react to various scenarios. What needs to be accomplished before the hazard, during the hazard and how will you get back to normal after the hazard?

Ask the following questions to better develop an Emergency Plan:

Do you have any known risks?

- Is your property prone to flooding?
- Do you require medical oxygen?
- Do you have young children?
- Do you have a special need or disability?
- Do you own pets/farm animals?
- Do you have access to a vehicle?



If evacuated, what will you do... where will you go?

- How will you leave your home, or workplace in an emergency?
 - Do you have a family meeting location?
 - Do you need help to evacuate?
 - Where will you go? Who will you stay with?
 - Do you have multiple routes to escape in case one is obstructed?



PLAN AHEAD - DON'T WAIT

Have a Communications Plan in Place

Developing a communication plan with your family is crucial to address emergencies that can occur at any time. Imagine the potential chaos of a large fire where you may get separated without any means to check on your family's well-being. Creating a well-thought-out plan can mitigate this risk and ensure effective communication. Identify reliable communication channels like designated meeting points and emergency contact numbers. Prepare for contingencies by having alternative contacts and utilizing public emergency systems. A comprehensive communication plan provides peace of mind and acts as a lifeline during crises, keeping your family connected and informed.

- List all contacts needed, i.e., workplace, childcare, doctors, and senior care facilities
- Have an out-of-state and out-of-county emergency contact (see page 5)
- Check-in with neighbors, friends, and relatives when it's safe to do so

Identify Ways to Secure Your Home and Business

Inside:

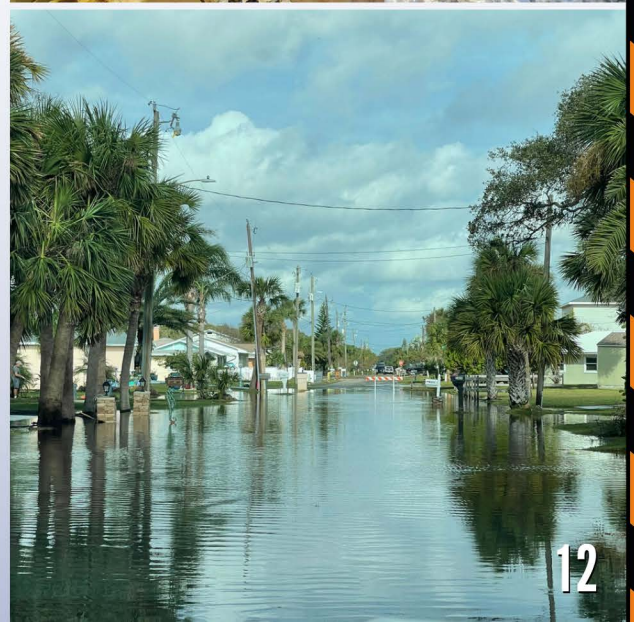
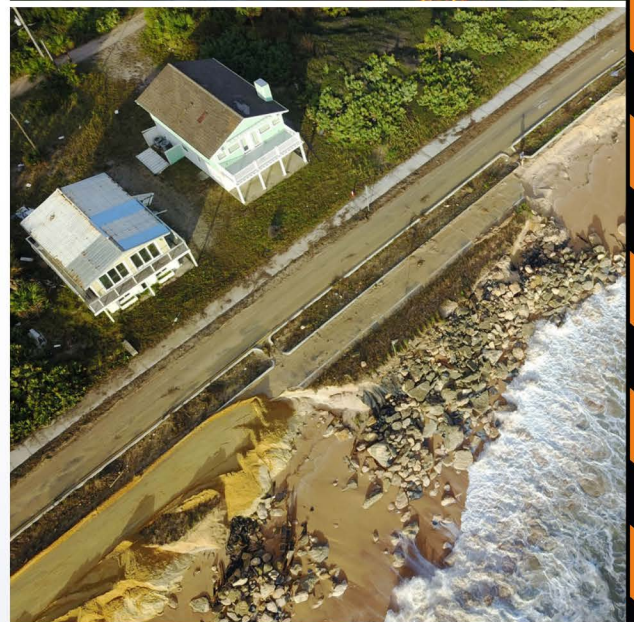
- Review your insurance policy
- Document your home/business contents
- Protect windows and glass doors with storm shutters
- Reinforce garage doors and double-entry doors

Outside:

- Redirect gutter outflow away from your foundation
- Fortify your roof
- Trim or remove dead, damaged, or rotting trees & limbs
- Secure objects outside the home
- Seal cracks and gaps
- Secure your manufactured home to the ground
- Secure fencing, porches, canopies and sheds
- Maintain proper water runoff and drainage
- Elevate utilities and service equipment
- Anchor fuel tanks

Utilize Available Resources to Stay Informed

- How will you know what is happening before, during and after a disaster?
 - Register for **ALERTFlagler** (see page 25)
 - Use a NOAA weather radio
 - Follow @FlaglerEOC on social media



PLAN AHEAD - DON'T WAIT

Should I Stay or Go?

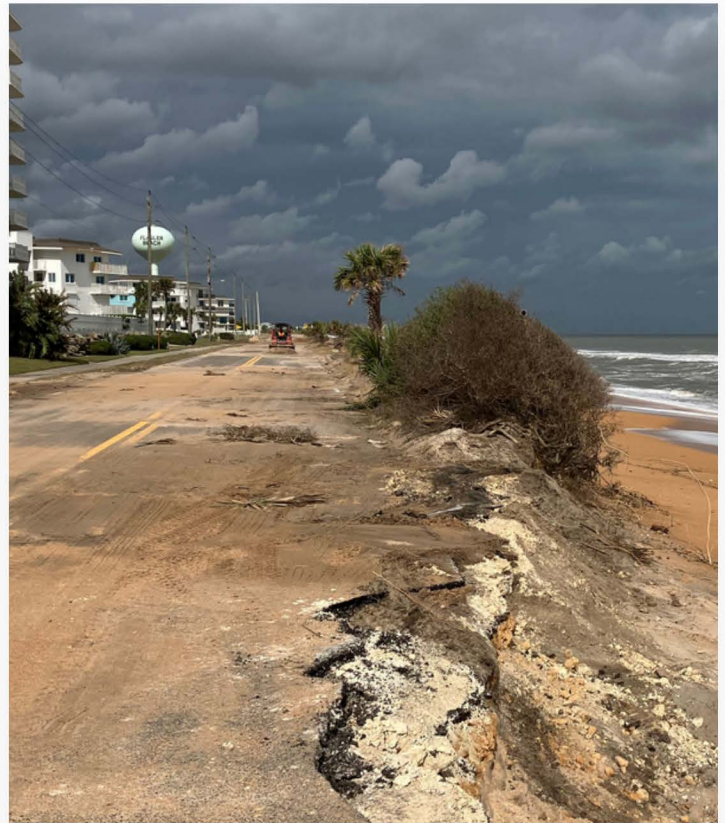
Don't wait until the last minute to ask yourself, "Should I Stay or Should I go?" Have a plan in place and know your options to keep your household safe.

Everyone in our community has the **potential** to be ordered to evacuate in an **emergency**. Residents and businesses should have a plan in place should they need to **evacuate**.

Here is what **you need to know**:

When an evacuation order is given, have a plan to evacuate. We recommend having a plan in place to evacuate to a friend or family members' home, or even staying in a hotel/motel. However, if that plan falls through, there will always be a public shelter option available.

To know if you are in a Potential Hurricane Evacuation Zone, visit www.Flaglercounty.gov/Emergency and select "Hurricane Evacuation Zones," or see page 16.



Shelly & Lucky say "Plan Now!"

Have a plan in place, in case you decide or need to evacuate.

- **Make sure your emergency supply kit has food your family loves to eat**
 - Snacks, water, fruits, and hearty non-perishable food items
 - Don't forget your manual can opener
- **Do you know your evacuation routes?**
 - Keep your vehicle's gas tank full

- **Where will you go if you can't stay home?**
 - Be sure to have multiple options
 - Identify friends or family and locate nearby hotels in a safe area

Who is your out-of-state and out-of-county point of contact?

- Make sure your family knows you are safe
- **Follow FlaglerEOC on Facebook, Twitter, and Instagram, and sign-up for ALERTFlagler (see page 25)**



EVACUATION & SHELTERING

During emergency situations, residents may need to seek shelter. There are several options for seeking shelter:

- Sheltering in Place
- Evacuate to Friends/Family or Hotel/Motel
- Public Evacuation Shelters

Sheltering in Place

There are various reasons one would shelter in place.

The first is the household does not want to evacuate, is safe and feels prepared to face the hazard in their own home.

The second is situation-dependent, such as a chemical spill. Local authorities may determine that it is safer to remain indoors than to go outside in order to evacuate.

If you plan to shelter in place:

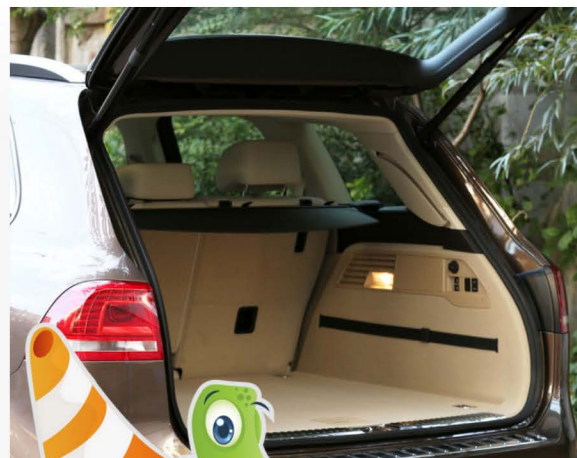
- Pay attention to local media outlets for official news and instructions as they become available
- Keep your emergency supply kit close (see page 4)
- Keep your devices fully charged
- Close all windows and doors
- Stay away from windows and doors, if possible go to an interior room with no windows
- Make sure your pets are inside with you
- Heed guidance from Emergency Management, Fire, EMS, and Law Enforcement as the situation may change

Evacuate

During certain situations, the County may issue evacuation orders for the safety of the general public and its responders. It is important to know that in Flagler County all evacuation orders are mandatory; however, in most situations you won't be forced from your home. It is important to understand that emergency responders may be unavailable if you choose to stay (see page 17).

If you plan to evacuate:

- Remember the phrases:
 - "Run from water, hide from wind"
 - Evacuate tens of miles, not hundreds of miles
- Make a plan to stay with family or friends
- Plan early, as lodging facilities may sell out quickly
- Refer to Page 17 for facts regarding evacuations



**DON'T
FORGET TO BRING...**



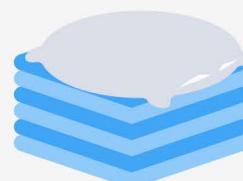
CANNED FOOD



RADIO



**DRINKING
WATER**



BEDDING



**FLASHLIGHT &
BATTERIES**



TOILETRIES



FIRST AID KIT & MEDICATION

EVACUATION & SHELTERING

Evacuation Shelters

Evacuation Shelters should be the last resort of your sheltering options. These shelters are more akin to a lifeboat than a cruise ship. If you do not feel safe/comfortable at home, cannot stay with family/friends, or cannot stay in a hotel, then an Evacuation Shelter may be your only option.

If you plan to go to an Evacuation Shelter:

- Bring some of your Emergency Supply Kit (see page 4)
 - Include bedding, sleeping bags, and pillows
 - Snacks and your favorite drink
 - Form of entertainment (non-battery operated)
 - Portable power bank
- Situation-dependent, you will be given a space 20x20 ft.
- Pet-friendly shelters will be designated upon initiation of evacuation orders
- If you have a pet, ensure you have the following items:
 - Food and water
 - Medications & Medical/Vaccination Records
 - Cage/crate
 - Comfort items
 - Leash/collar

Some Evacuation Shelters are categorized as Special Medical Needs Shelters. These Special Medical Needs Shelters provide limited medical care to individuals who require the services of a caregiver or a home healthcare provider every day due to medical conditions and/or disabilities. If you plan on going to a Special Medical Needs Shelter, a caregiver must go to the shelter and stay with you.

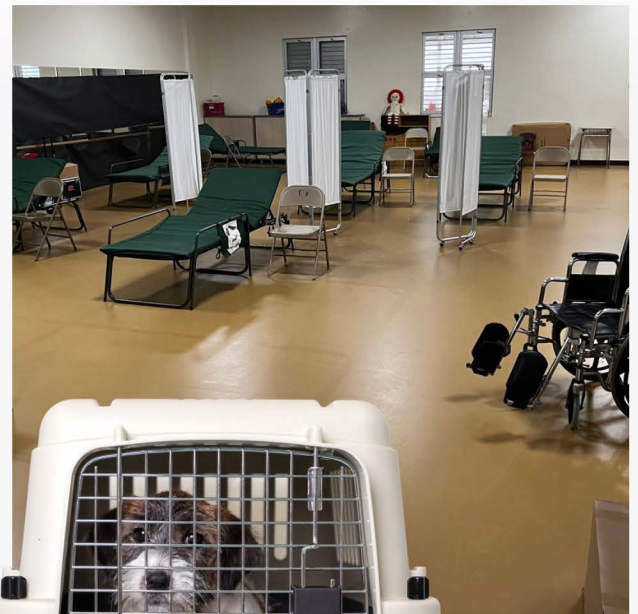
Pre-Registration is not required but highly encouraged. To register, visit FlaglerCounty.gov/emergency.

If you plan to go to a Special Medical Needs Shelter:

- Register for the Special Medical Needs Registry
- Bring your Emergency Supply Kit (see page 4)
 - Same as General Population Shelter
- Bring any medication and devices you require, as well as backup battery systems

If you need assistance getting to a shelter:

- Call us at 386-313-4200 to arrange transportation



Important Info for Pet Owners to Keep in Mind

- FL only recognizes dogs & miniature horses as service animals
- Shelter locations may vary as they are incident dependent
- Be sure to bring your pets' supplies



Scan the QR code below to register for the Special Needs Registry.



Click on the Special Needs button



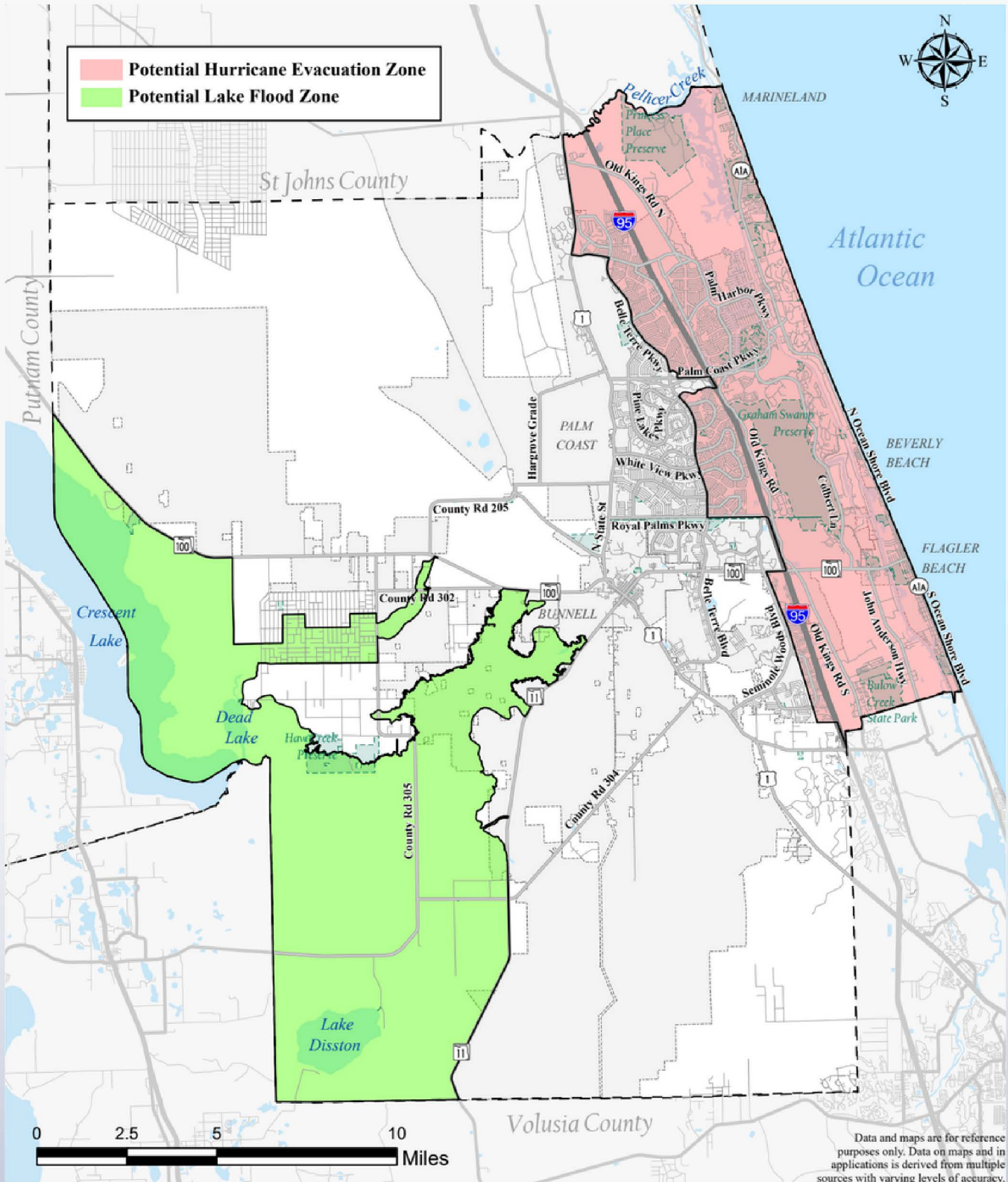
FlaglerCounty.gov/emergency

HURRICANE EVACUATION ZONE

This map shows the two areas that may be ordered to evacuate for a tropical storm or hurricane.

It is important to note that it is unlikely that an entire zone would be ordered to evacuate.

Evacuations will be ordered using common neighborhood names and descriptions within the zones.



For a more detailed map and to look up a specific address, please visit:

www.FlaglerCounty.gov/emergency
and then click on "Hurricane Evacuation Zones"

EVACUATION FACTS



If You're Evacuated,
Implement your plan! Stay with
friends, family, in a hotel, or even a
public shelter.



Do you live in a potential hurricane evacuation zone?

See the evacuation map on pg. 16 or visit FlaglerCounty.gov/Emergency and select "Hurricane Evacuation Zones". Here you will find an interactive map.

Evacuations can be issued for different types of emergencies. Some types of emergencies, such as chemical spills, wildfires, and flash flooding, can cause a no-notice evacuation order that may require you to leave your home/business immediately.

The purpose of an evacuation is to protect lives by removing residents, visitors, and workers from an area that is, or may be, impacted by a hazard when sheltering-in-place will not be effective. Evacuations can be ordered at any time.

Before an evacuation:

- Enroll in **ALERTFlagler** at FlaglerCounty.gov/emergency
- Follow @FlaglerEOC on Facebook, Twitter, and Instagram
- Regularly visit FlaglerCounty.gov/emergency for updates

During an evacuation:

- Evacuation Orders are mandatory (voluntary evacuations are not issued). Note: That while they are "mandatory," generally, we can't make you leave your home/property
- Individuals are expected to leave the area immediately upon issuance of the order
- As a general rule of thumb, mobile homes & low-lying areas are evacuated in advance of tropical-related impacts

How will you know where to go and in what direction?

- The evacuation instructions will advise of shelter options and roadway limitations
- Follow recommended evacuation routes, and be aware that shortcuts may be blocked

Bridges:

- Flagler County provides bridge safety updates via press release, social media, radio, and on our website at FlaglerCounty.gov/emergency

After evacuation:

- Check with local officials before returning
- Inform friends and family of departure and estimated arrival
- Fill up gas tank; use fuel apps for outages along route
- Prepare for disruptions in disaster-affected areas
- When returning to disaster-affected areas, expect disruptions and avoid going home until storm debris is cleared for safety

PROPERTY PREPAREDNESS

Property Preparedness

It's important to have a home and business preparedness plan. The best time to prepare is BEFORE an emergency. Make a plan and have a copy of your plan at home, at work, and in your car. Preparedness is all about protecting what you love and minimizing the impact so that you will hopefully never have to start from scratch. A great preparedness plan thinks about contingencies.

Here are a few simple ways to protect your property and your business

- Protect your windows and doors against wind-borne debris by installing a shutter system or attaching plywood
 - Do not use tape across your windows
- Evaluate your roof to make sure it can weather a storm
- Remove overhanging trees and branches that could fall and damage the structure
- Anchor and brace tall bookcases, filing cabinets, shelves, and racks to wall studs to keep them from falling
- Relocate valuable equipment and fragile items to safer locations
- Shut off your utilities (electricity, gas and water)
- Install a garage door brace to protect from high winds



Have Yard Debris?

Avoid placing it on the curb before a tropical storm to prevent branches from becoming hazardous projectiles in high winds. Plan ahead!

Pool Preparedness

- Never empty your pool; empty pools may experience serious structural problems
- If your pool is overflowing and posing a risk to your home, it is recommended you lower the water level only 6-12 inches into a grassy area
- All electric power should be turned off at the circuit breakers before a storm hits
- Pool water is a good source for washing & flushing should utility fail during or after the storm
- Waterproof pool furniture can be sunk in the pool, but do not put any metal or glass items into your pool

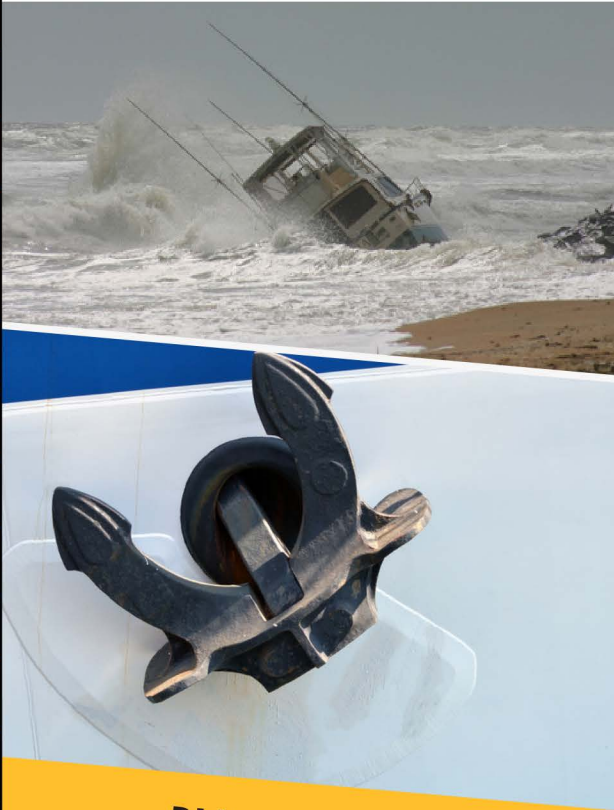


Don't Use Tape!

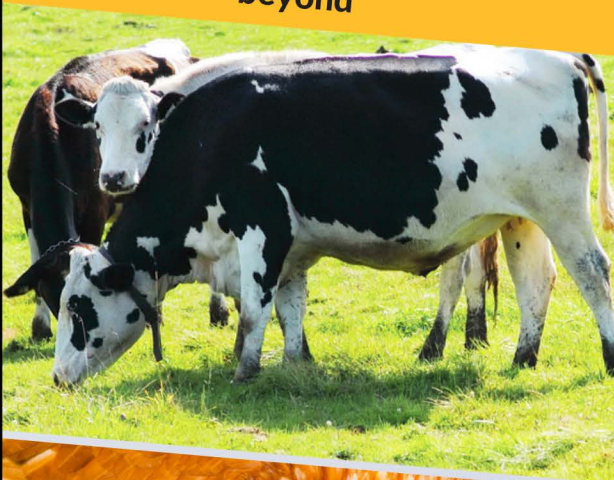
Tape can create larger, more dangerous glass fragments, increasing the risk of harm



PROPERTY PREPAREDNESS



Did you Know?
The Intracoastal Waterway connects
all the way up to Maryland and
beyond



Boat Owners

Do you have a boat? Having a weather preparedness plan tailored to your boat is vital. Familiarize yourself with the local environment and identify nearby safe-havens. When a storm approaches, swift action is necessary.

- Practice how to secure your boat in a marina or at a dock
- Check your lease or boat storage agreement
- Know your responsibilities and liabilities
- Have a photo of your boat and the Hull ID Number
- Know how to contact the harbor/dock master and Coast Guard
- Remove all objects that could become unsecured: canvas, sails, dinghies, radio, biminis, etc.
- Lash down everything you cannot remove: tillers, wheels, booms
- Remove the battery and portable fuel
- Make sure the electrical system is turned off
- DO NOT STAY aboard a vessel during a storm
- For more information, visit AICW.org/public_information

Livestock and Large Animals

Many areas within the County do not allow "livestock" or large animals. But if you happen to live in one of the areas where ownership is permitted, it's important to have an emergency plan in place for them. Make sure you prioritize the well-being and safety of all your animals during difficult times and take proactive steps to prepare for their care and protection.

- Ensure all animals have some form of identification
- Evacuate animals to a safer location whenever possible
- Map out primary and secondary routes in advance
- Ensure vehicles and trailers are available for transporting and supporting each type of animal. Also be sure to plan for needed handlers and drivers. **Note:** *It is best to allow animals a chance to become accustomed to vehicular travel so they are less frightened and easier to move.*
- Ensure destinations have food, water, veterinary care and handling equipment
- If evacuation is not possible, animal owners must decide where to move large animals to shelter or have them remain inside. For more information, visit:
 - FLSART.org
 - Disaster.IFAS.UFL.edu

PROPERTY PREPAREDNESS

Properties with PEP Tanks

It's important to know that if your property's utilities operate using a system called Pretreatment Effluent Pumping (PEP). The PEP System is part of the central sewage system in many areas of the City of Palm Coast.

Properties utilizing the PEP tank system are equipped with an underground tank, a small pump, and a control panel that is attached to the side of your home and reliant on your home's power. Your Utility Department manages and runs this system.

During a power outage, the pump in the PEP System won't work. However, the underground tank has enough capacity to handle a typical day's water usage before you might experience any issues.

To deal with a prolonged power outage, it is important to conserve water. For example, limit the length of your showers, consider washing dishes outside or using disposable plates and utensils, and only flush the toilet when necessary. By following these water conservation practices, you can manage your resources effectively and make the most of the available capacity during power disruptions.

Stormwater Drainage System

Stormwater Drainage Systems are designed to protect homes and businesses from flooding. This includes canals, swales, pipes, ditches, water control structures, and stormwater storage areas that all work together to handle the heavy rainfall we receive in this area.

Do you have a swale on your property? Swales are designed to collect water from roads and properties and direct it into ditches and canals and/or allow the water to soak into the ground and replenish the underground water sources. It is the property owners responsibility to maintain swales free of debris build up.

During heavy rain, you may notice your swale filling up with water. Don't worry! This means that the water isn't entering your home and causing flooding. It may take a few days for the water to soak into the ground completely. If your home does get flooded, make sure to report it to your flood insurance provider for assistance.



**NEVER FLUSH THE FOLLOWING:
THEY WILL HARM YOUR SEPTIC SYSTEM.**



SANITARY NAPKINS



PLASTIC OF ANY KIND



FLUSHABLE WIPES



CONTRACEPTIVES



DIAPERS



CIGARETTES



OIL/GREASE



COFFEE GROUNDS



During a Power Outage:
If it's yellow, let it mellow;
If it's brown, flush it down!

GENERAL INFORMATION



Generator Power Supply

After a disaster strikes and leaves a home without power, generators can be invaluable tools for providing electricity and restoring a sense of normalcy. Generators are portable devices that convert fuel, such as gasoline or propane, into electrical energy. They can be used to power essential appliances and devices like refrigerators, lights, communication devices, and medical equipment.

In a post-disaster situation, generators can offer a lifeline, providing temporary power until the grid is restored. However, it is important to use generators safely, ensuring proper ventilation and avoiding carbon monoxide poisoning. Additionally, generators should be used judiciously to conserve fuel and minimize noise pollution.

REMEMBER THESE GUIDELINES FOR SAFE USE WHILE OPERATING A POWER GENERATOR AT YOUR HOME OR BUSINESS:



- Don't use a power generator on balconies, decks or porches.
- Don't use a power generator near windows or homes.
- Generators should never be used inside a living space.
- Generators cannot be used inside garages or basements.



- Always ensure there is a minimum of 20 feet space between homes and a power generator when in use.

GENERAL INFORMATION

Waste Collection After the Storm

Sorting through and picking up the debris after a storm has passed is vital for rapid community clean-up. Following these specific guidelines will make for a speedier removal process. Pay attention to local media and our website for any changes regarding waste collection.

Group like items together in convenient piles along residential curbsides for collection:

Household Garbage

- Bagged/binning trash
- Placed outside the night before collection date
- Recycling placed in bins and labeled appropriately

White Goods

- Refrigerators, freezers
- Washers, dryers
- Air conditioners
- Stoves, dishwashers
- Gasoline

Hazardous Waste

- Oil
- Batteries
- Pesticides
- Paints
- Gasoline

Use of Sandbags

As part of emergency preparations, sandbags may be distributed to the public, when not readily available in local stores, to help protect homes. Local officials will provide information on the designated locations and quantities of sandbags available. It is important to be aware that most sandbag stations operate on a self-serve basis, so residents should plan ahead and make arrangements for assistance or transportation, if required.

Sandbags are a simple, and sometimes effective solution to protect your home or business from minor flooding by diverting water flow away from your property.

Stacking - A waterproof barrier, such as a tarp, should be placed under and behind the stacked bags. Bags should be stacked no more than three layers high, unless placed in a pyramid (width 3x the height) or up against a structure.

Disposal - It is recommended that clean bags always be kept for a future flood event. It is your responsibility to dispose of unwanted sandbags properly.

DO NOT put filled sandbags in your garbage or at the curb for disposal.

Untampered bags - If sandbags are clean but breaking down, empty the sand into your yard and dispose of the empty bag in your regular trash.

Contaminated bags - If your bag shows signs of contamination (oil, chemicals, sewage, etc.), please contact Flagler County Emergency Management at 386-313-4200 or email EOC@FlaglerCounty.gov.



Waste Collection Post-Storm

After a disaster, debris haulers will only focus on storm debris. This is not the time to trim your bushes and trees.

GENERAL INFORMATION



If your home is damaged

It is crucial to prioritize safety and take necessary precautions. Here are some important guidelines to follow:

- Make repairs safely, using appropriate tools and precautions to prevent accidents
- Secure a tarp on your damaged roof to avoid water entering your home
- Board up compromised windows and doors to protect against further damage and intrusions
- Safely clear debris to eliminate hazards and obstructions
- Separate debris into categories (building vs. organic) for easier disposal and recycling (see page 22)
- Remove standing water or excess moisture indoors to prevent mold growth and further damage
- Stay updated through local media and our website for valuable resources, assistance programs, and support

Who do you Contact First?

If you experience any damage to your home, including flooding, once it is safe, be sure to contact your insurance provider.



Do You Have Flood Insurance?

Homeowner's insurance typically does not cover floods. If you do not have separate flood insurance, contact your insurance agent or go to [FloodSmart.gov/flood-insurance](https://www.floodsmart.gov/flood-insurance) to find an insurer. Much of the time there is a 30-day waiting period after a flood policy is purchased before coverage goes into effect. Federal government backed flood insurance is available to almost everyone, even if the property has never flooded or is not in a flood prone area. You may also want to include the contents of your house on a flood insurance policy. Renters are also eligible to purchase a flood insurance policy for their belongings.

Flood Insurance Rate Maps (FIRMs) and flood protection references are available at the Flagler County Public Library in Palm Coast, Flagler Beach City Hall, and Palm Coast City Hall.

GENERAL INFORMATION

Reduce Flood Damage - Mitigate Your Home

One way to minimize flood risk is to make sure your property is graded to drain away from your house/business and toward an existing drainage way (i.e., front yard swale).

Contact your City or the County Building Department before altering, re-grading, filling, or building on your property. A permit is needed to ensure projects do not cause flooding problems on your property or anyone else's property. If needed, seek assistance from a licensed contractor.

You can also make your walls water-resistant and place water-tight closures under the doorways. This method may not work when flooding is expected to reach more than 2 feet high.

Another approach is to modify the structure and relocate the contents so there is little or no damage when floodwaters enter.

Help maintain the drainage system by refraining from dumping objects into ditches, swales, or canals as it violates local ordinances.

CRS - Community Rating System

The National Flood Insurance Program's (NFIP) Community Rating System (CRS) is a voluntary incentive program that recognizes and encourages communities to exceed the minimum NFIP requirements. The CRS has three main goals:

1. Reduce flood damage to insurable property
2. Strengthen and support the insurance aspects of the NFIP
3. Encourage a comprehensive approach to floodplain management

Homeowners who live in areas known as Special Flood Hazard Areas, in communities enrolled in the CRS receive discounts on their flood insurance premium rates. Communities receive a score based on the number of floodplain management activities completed, and the scoring translates into discounts. Savings on flood insurance premiums in these areas range from 5% to 30%. Unfortunately, CRS does not offer discounts outside of the Special Flood Hazard Area since the rates for these zones already reflect significant premium reductions.

Questions about Flood Maps, NFIP, and CRS

Contact Emergency Management at 386-313-4200 and we will connect you with the appropriate agency.




Informational websites about Flood Maps, NFIP, and CRS

FlaglerCounty.gov, PalmCoast.gov, CityofFlaglerBeach.com, FEMA.gov and Floodsmart.gov.



IMPORTANT ALERT SYSTEMS

It is important to be aware of the multiple ways Flagler County sends emergency warnings and alerts, including severe weather in our community.

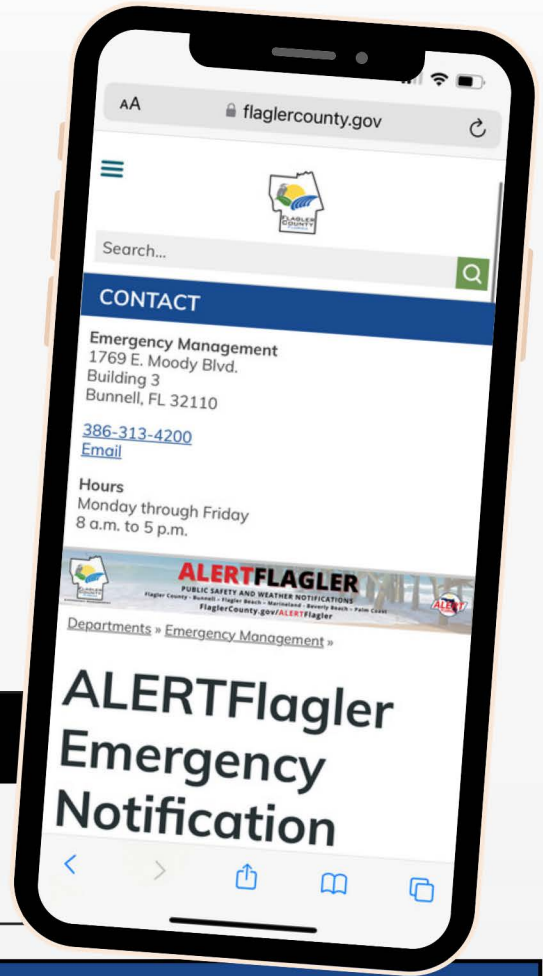



 Stay connected to us on social media
 follow @FlaglerEOC

Flagler County utilizes **ALERT**Flagler to notify residents about emergencies like evacuation orders and tornado warnings.

ALERTFlagler is a no-cost, countywide subscription service that allows you to receive selected emergency notifications based on the address(es) you enroll. This service allows you to customize your notifications and choose delivery methods, including phone calls, email, and SMS/text messages.



Learn more at
FlaglerCounty.gov/ALERTFlagler or
 call 386-313-4200



| WATCH | vs | WARNING |
|--|----|---|
| Issued when hazardous weather conditions are possible for a given area | | Issued when hazardous weather has been spotted, detected or is imminent |

| WIRELESS EMERGENCY ALERTS (WEA) | ALERTFLAGLER |
|---|--|
| Authorized government agencies can send short text-like alerts directly to your phone based on your current location. These alerts happen automatically and do not require you to sign up. Check your phone's setting to ensure that you have these alerts enabled. Learn more by visiting FlaglerCounty.gov/ALERTFlagler | ALERT Flagler is a free emergency notification system for all of Flagler County. This system provides time-sensitive information for local and county-wide emergencies, including severe weather warnings from the National Weather Service. Register for an account today by visiting FlaglerCounty.gov/ALERTFlagler |
| EMERGENCY ALERT SYSTEM (EAS) | |
| EAS is a no-cost national public warning system that requires broadcasters, cable television systems, and satellite/radio TV services providers to deliver emergency information from county, state & federal authorities. These alerts come across your radio or TV, preceded by a tone and may be audible and/or displayed on the screen. Learn more at FlaglerCounty.gov/ALERTFlagler | |

VOLUNTEERING

Get Involved:

Take free Community Emergency Response Team (CERT) training. This training prepares attendees for emergencies in our community. You will learn to respond and aid victims while waiting for professional help. The program covers subjects like fire safety, critical decision-making, basic first aid, and search & rescue. Details at www.FlaglerCounty.gov/Emergency.

Volunteer Opportunities:

- Volunteer at the EOC: Assist with calls, supplies, outreach, and data entry. Commit 4+ hours weekly between 8 a.m. and 5 p.m.
 - Information at www.FlaglerCounty.gov/Emergency
- Be a storm spotter: Learn to identify dangerous weather for early warnings. Attend Skywarn classes hosted by Emergency Management and the National Weather Service
 - Information at www.FlaglerCounty.gov/Emergency
- Engage in local governance: Attend council/commission meetings, join committees, and register for Citizens' Academies. Contact your local governments for the latest opportunities



Additional Community Resources & Messaging:

Residents are encouraged to actively utilize the resources offered by the county and municipalities to stay informed and up to date with the most current information available.

Palm Coast Connect provides a convenient platform for residents to report, track, and resolve cases. This free customer service portal makes it easy to submit concerns and request services from the City of Palm Coast. Create an account online at PalmCoast.gov/Connect. During active emergencies, the city website operates in "emergency mode," sharing storm-related news and important announcements on the homepage, PalmCoast.gov.

The City of Bunnell utilizes its website and utility billing system to send important notifications, including storm-related information, emergency operations updates, boil water notices, city events, and more. Stay informed by subscribing to receive notifications at www.BunnellCity.us and also ensure that your utility contact information is up to date.

Residents of Flagler Beach can sign up to receive essential emails and/or text notifications from the City of Flagler Beach on various topics, such as Commission Agendas & Minutes and Special Events. Visit the "Notify Me" page on the Flagler Beach website at CityOfFlaglerBeach.com to subscribe for important notifications.

For residents of Beverly Beach and Marineland, please refer to MyBeverlyBeach.org and TownOfMarineland.org for information specific to these areas.

IMPORTANT INFORMATION

EMERGENCY 911

(Call 911 ONLY to report an emergency)

OFFICIAL EMERGENCY PUBLIC INFORMATION



Emergency Management
FlaglerCounty.gov/Emergency
386-313-4200

   @FlaglerEOC

Emergency Radio Partner (WNZF)
1550 AM & 94.9 FM
www.FlaglerBroadcasting.com

OTHER IMPORTANT CONTACTS

AdventHealth Palm Coast Hospital
386-586-2000

AdventHealth Palm Coast Parkway
386-302-1800

Poison Control
800-222-1222

Florida Power and Light
800-4-OUTAGE

National Weather Service
Weather.gov/jax

Federal Emergency Management Agency
800-621-FEMA (3362) or FEMA.gov

COMMUNITY CONTACT INFORMATION



Flagler County Government
1769 East Moody Blvd., Bldg. #2,
Bunnell, FL 32110
FlaglerCounty.gov 386-313-4000

     @FlaglerCounty



City of Palm Coast
160 Lake Ave. Palm Coast, FL 32164
PalmCoast.gov 386-986-2360

     @PalmCoastGov



City of Bunnell
604 E. Moody Blvd. Bunnell, FL 32110
BunnellCity.us 386-437-7500

 @BunnellFL



City of Flagler Beach
105 S. Second St. PO Box 70
Flagler Beach, FL 32136
CityofFlaglerBeach.com
386-517-2000

  @FlaglerBeachPolice



Town of Beverly Beach
2735 N. Oceanshore Blvd.
Beverly Beach, FL 32164
MyBeverlyBeach.org 386-439-6888



Town of Marineland
176 Marina Dr
Marineland, FL 32080
TownofMarineland.org
386-232-8060



Department of Health
301 Doctor Carter Blvd.
Bunnell, FL 32110
Flagler.FloridaHealth.gov
386-437-7350



Flagler County Sheriff's Office
61 Sheriff EW Johnston Drive
Bunnell, FL 32110
FlaglerSheriff.com
Non-emergency (386) 313-4911

   @Flaglersheriff