

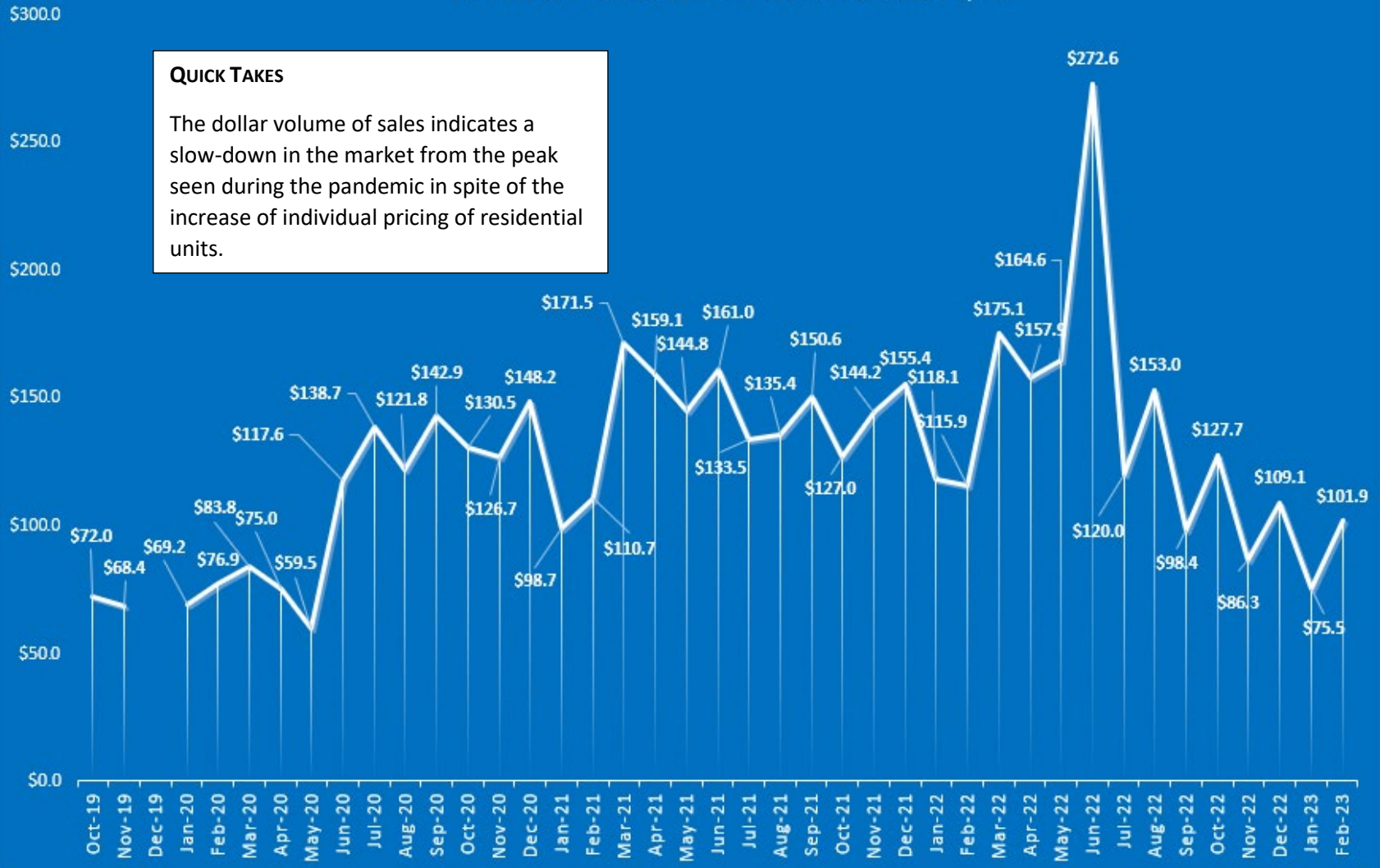
RESIDENTIAL SALES | DOLLAR VOLUME IN MILLIONS

SINGLE FAMILY, TOWN HOME/CONDO & MANUFACTURED SALES COMBINED

DATA SOURCE: FLAGLER COUNTY ASSOCIATION OF REALTORS, INC

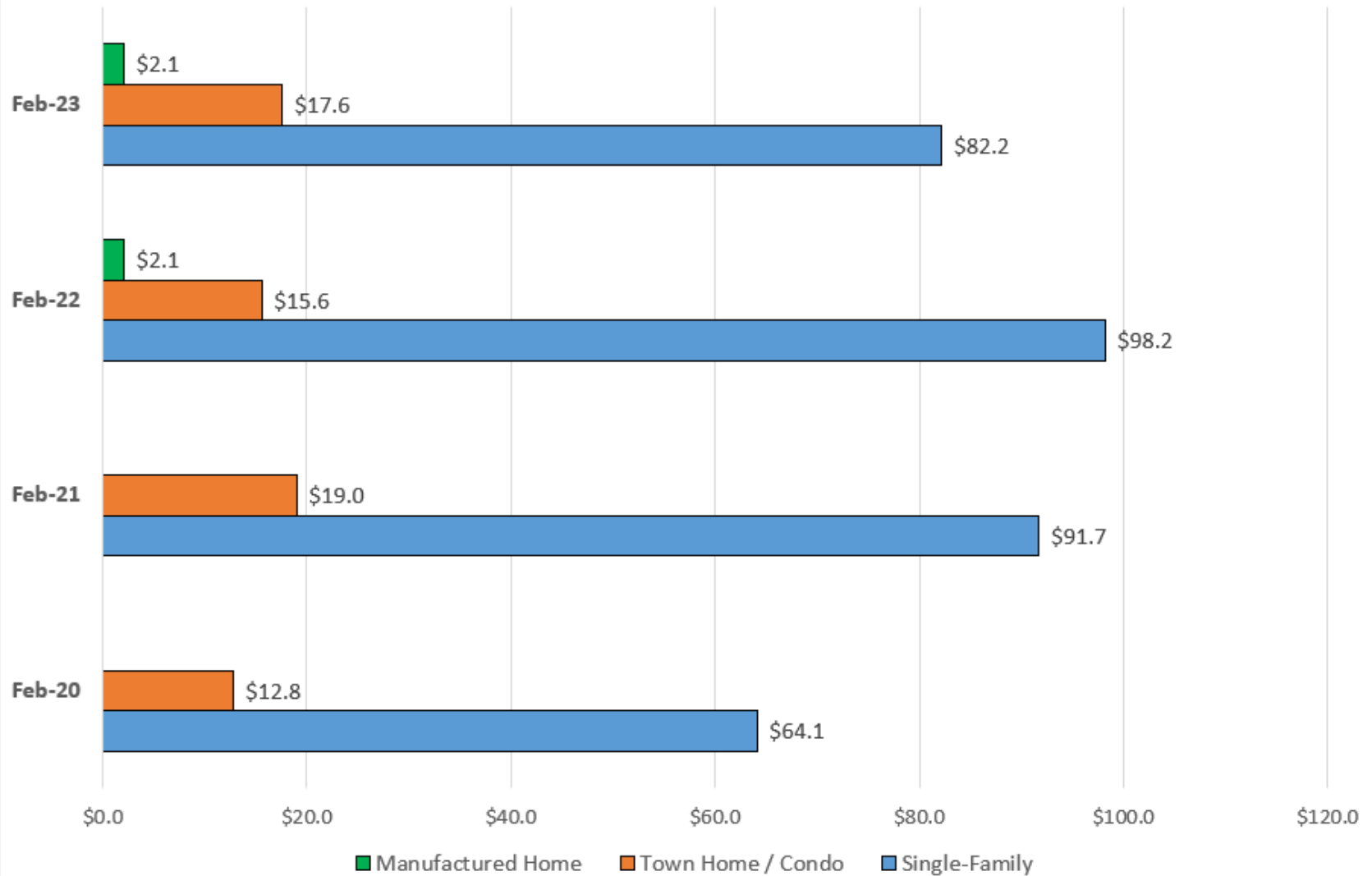
QUICK TAKES

The dollar volume of sales indicates a slow-down in the market from the peak seen during the pandemic in spite of the increase of individual pricing of residential units.



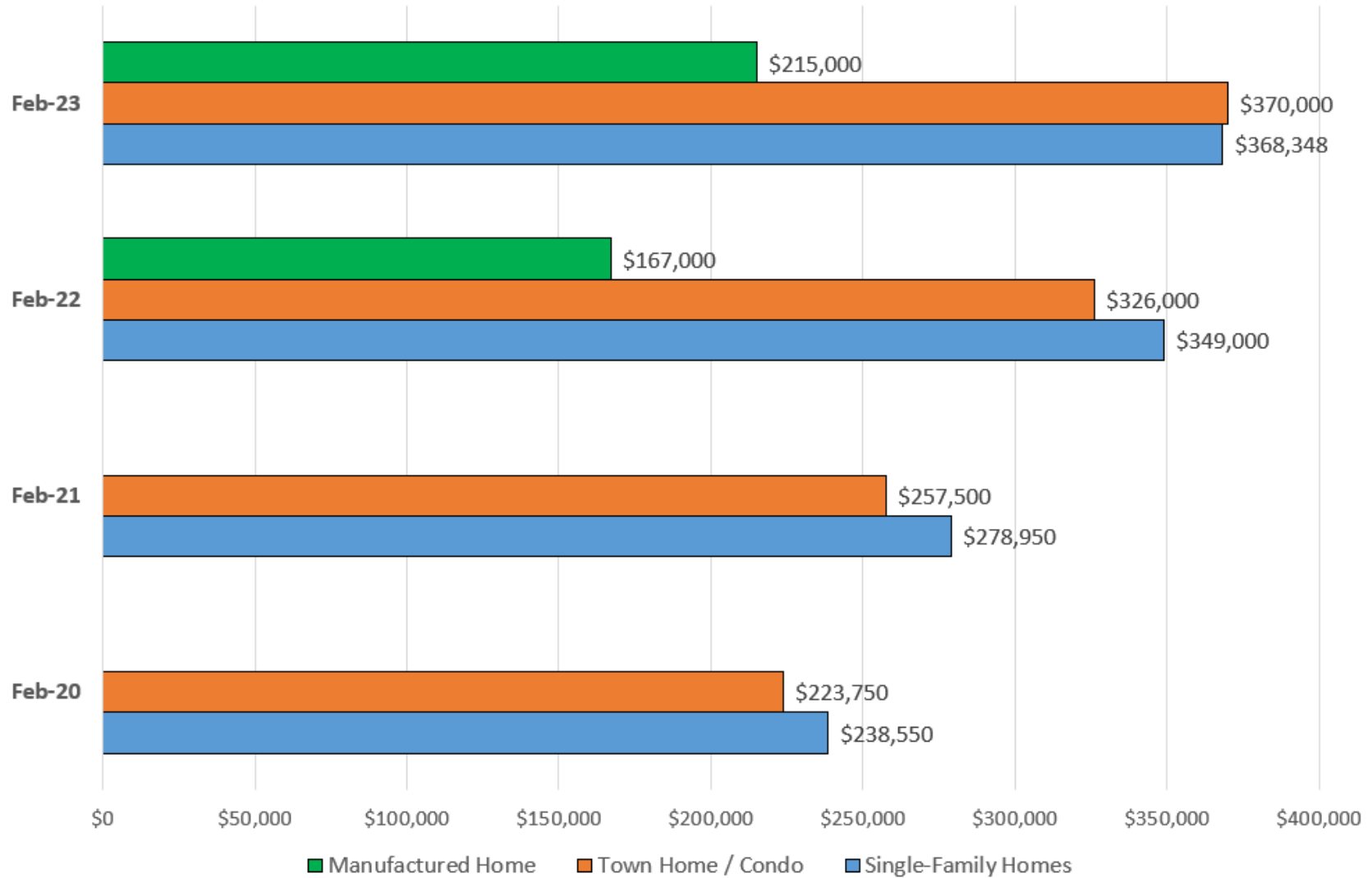
RESIDENTIAL REAL ESTATE SALES: VOLUME IN MILLIONS

Data Source: Flagler County Association of Realtors, Inc



RESIDENTIAL REAL ESTATE: MEDIAN SALE PRICE

Data Source: Flagler County Association of Realtors, Inc.

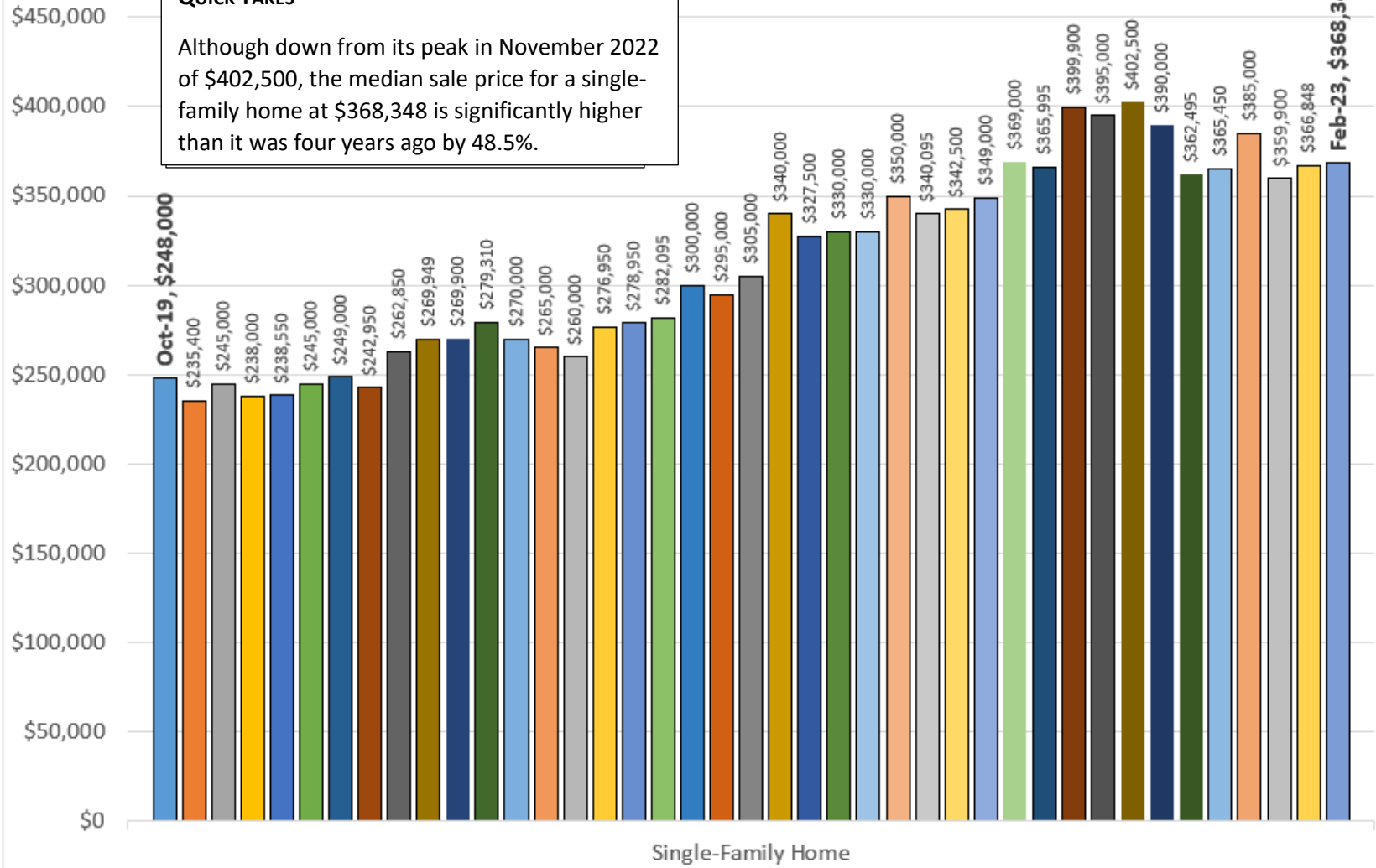


FLAGLER COUNTY | SINGLE FAMILY MEDIAN SALE PRICE

DATA SOURCE: Flagler County Association of Realtors, Inc

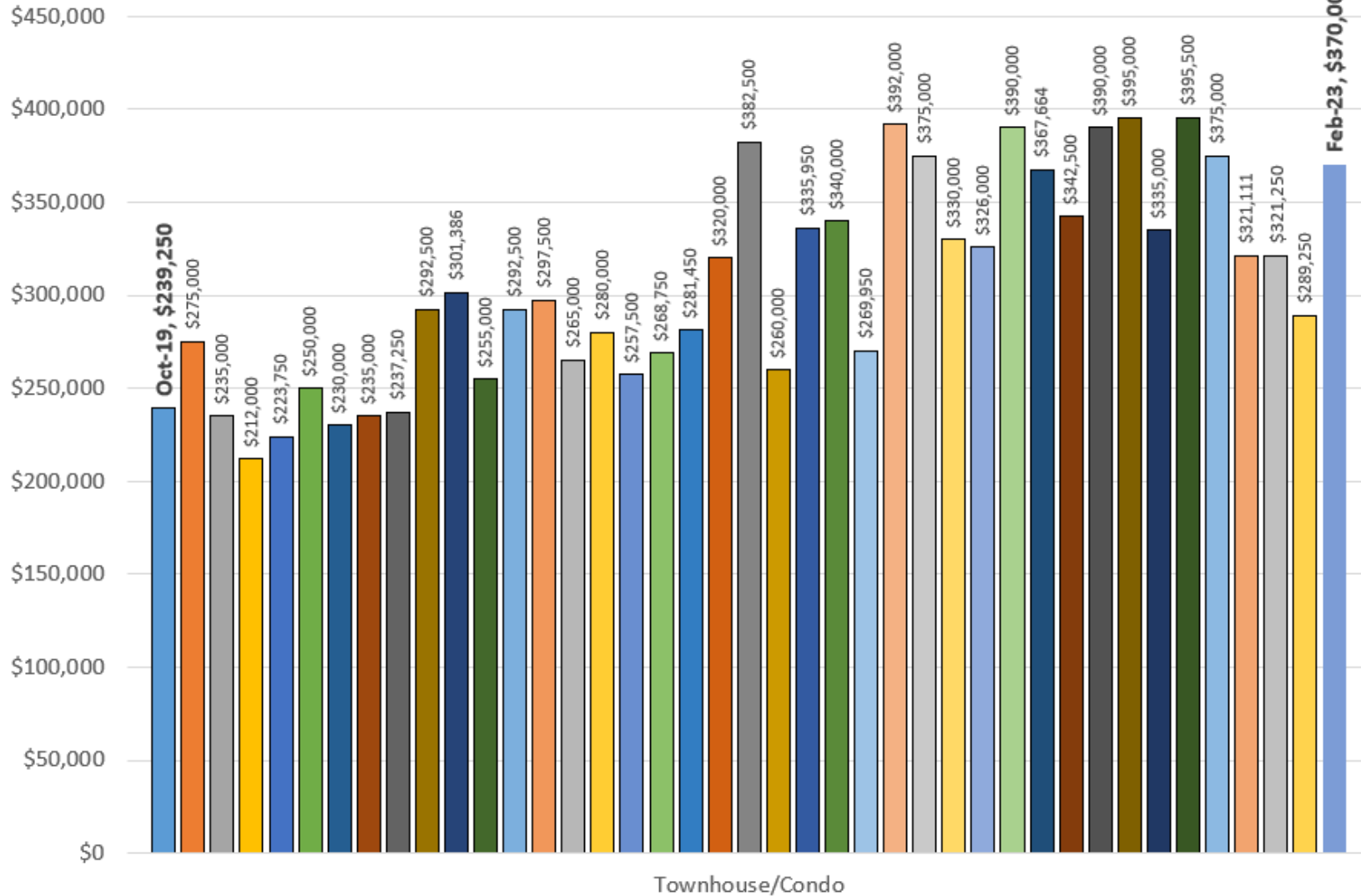
QUICK TAKES

Although down from its peak in November 2022 of \$402,500, the median sale price for a single-family home at \$368,348 is significantly higher than it was four years ago by 48.5%.



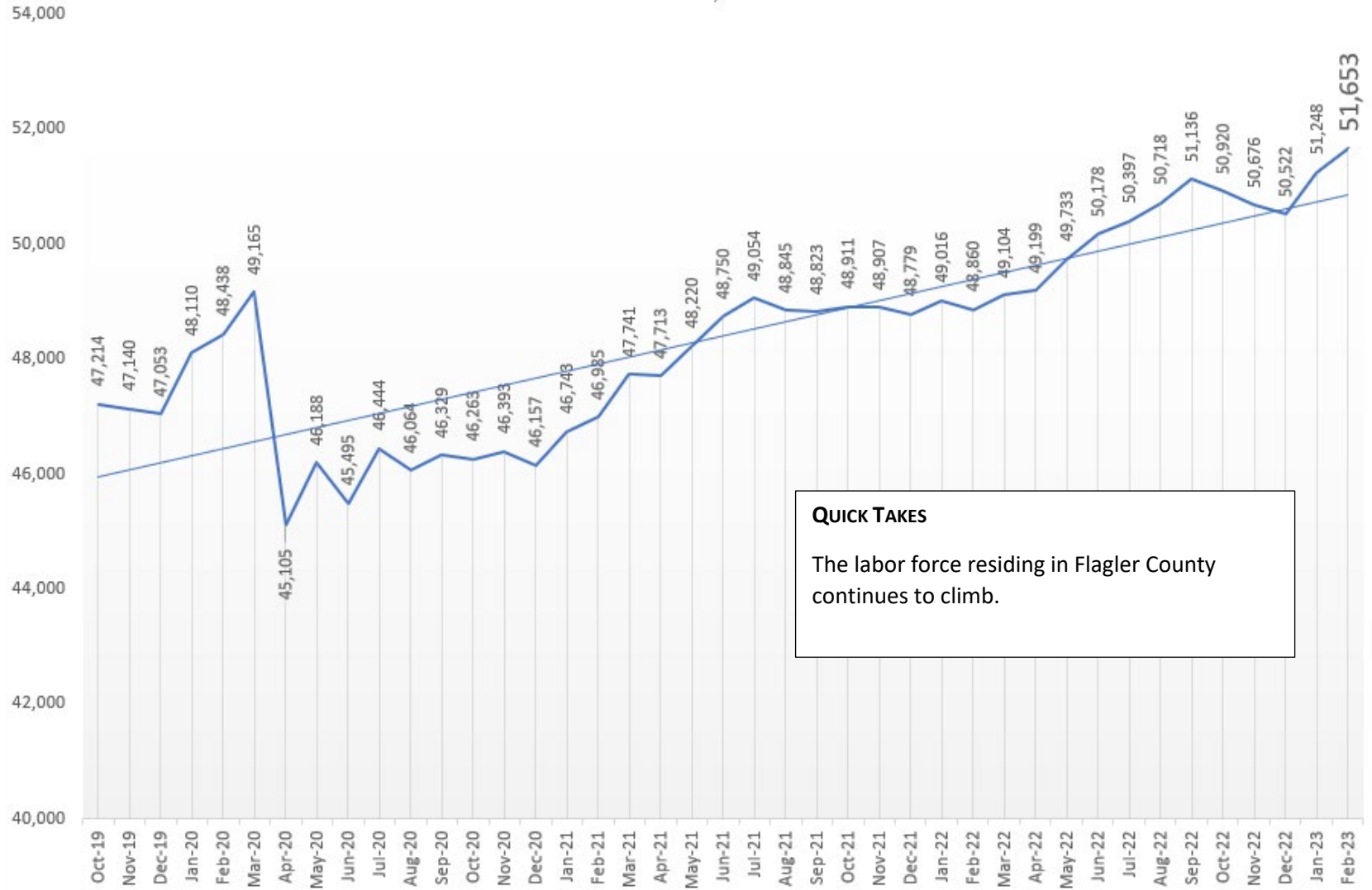
FLAGLER COUNTY | TOWNHOME / CONDO MEDIAN SALE PRICE

DATA SOURCE: Flagler County Association of Realtors, Inc



LABOR FORCE RESIDING IN FLAGLER COUNTY

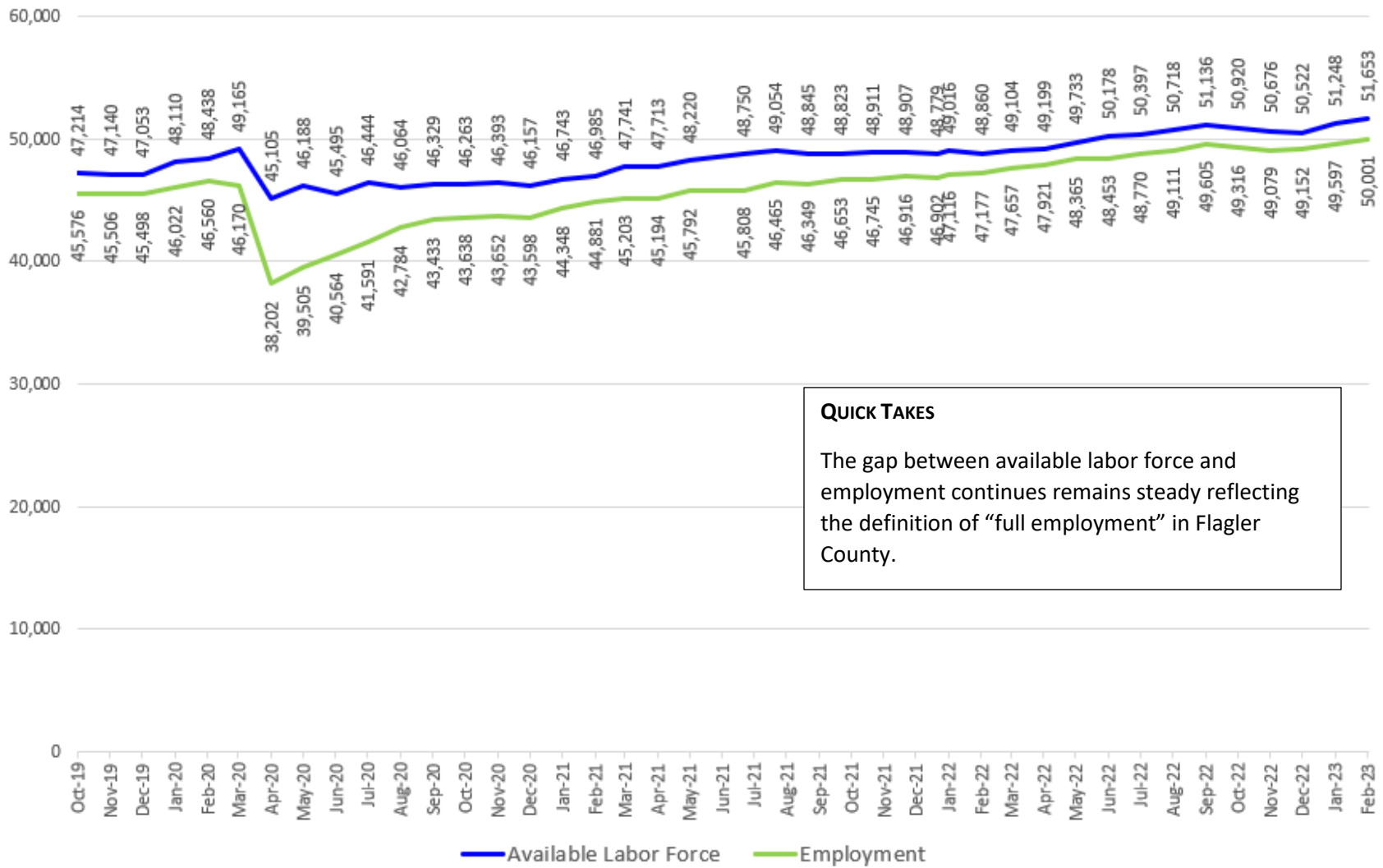
DATA SOURCE: U.S. DEPARTMENT OF LABOR, BUREAU OF LABOR STATISTICS, LOCAL AREA UNEMPLOYMENT STATISTIC PROGRAM IN COOPERATION WITH THE FLORIDA DEPARTMENT OF ECONOMIC OPPORTUNITY, BUREAU OF WORKFORCE STATISTICS AND ECONOMICS



QUICK TAKES
 The labor force residing in Flagler County continues to climb.

FLAGLER COUNTY | AVAILABLE LABOR VS EMPLOYMENT (AKA EMPLOYED FLAGLER COUNTY CITIZENS)

Data Source: U.S. Department of Labor, Bureau of Labor Statistics, Local Area Unemployment Statistic Program in cooperation with the Florida Department of Economic Opportunity

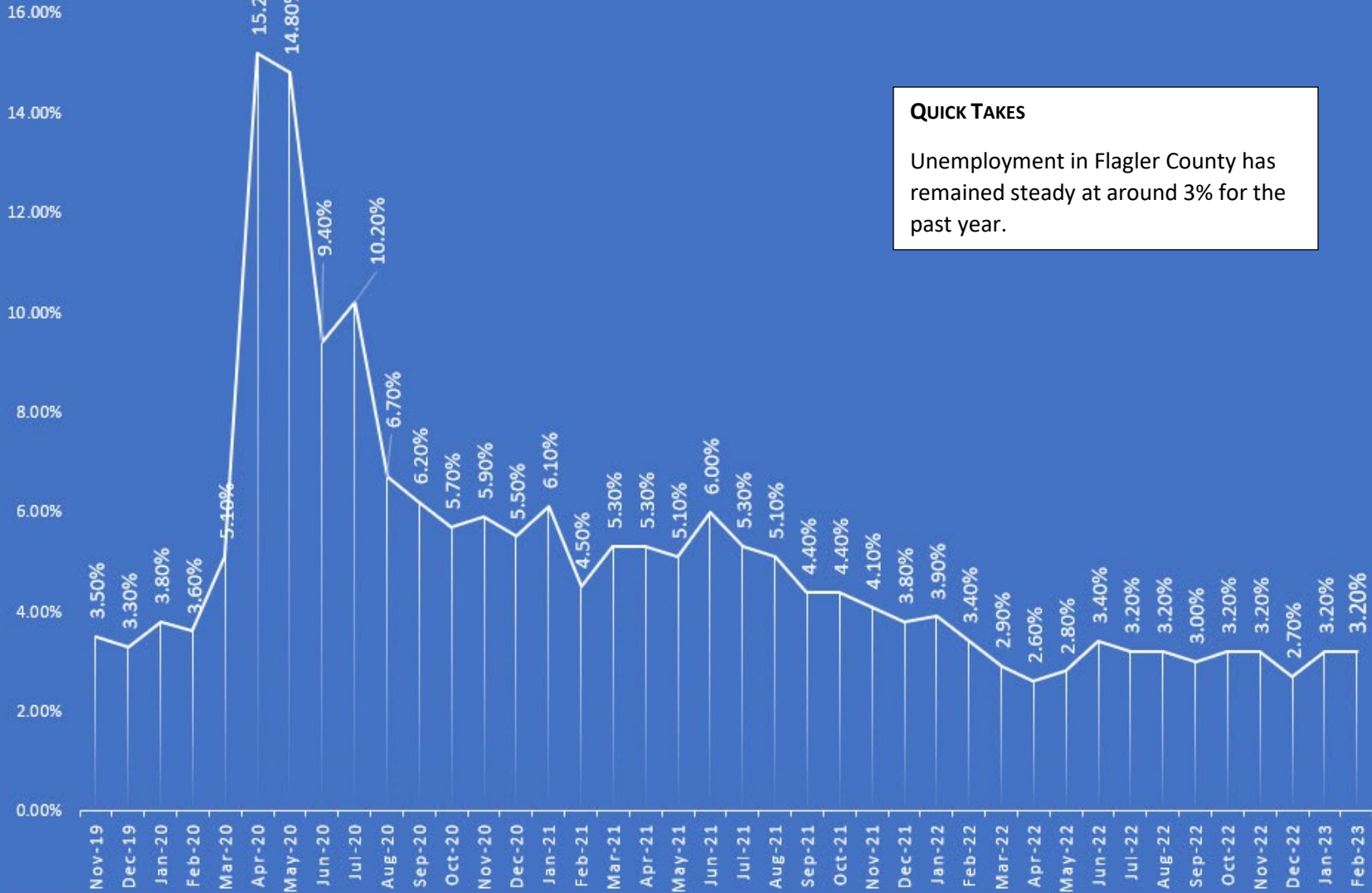


QUICK TAKES
 The gap between available labor force and employment continues to remain steady reflecting the definition of “full employment” in Flagler County.

UNEMPLOYMENT TREND IN FLAGLER COUNTY

DATA SOURCE: FLORIDA DEPARTMENT OF ECONOMIC OPPORTUNITY, BUREAU OF WORKFORCE STATISTICS & ECONOMIC RESEARCH

Chart Area

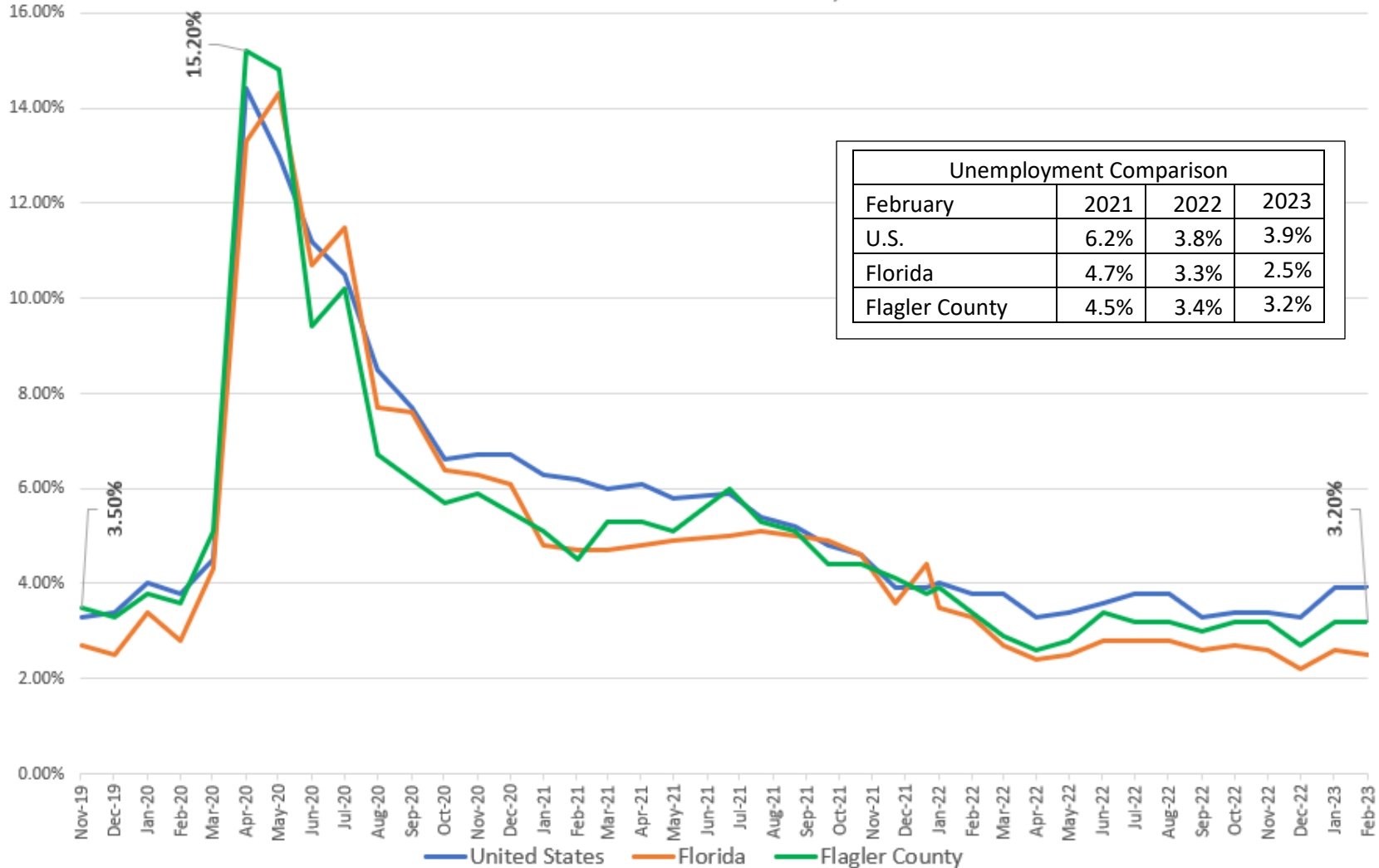


QUICK TAKES

Unemployment in Flagler County has remained steady at around 3% for the past year.

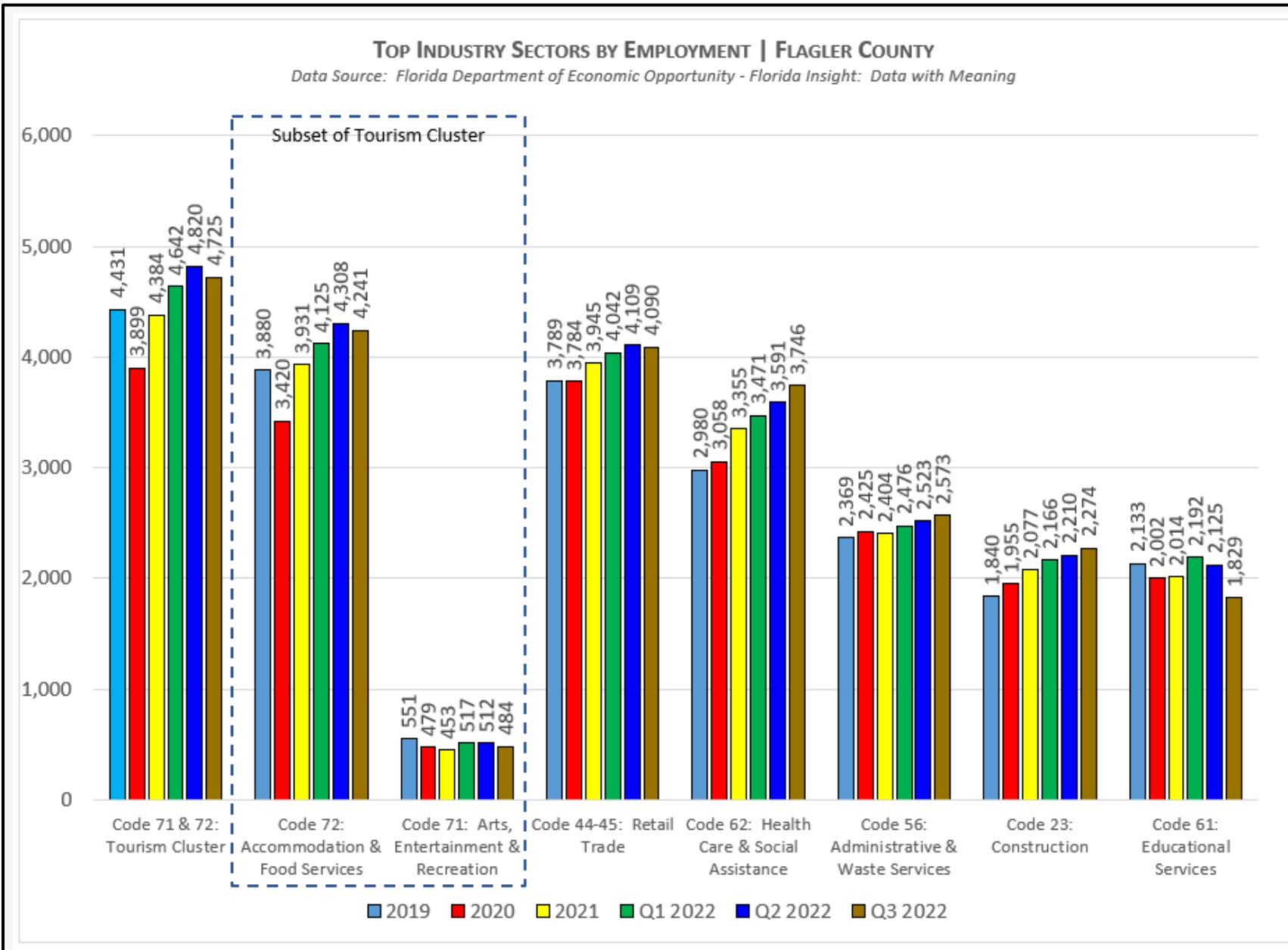
UNEMPLOYMENT TREND COMPARISON

DATA SOURCE: DATA SOURCE: U.S. DEPARTMENT OF LABOR, BUREAU OF LABOR STATISTICS, LOCAL AREA UNEMPLOYMENT STATISTIC PROGRAM IN COOPERATION WITH THE FLORIDA DEPARTMENT OF ECONOMIC OPPORTUNITY, BUREAU OF WORKFORCE STATISTICS



TOP INDUSTRY SECTORS BY EMPLOYMENT | FLAGLER COUNTY

Data Source: Florida Department of Economic Opportunity - Florida Insight: Data with Meaning



FLAGLER COUNTY EMPLOYMENT BY INDUSTRY SECTOR | Q-3 2022 | 26,539 TOTAL EMPLOYEES

Data Source: Florida Department of Economic Opportunity, Bureau of Workforce Statistics & Economic Research, QCEW, Data with Meaning

