

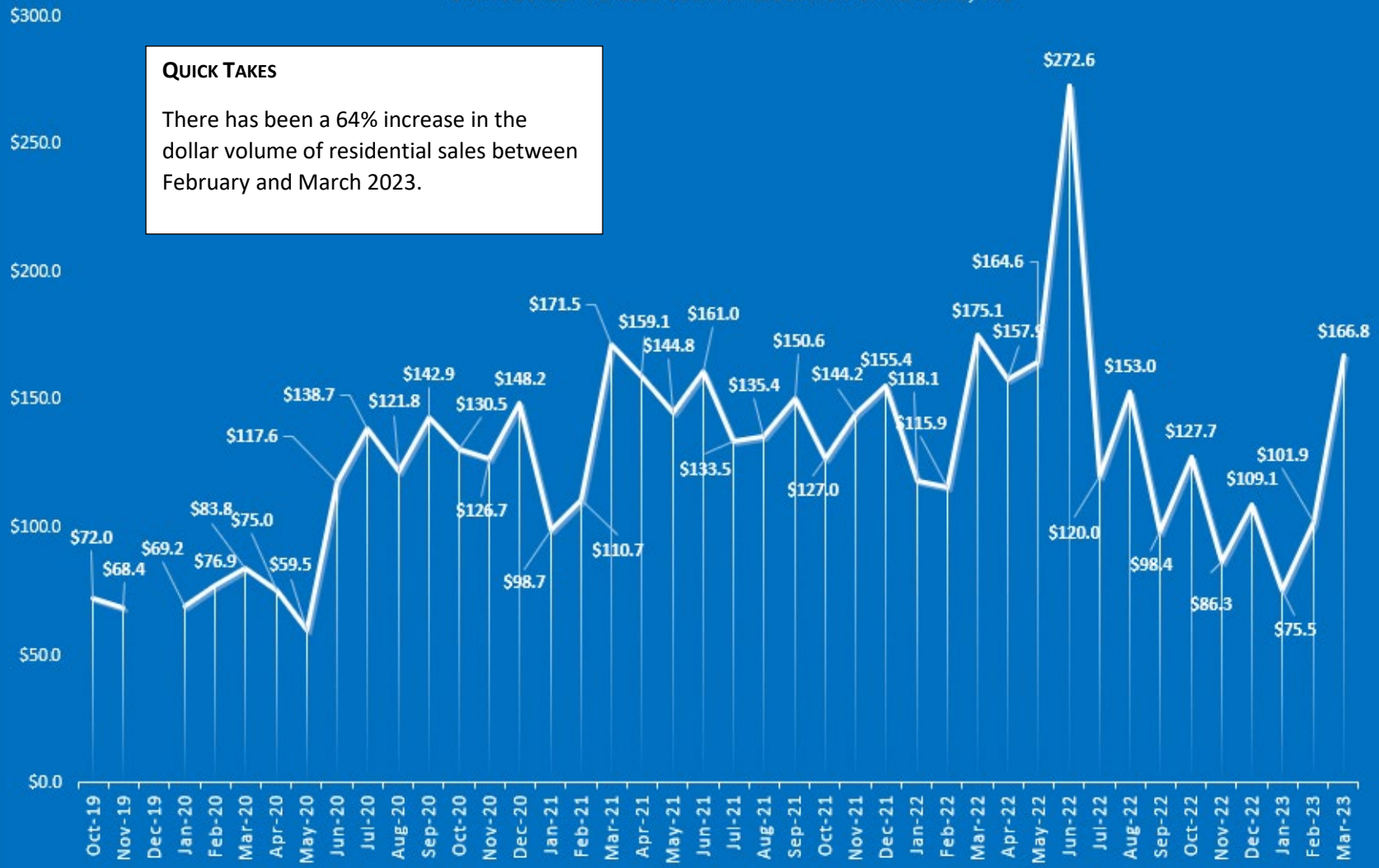
RESIDENTIAL SALES | DOLLAR VOLUME IN MILLIONS

SINGLE FAMILY, TOWN HOME/CONDO & MANUFACTURED SALES COMBINED

DATA SOURCE: FLAGLER COUNTY ASSOCIATION OF REALTORS, INC

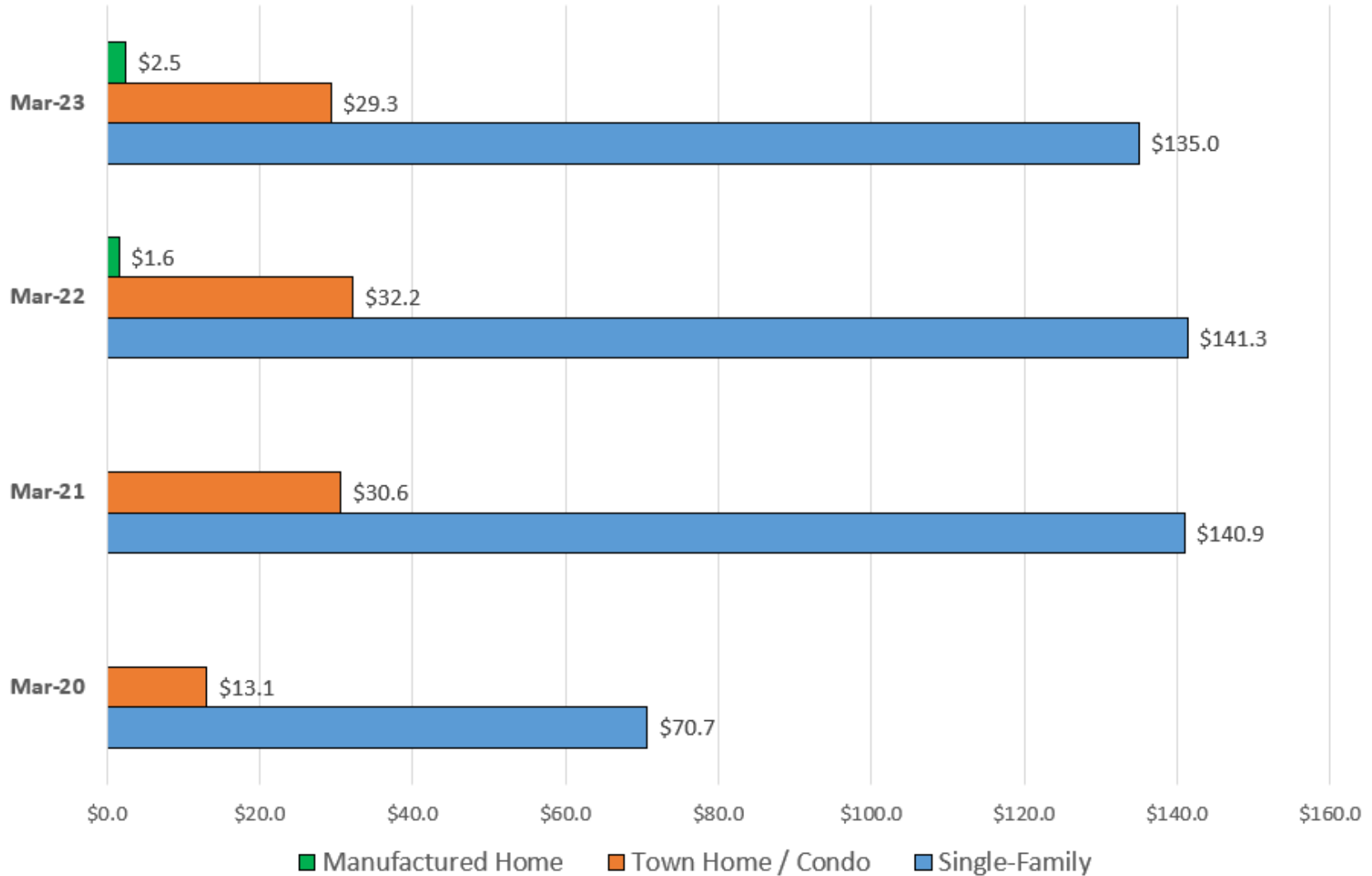
QUICK TAKES

There has been a 64% increase in the dollar volume of residential sales between February and March 2023.



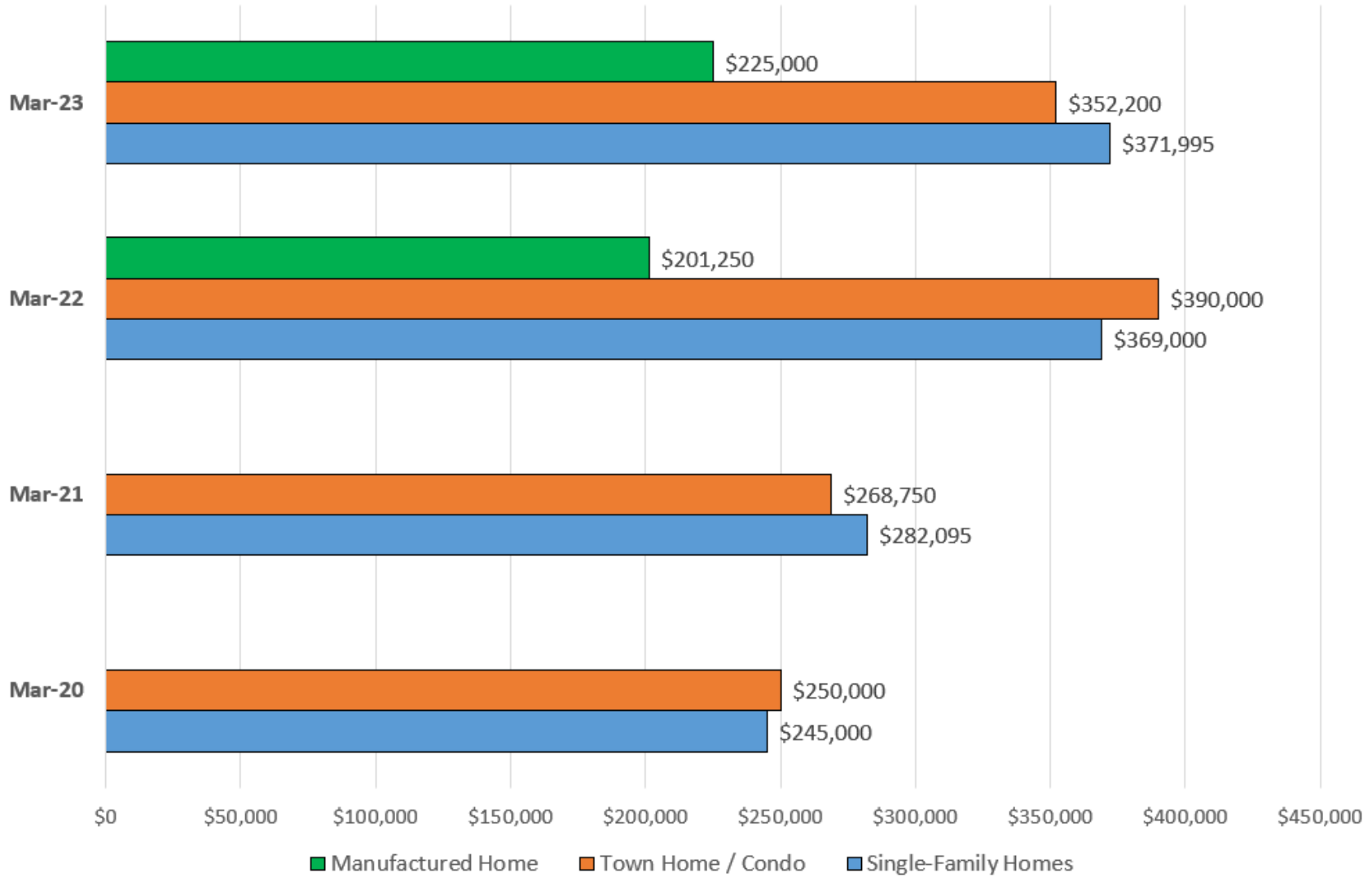
RESIDENTIAL REAL ESTATE SALES: VOLUME IN MILLIONS

Data Source: Flagler County Association of Realtors, Inc



RESIDENTIAL REAL ESTATE: MEDIAN SALE PRICE

Data Source: Flagler County Association of Realtors, Inc.



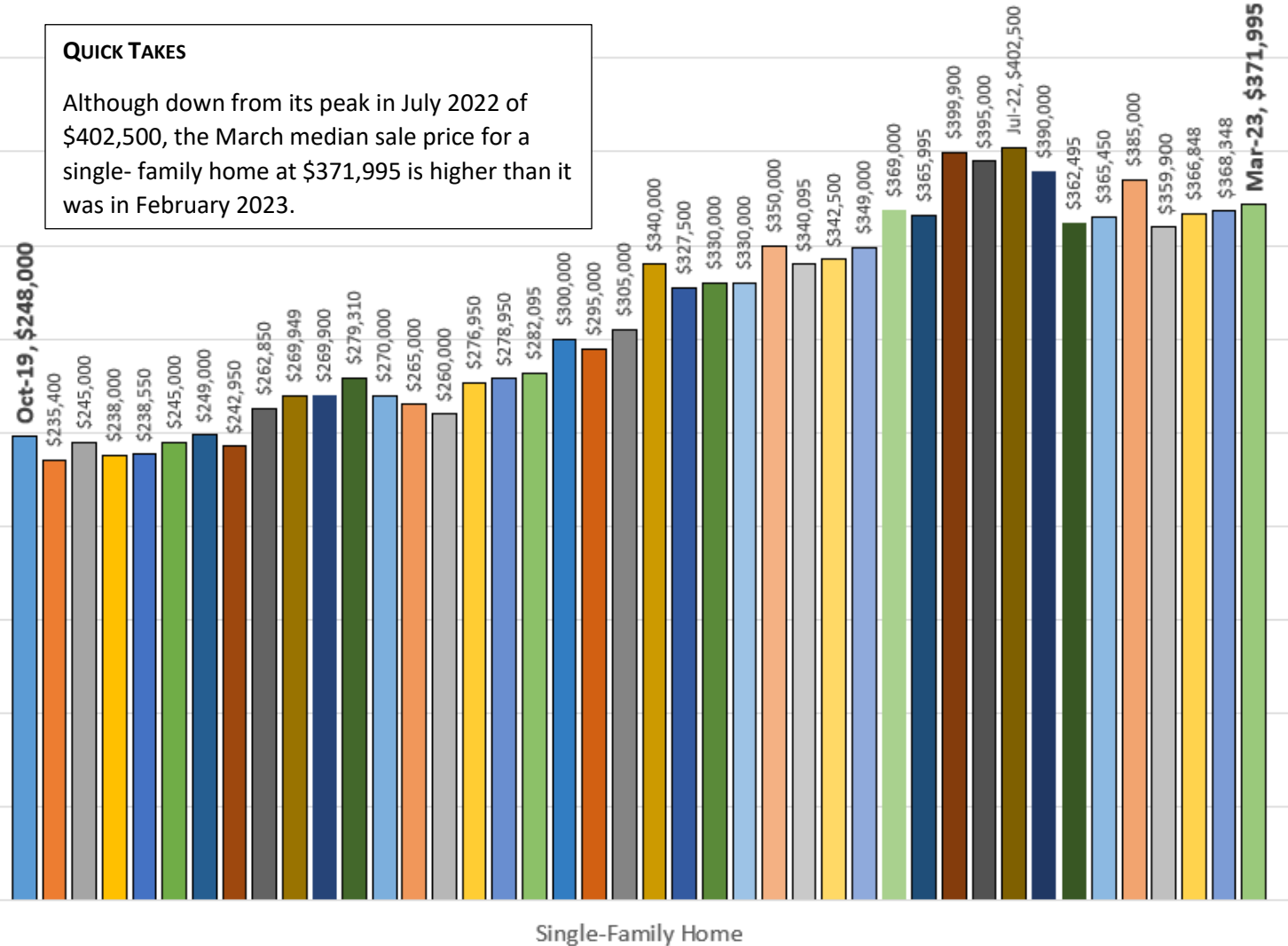
FLAGLER COUNTY | SINGLE FAMILY MEDIAN SALE PRICE

DATA SOURCE: Flagler County Association of Realtors, Inc

\$450,000
\$400,000
\$350,000
\$300,000
\$250,000
\$200,000
\$150,000
\$100,000
\$50,000
\$0

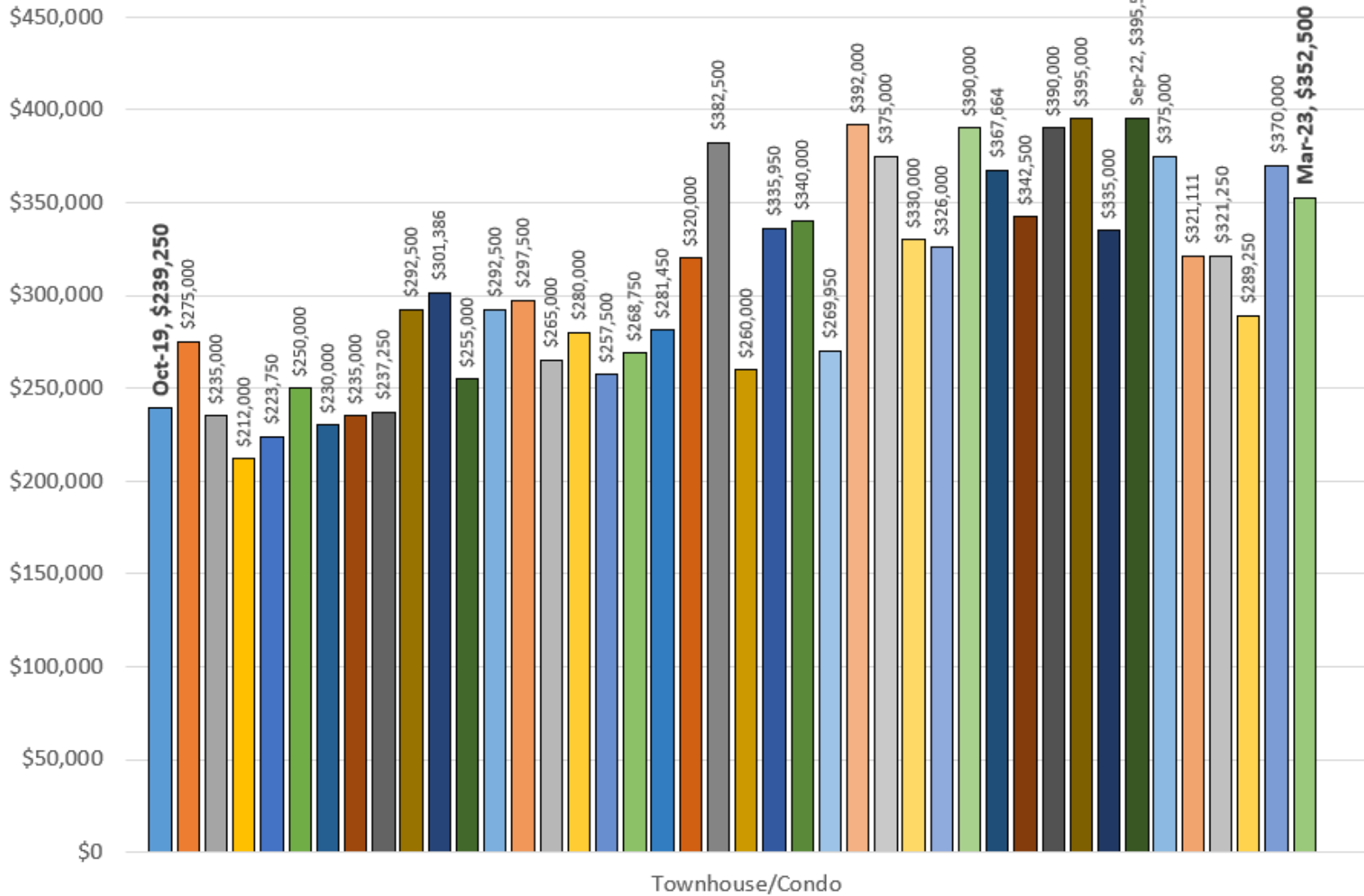
QUICK TAKES

Although down from its peak in July 2022 of \$402,500, the March median sale price for a single-family home at \$371,995 is higher than it was in February 2023.



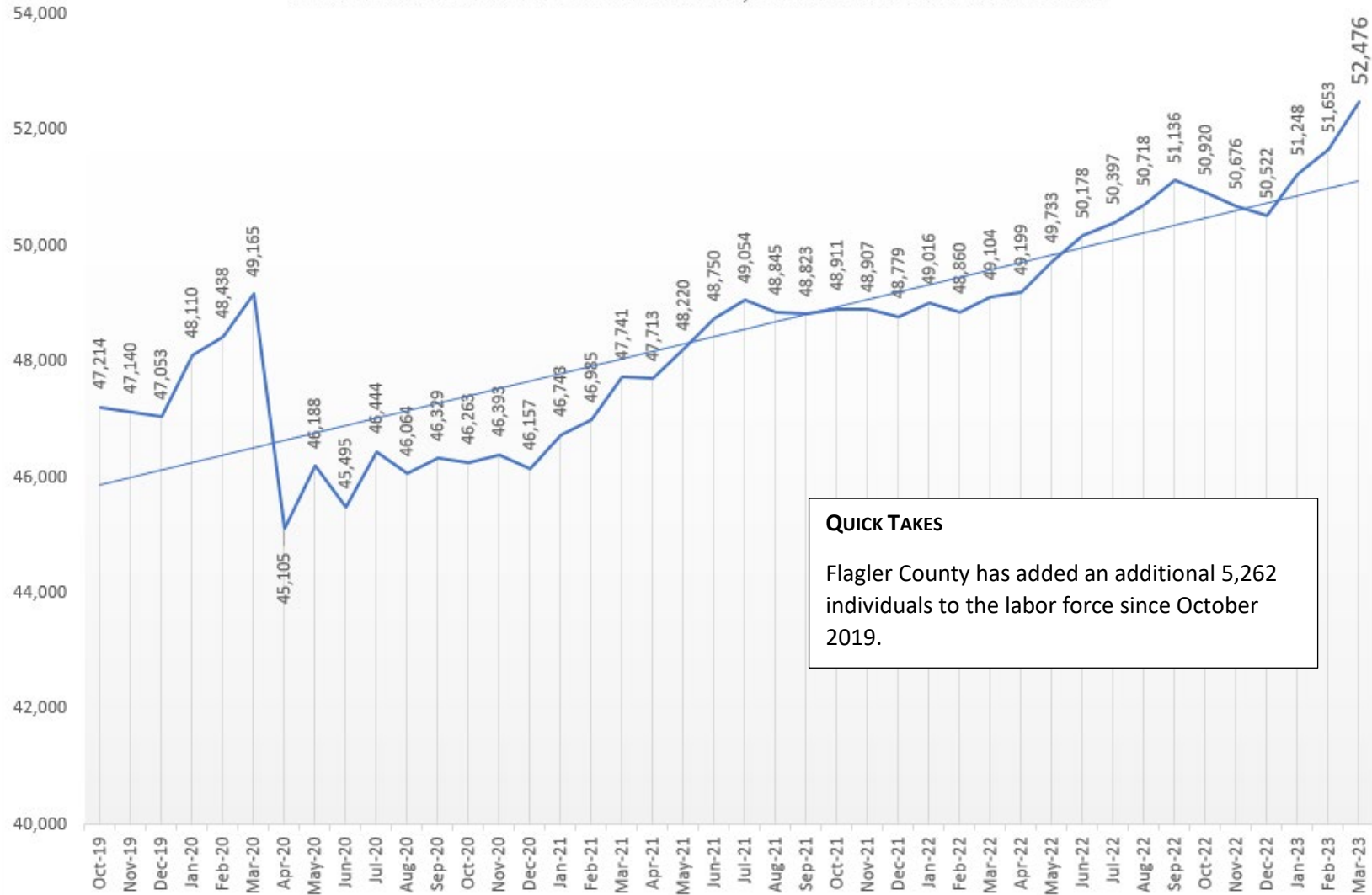
FLAGLER COUNTY | TOWNHOME / CONDO MEDIAN SALE PRICE

DATA SOURCE: Flagler County Association of Realtors, Inc



LABOR FORCE RESIDING IN FLAGLER COUNTY

DATA SOURCE: U.S. DEPARTMENT OF LABOR, BUREAU OF LABOR STATISTICS, LOCAL AREA UNEMPLOYMENT STATISTIC PROGRAM IN COOPERATION WITH THE FLORIDA DEPARTMENT OF ECONOMIC OPPORTUNITY, BUREAU OF WORKFORCE STATISTICS AND ECON



QUICK TAKES
 Flagler County has added an additional 5,262 individuals to the labor force since October 2019.

FLAGLER COUNTY | AVAILABLE LABOR VS EMPLOYMENT (AKA EMPLOYED FLAGLER COUNTY CITIZENS)

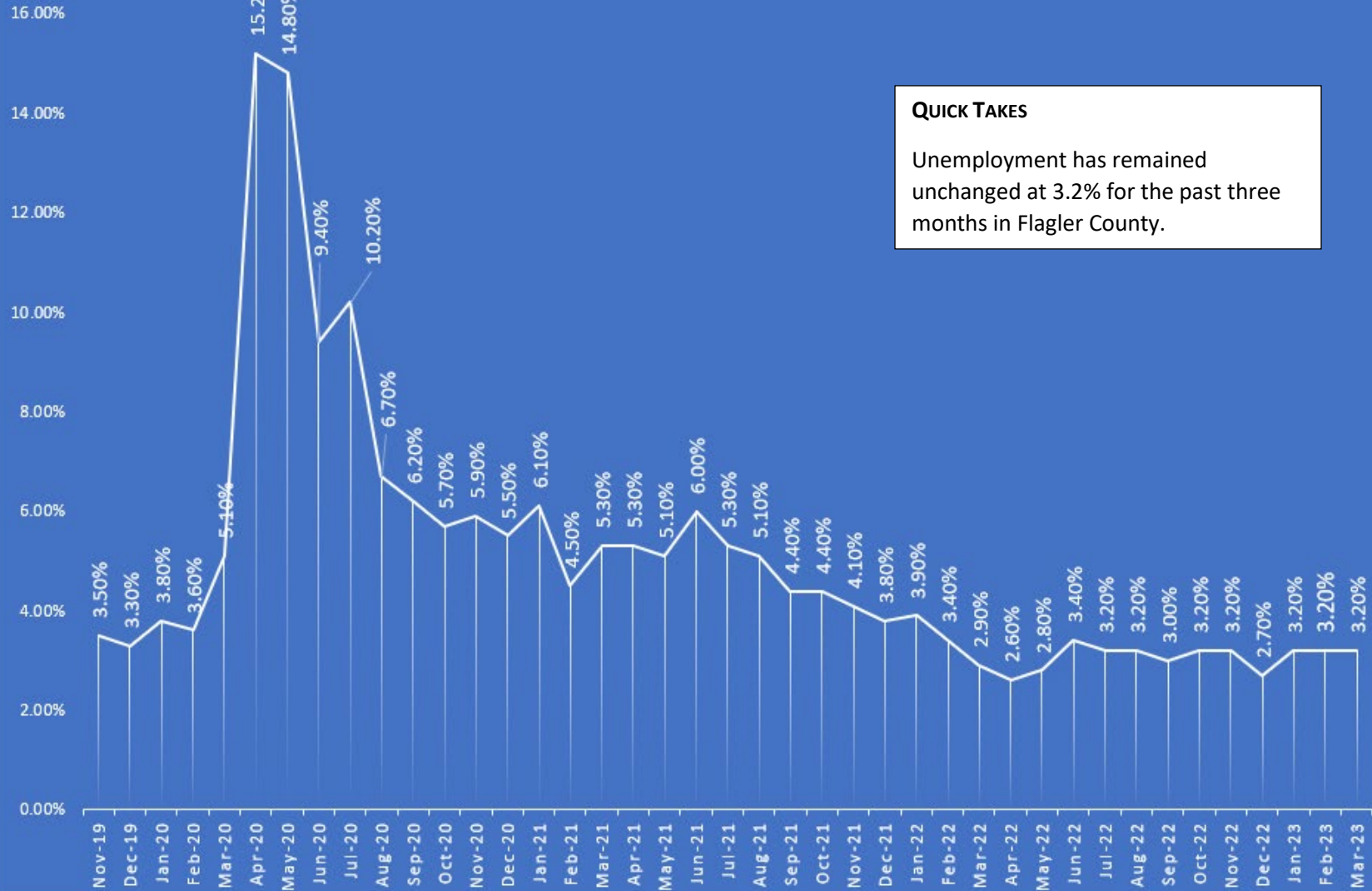
Data Source: U.S. Department of Labor, Bureau of Labor Statistics, Local Area Unemployment Statistic Program in cooperation with the Florida Department of Economic Oppor



QUICK TAKES
 The gap between available labor force and employment continues to remain steady reflecting the definition of "full employment" in Flagler County.

UNEMPLOYMENT TREND IN FLAGLER COUNTY

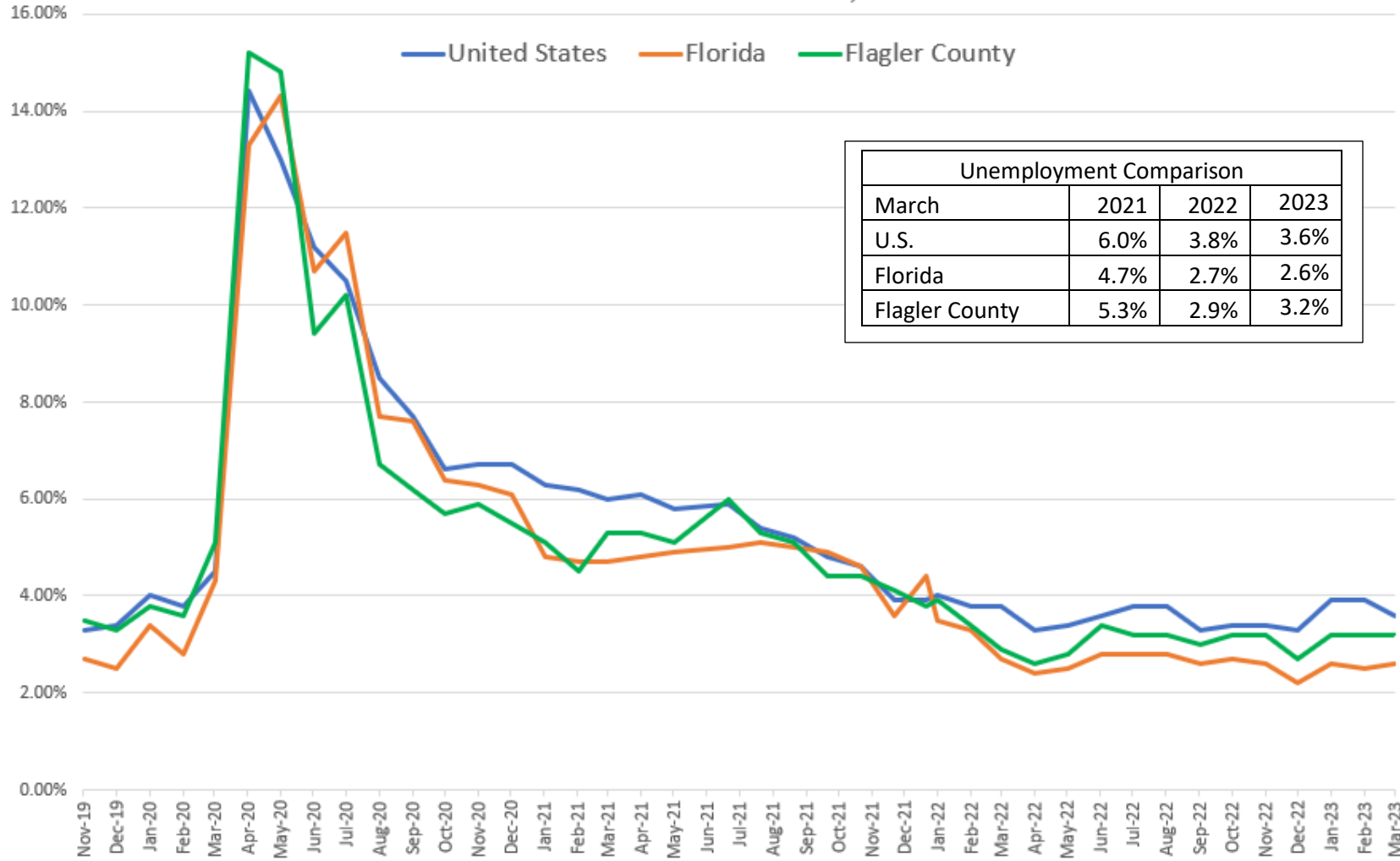
DATA SOURCE: FLORIDA DEPARTMENT OF ECONOMIC OPPORTUNITY, BUREAU OF WORKFORCE STATISTICS & ECONOMIC RESEARCH



QUICK TAKES
 Unemployment has remained unchanged at 3.2% for the past three months in Flagler County.

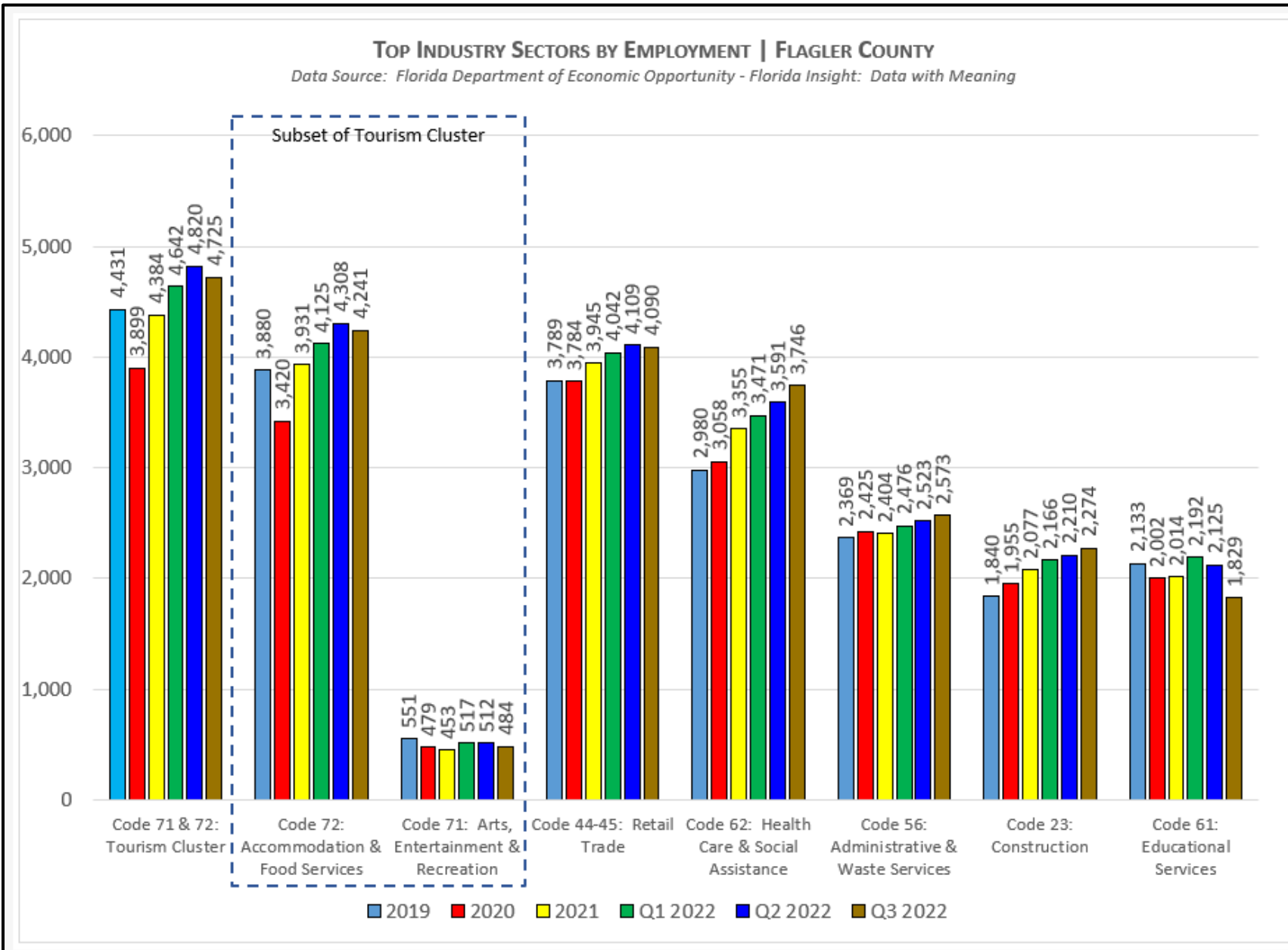
UNEMPLOYMENT TREND COMPARISON

DATA SOURCE: DATA SOURCE: U.S. DEPARTMENT OF LABOR, BUREAU OF LABOR STATISTICS, LOCAL AREA UNEMPLOYMENT STATISTIC PROGRAM IN COOPERATION WITH THE FLORIDA DEPARTMENT OF ECONOMIC OPPORTUNITY, BUREAU OF WORKFORCE STATISTICS



TOP INDUSTRY SECTORS BY EMPLOYMENT | FLAGLER COUNTY

Data Source: Florida Department of Economic Opportunity - Florida Insight: Data with Meaning



FLAGLER COUNTY EMPLOYMENT BY INDUSTRY SECTOR | Q-3 2022 | 26,539 TOTAL EMPLOYEES

Data Source: Florida Department of Economic Opportunity, Bureau of Workforce Statistics & Economic Research, QCEW, Data with Meaning

