

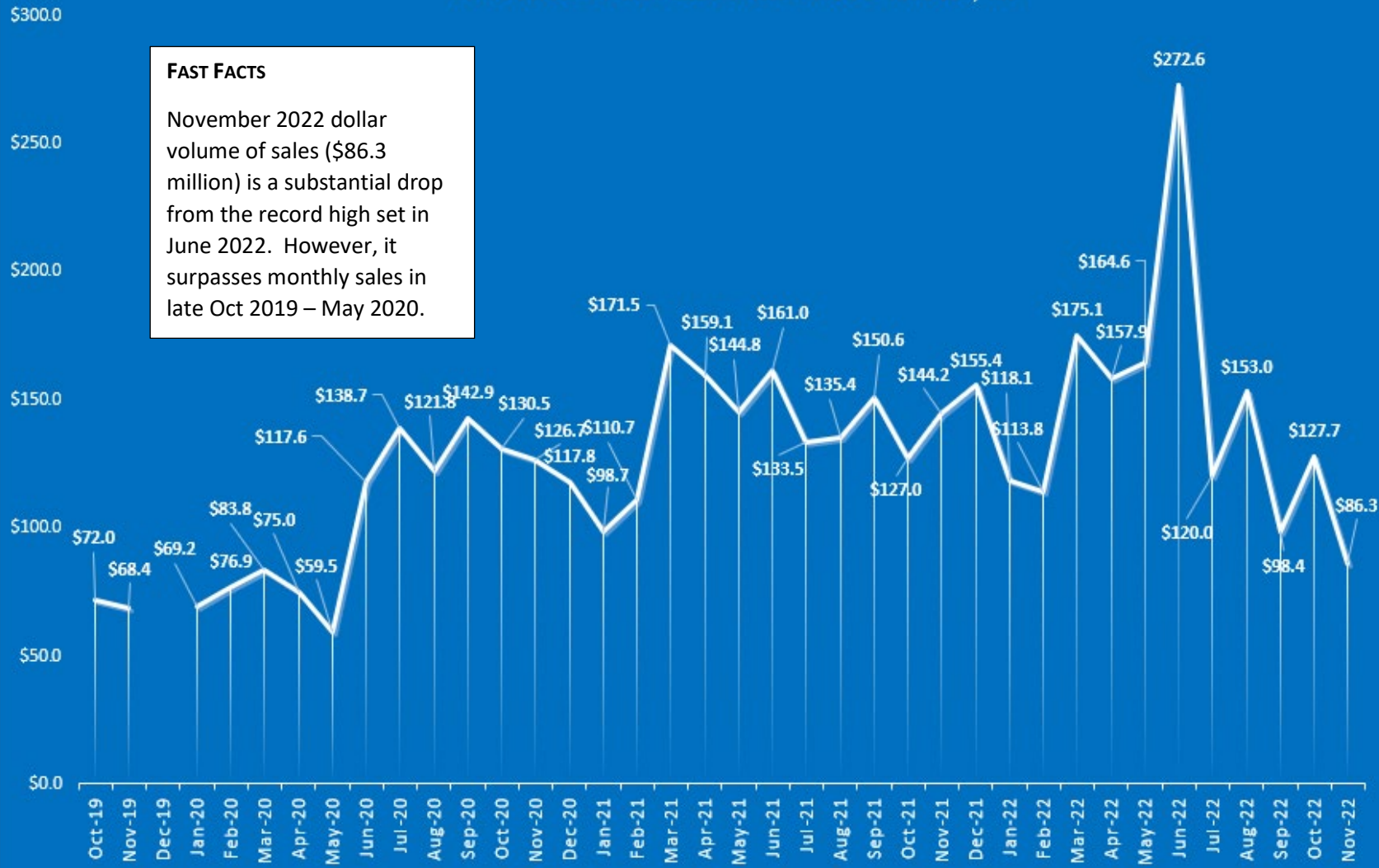
### RESIDENTIAL SALES | DOLLAR VOLUME IN MILLIONS

SINGLE FAMILY, TOWN HOME/CONDO & MANUFACTURED SALES COMBINED

DATA SOURCE: FLAGLER COUNTY ASSOCIATION OF REALTORS, INC

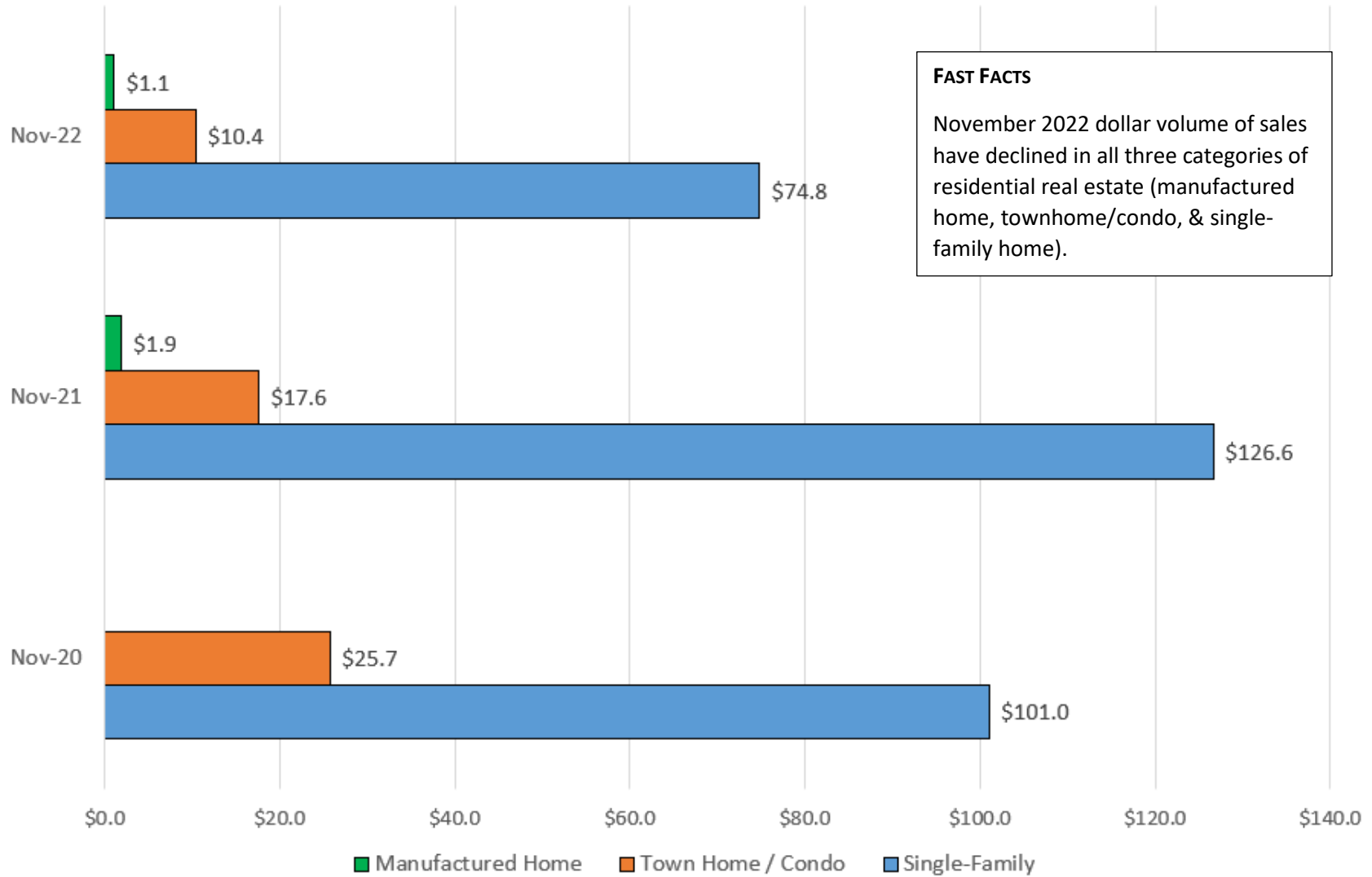
**FAST FACTS**

November 2022 dollar volume of sales (\$86.3 million) is a substantial drop from the record high set in June 2022. However, it surpasses monthly sales in late Oct 2019 – May 2020.



### RESIDENTIAL REAL ESTATE SALES: VOLUME IN MILLIONS

Data Source: Flagler County Association of Realtors, Inc



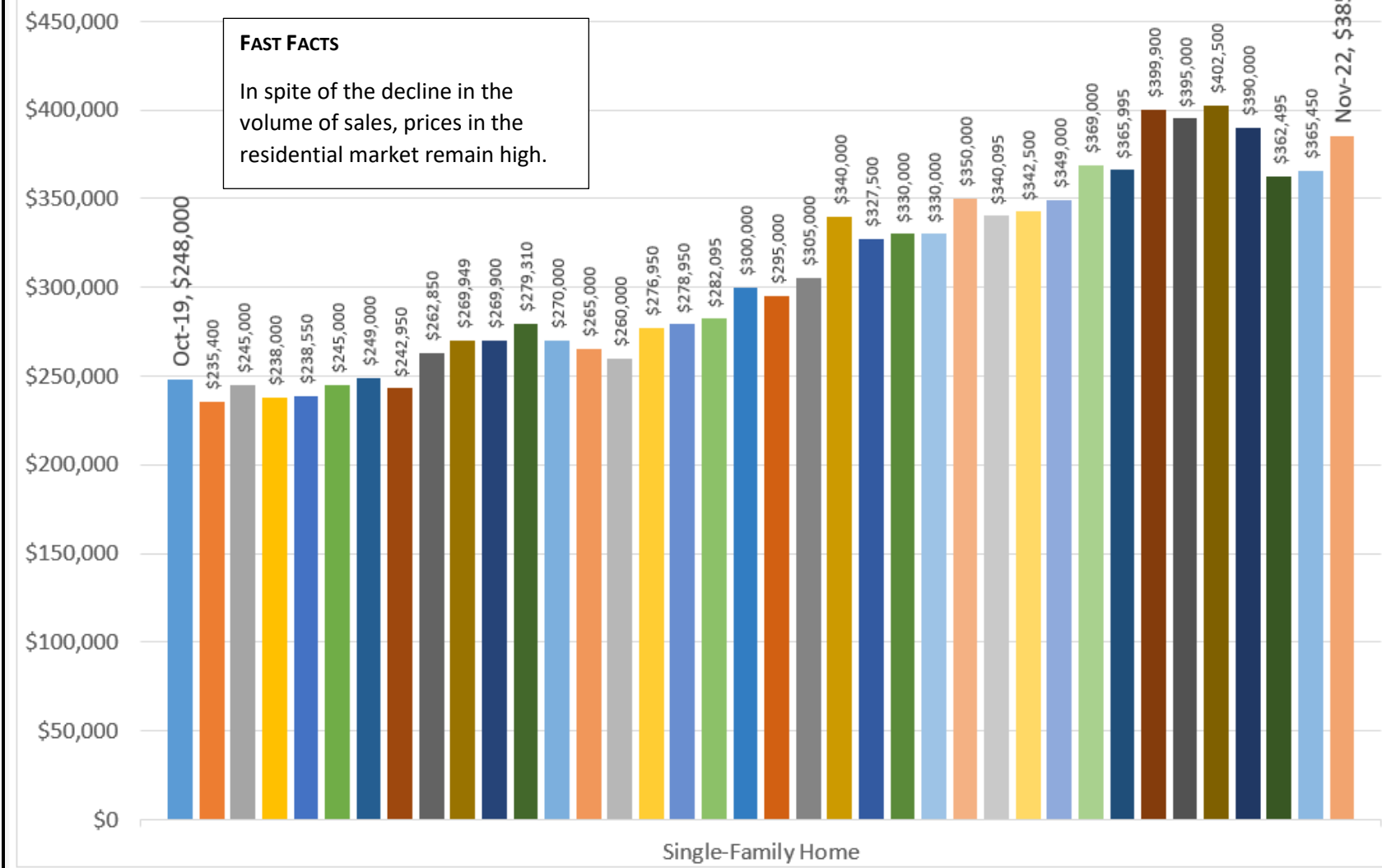
**FAST FACTS**  
 November 2022 dollar volume of sales have declined in all three categories of residential real estate (manufactured home, townhome/condo, & single-family home).

### FLAGLER COUNTY | SINGLE FAMILY MEDIAN SALE PRICE

DATA SOURCE: Flagler County Association of Realtors, Inc

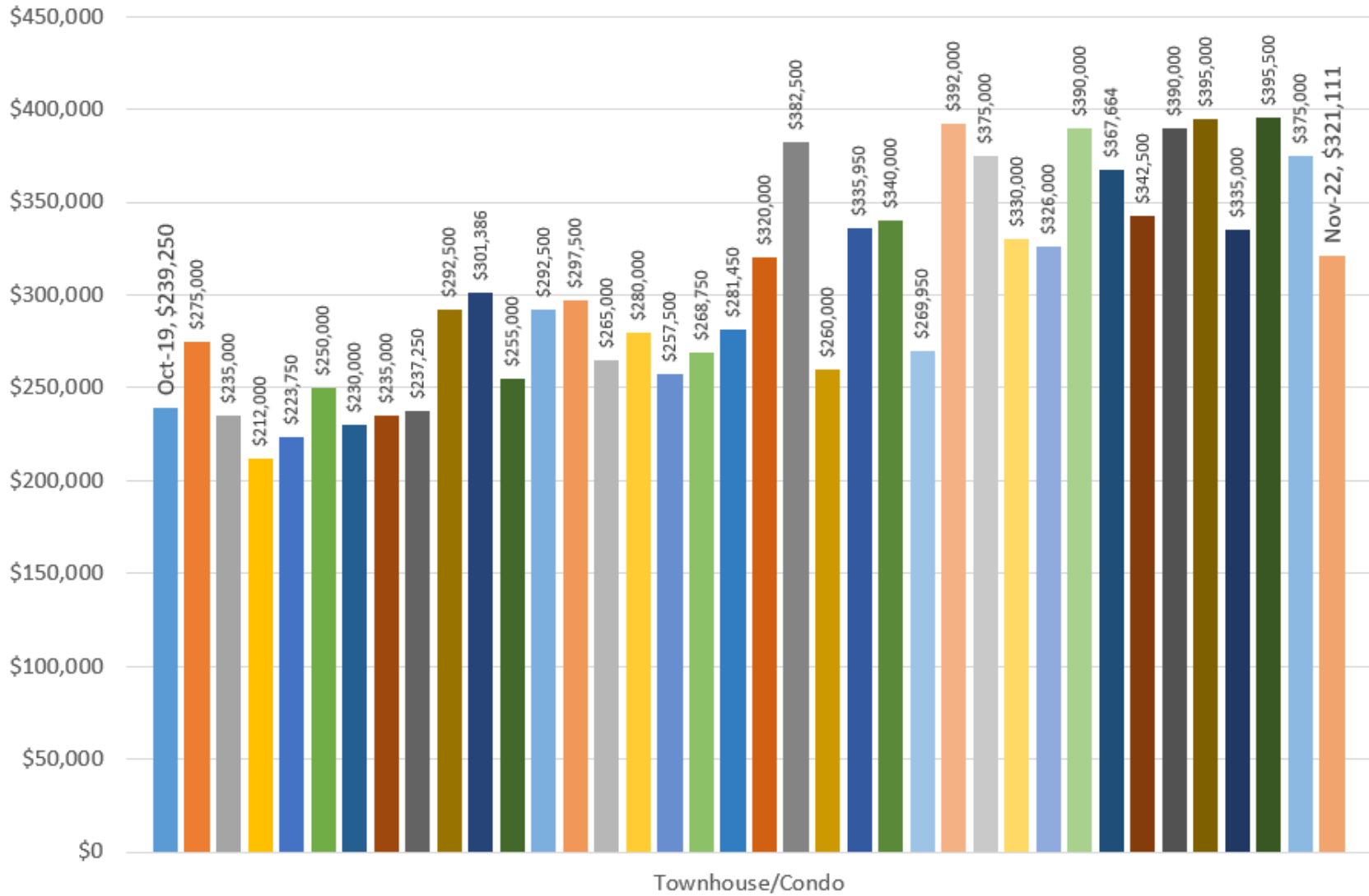
**FAST FACTS**

In spite of the decline in the volume of sales, prices in the residential market remain high.



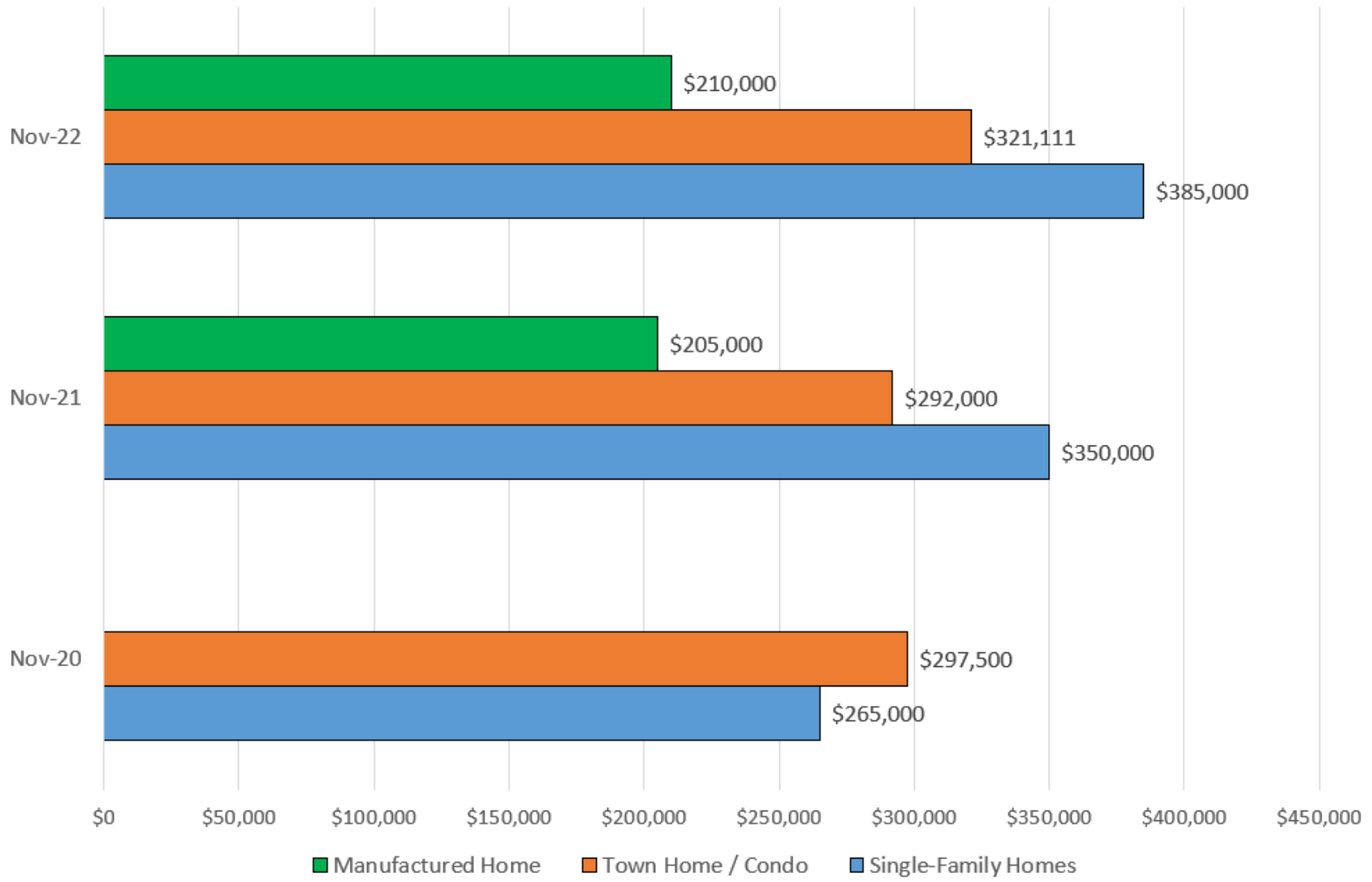
### FLAGLER COUNTY | TOWNHOME / CONDO MEDIAN SALE PRICE

DATA SOURCE: Flagler County Association of Realtors, Inc



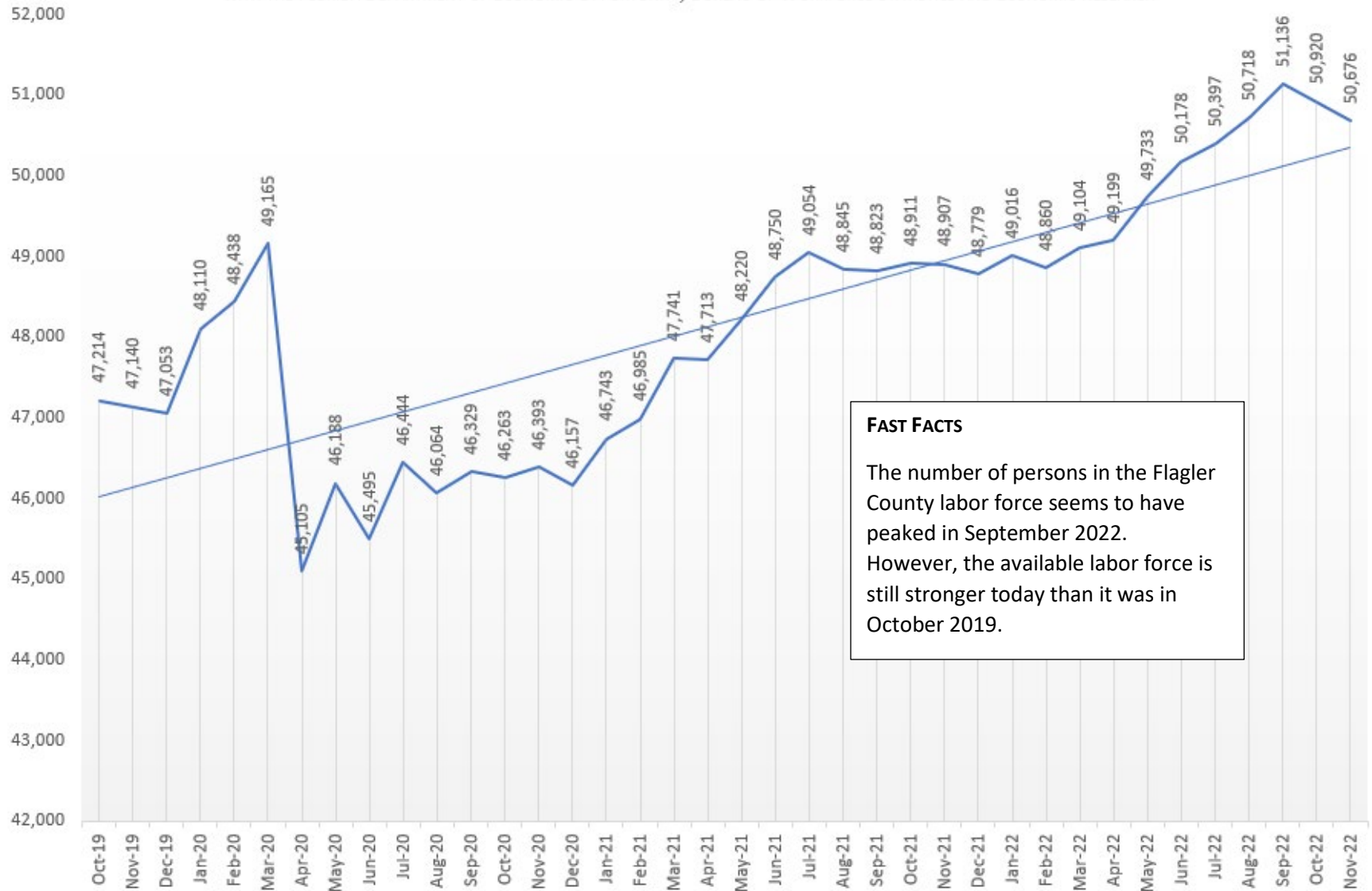
### RESIDENTIAL REAL ESTATE: MEDIAN SALE PRICE

Data Source: Flagler County Association of Realtors, Inc.



### LABOR FORCE RESIDING IN FLAGLER COUNTY

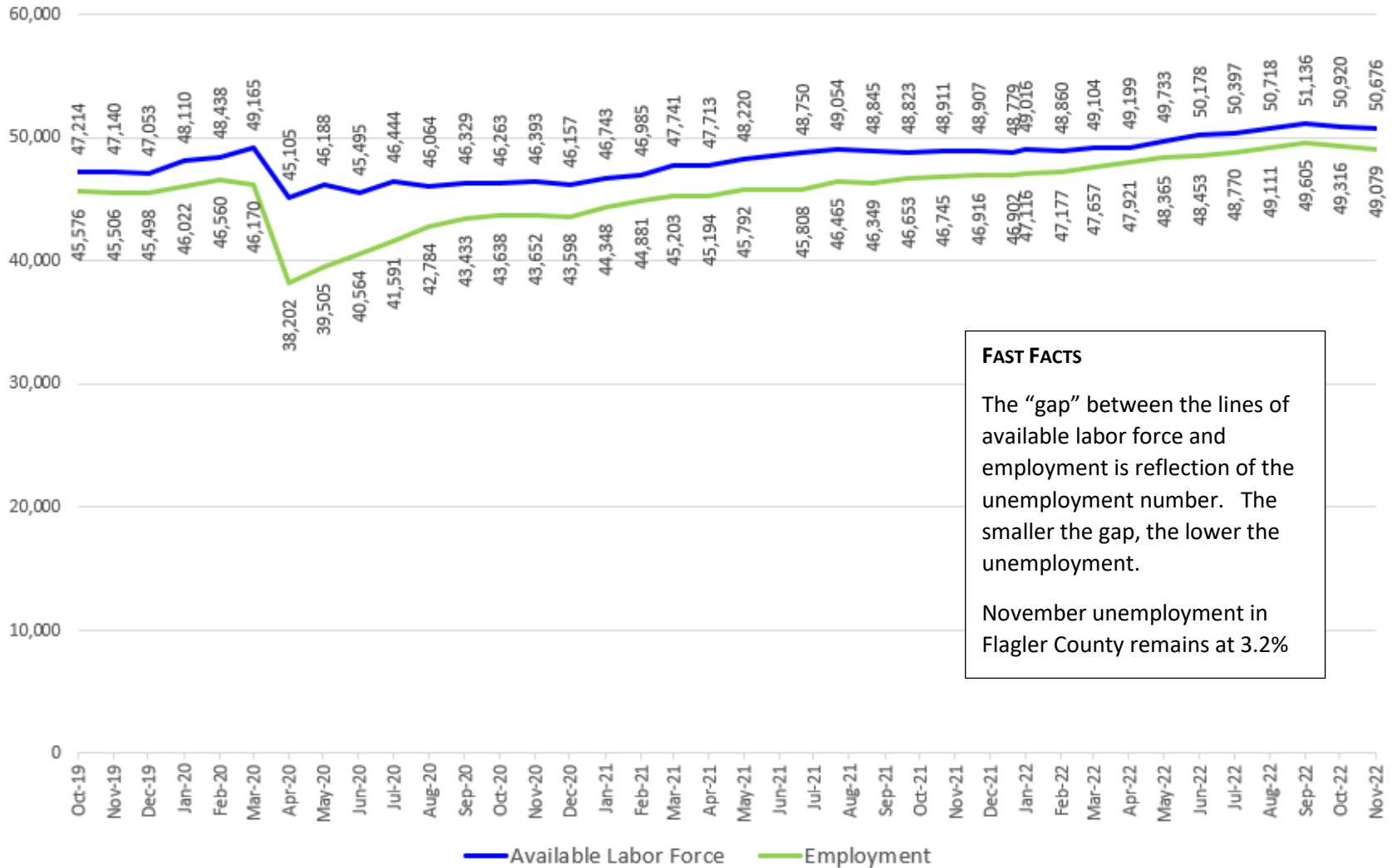
DATA SOURCE: U.S. DEPARTMENT OF LABOR, BUREAU OF LABOR STATISTICS, LOCAL AREA UNEMPLOYMENT STATISTIC PROGRAM IN COOPERATION WITH THE FLORIDA DEPARTMENT OF ECONOMIC OPPORTUNITY, BUREAU OF WORKFORCE STATISTICS AND ECONOMIC RESEARCH



**FAST FACTS**  
 The number of persons in the Flagler County labor force seems to have peaked in September 2022. However, the available labor force is still stronger today than it was in October 2019.

### FLAGLER COUNTY | AVAILABLE LABOR VS EMPLOYMENT

Data Source: U.S. Department of Labor, Bureau of Labor Statistics, Local Area Unemployment Statistic Program in cooperation with the Florida Department of Economic Opportunity, Bureau of Workforce Statistics



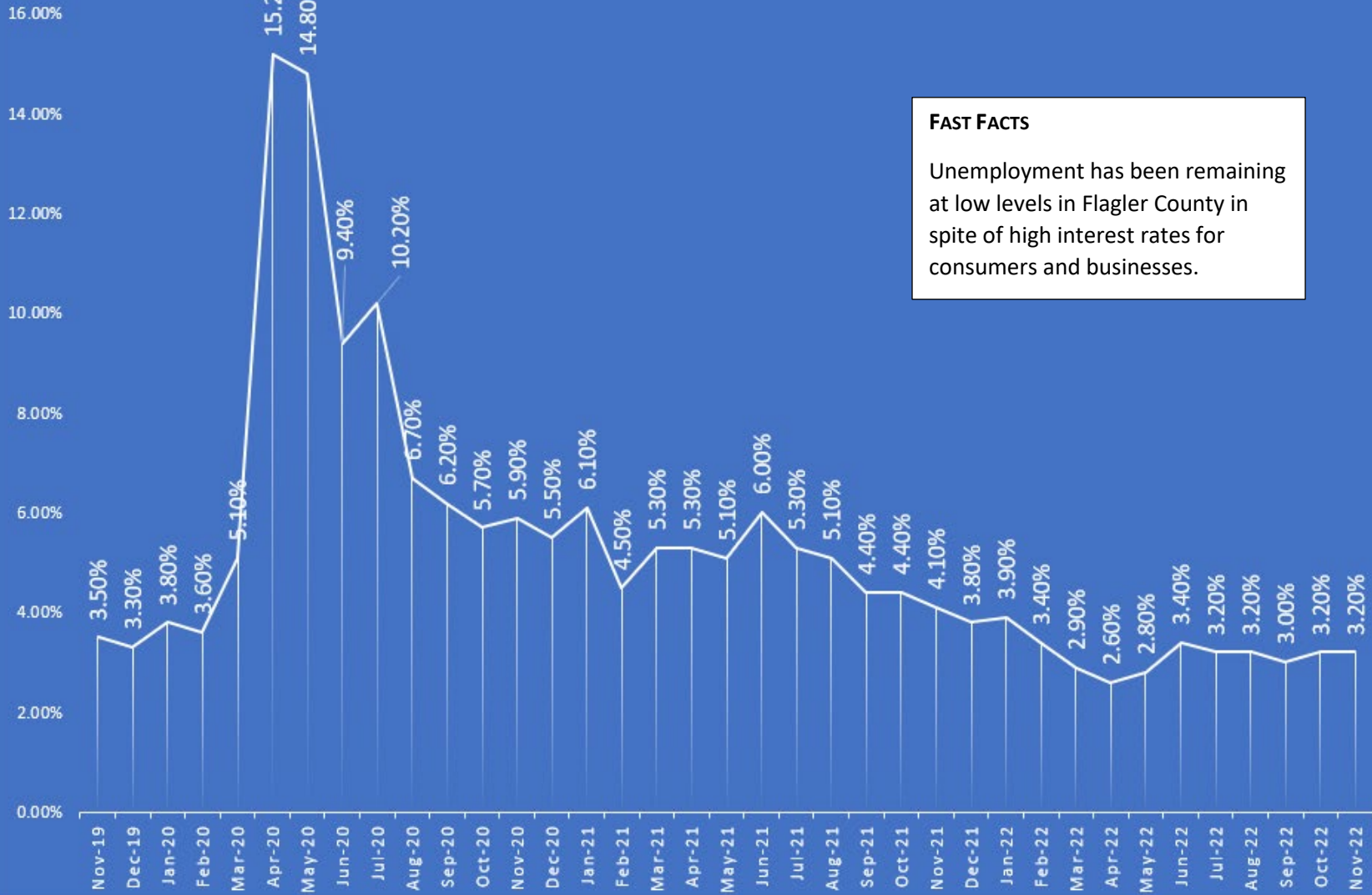
**FAST FACTS**

The “gap” between the lines of available labor force and employment is reflection of the unemployment number. The smaller the gap, the lower the unemployment.

November unemployment in Flagler County remains at 3.2%

### UNEMPLOYMENT TREND IN FLAGLER COUNTY

DATA SOURCE: FLORIDA DEPARTMENT OF ECONOMIC OPPORTUNITY, BUREAU OF WORKFORCE STATISTICS & ECONOMIC RESEARCH

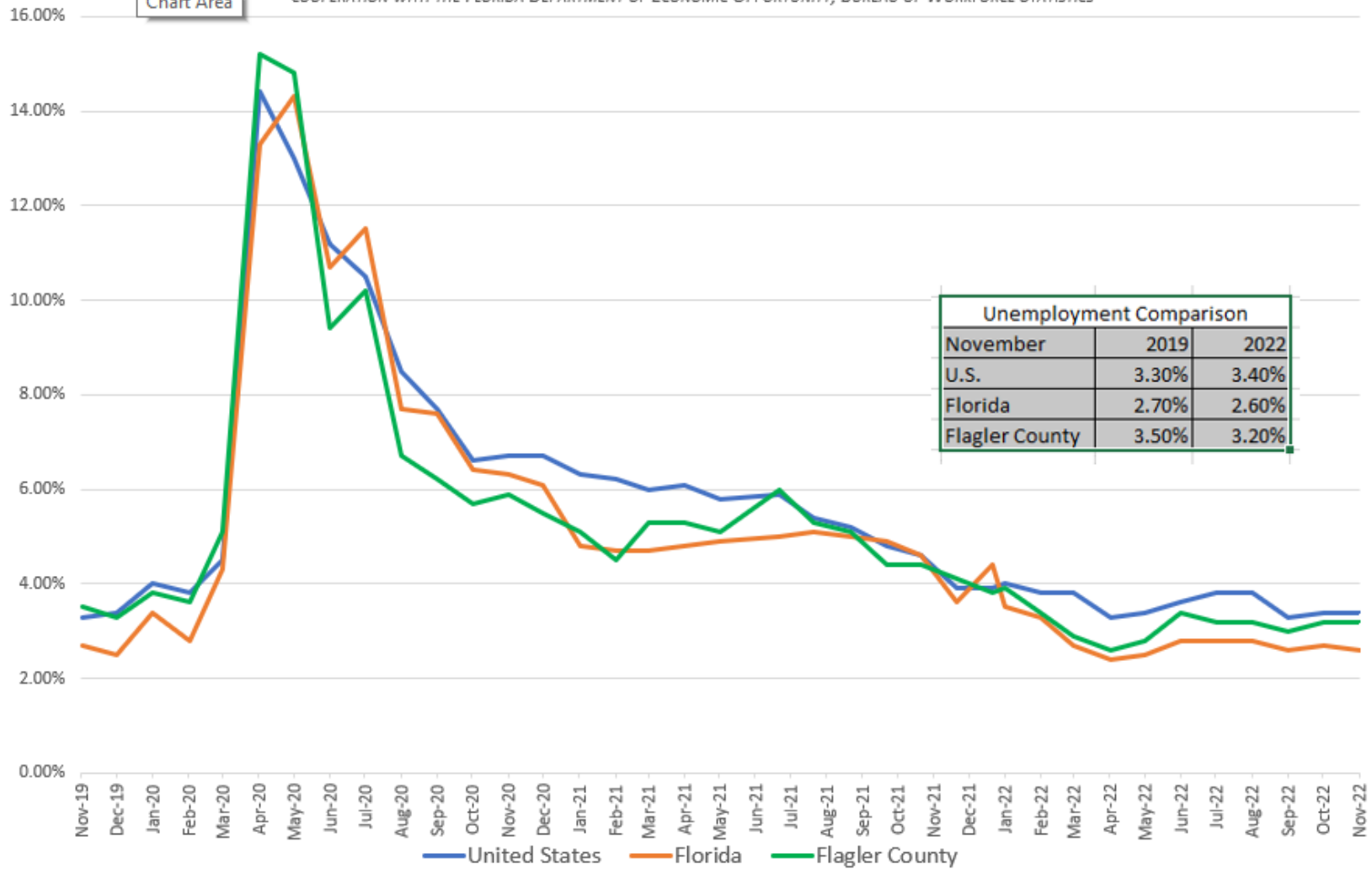


**FAST FACTS**  
 Unemployment has been remaining at low levels in Flagler County in spite of high interest rates for consumers and businesses.



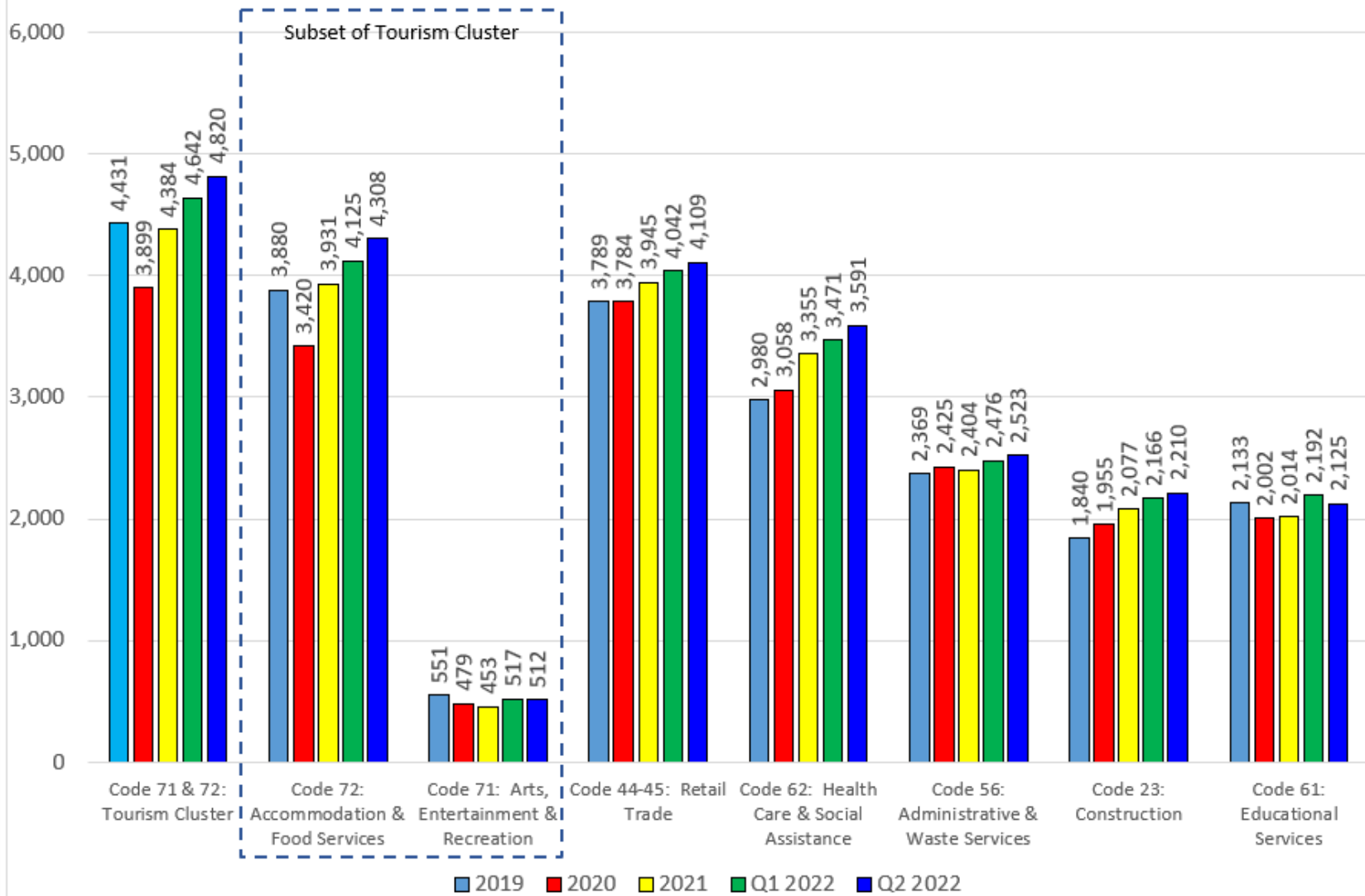
### UNEMPLOYMENT TREND COMPARISON

DATA SOURCE: U.S. DEPARTMENT OF LABOR, BUREAU OF LABOR STATISTICS, LOCAL AREA UNEMPLOYMENT STATISTIC PROGRAM IN COOPERATION WITH THE FLORIDA DEPARTMENT OF ECONOMIC OPPORTUNITY, BUREAU OF WORKFORCE STATISTICS



TOP INDUSTRY SECTORS BY EMPLOYMENT | FLAGLER COUNTY | 26,534 TOTAL EMPLOYEES

Data Source: Florida Department of Economic Opportunity - Florida Insight: Data with Meaning



FLAGLER COUNTY EMPLOYMENT BY INDUSTRY SECTOR | Q2 2022 | 26,534 TOTAL EMPLOYEES

DATA SOURCE: FLORIDA DEPARTMENT OF ECONOMIC OPPORTUNITY - FLORIDA INSIGHT: DATA WITH MEANING

