



Flagler County – Emergency Dune Status

Washington Oaks SP north (Matanzas Shores to county line)

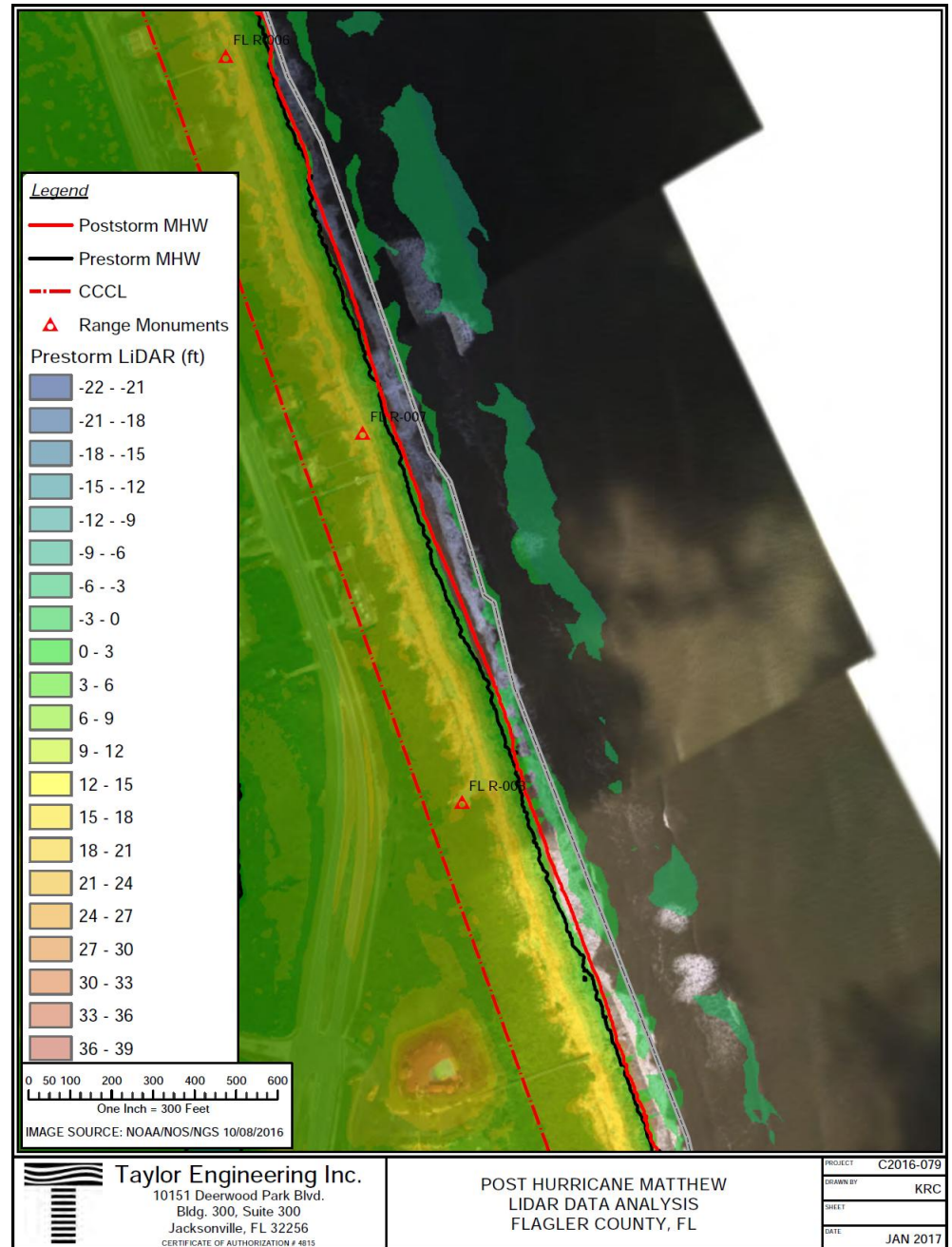


Presented by: Ken Craig, P.E.

March 9, 2017

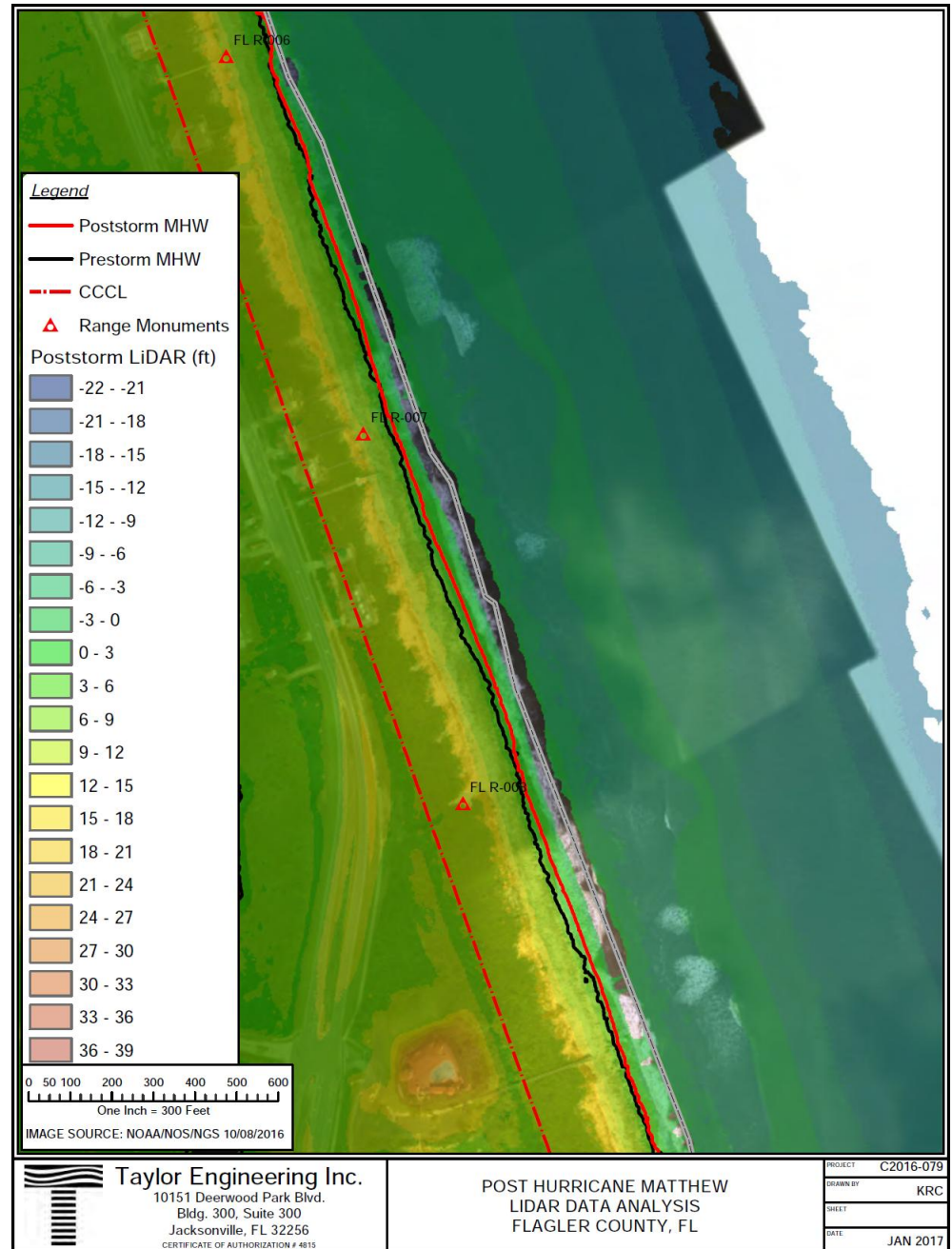
LiDAR Data

- Pre-storm conditions
- June 11, 2016



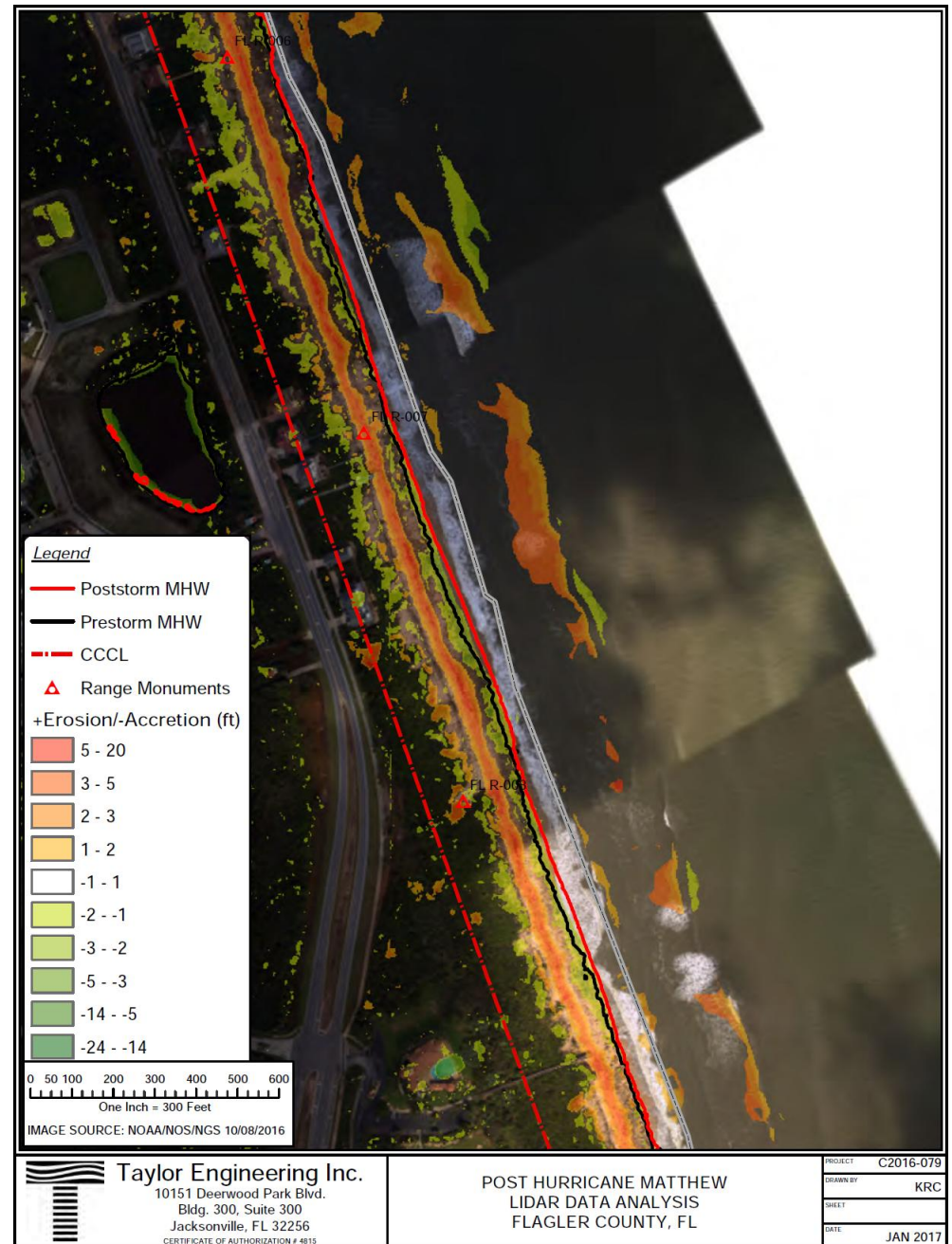
LiDAR Data

- Post-storm conditions
- November 12, 2016

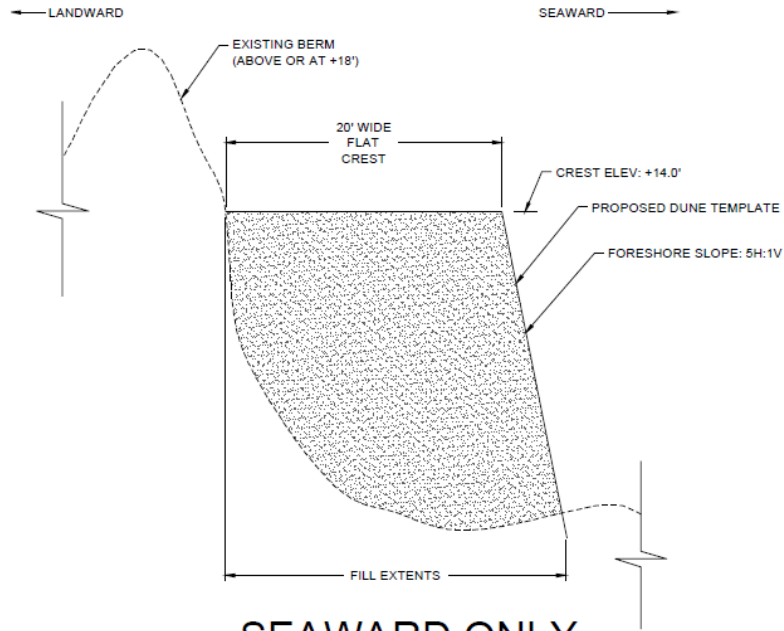


LiDAR Data

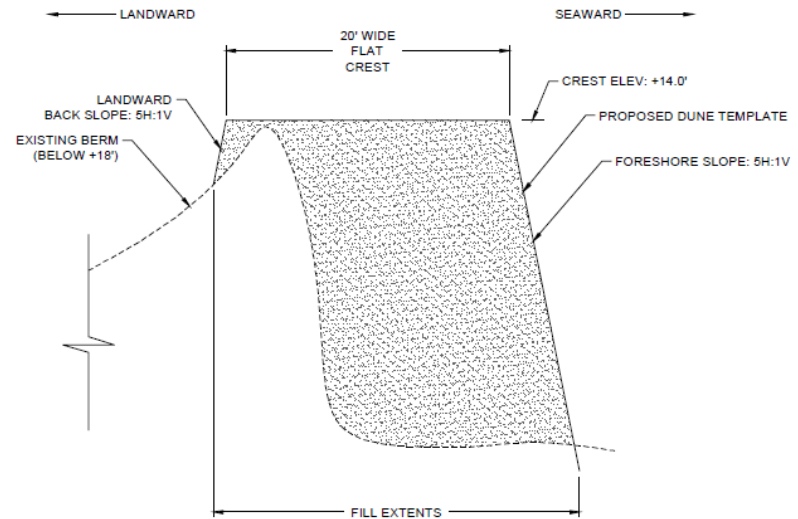
- Erosion and Accretion patterns



Dune Restoration Concept



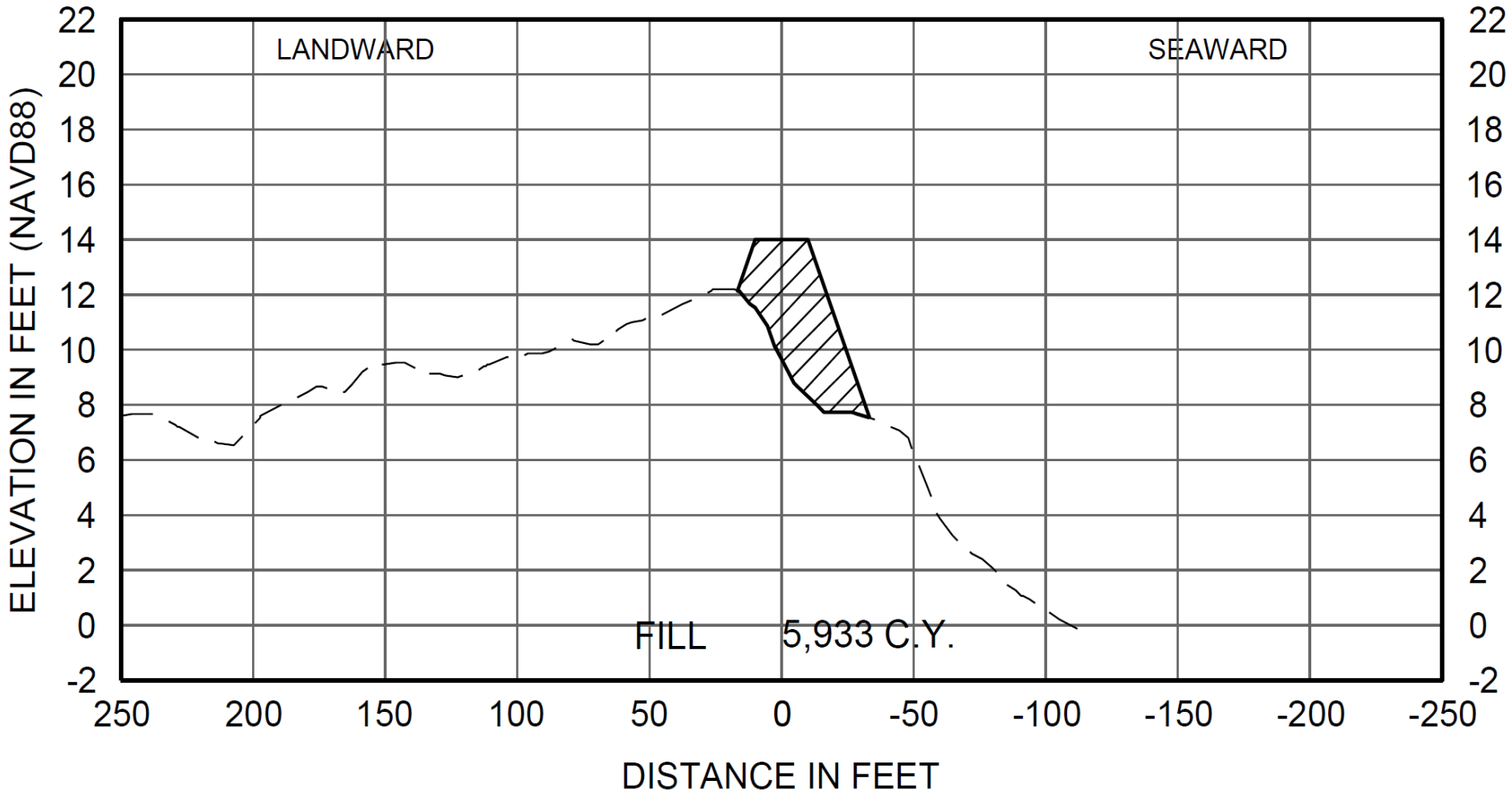
**SEAWARD ONLY
TYPICAL DUNE
RESTORATION SECTION
R-3 THRU R-17**
NOT TO SCALE



**LANDWARD & SEAWARD
TYPICAL DUNE
RESTORATION SECTION
R-3 THRU R-17**
NOT TO SCALE

Proposed Fill Section

R-MONUMENT #7





TAYLOR ENGINEERING, INC.

Delivering Leading-Edge Solutions

www.taylorengeering.com



Questions?