



# Flagler County – Emergency Dune Status

## Painters Hill / Beverly Beach (near Varn Park)

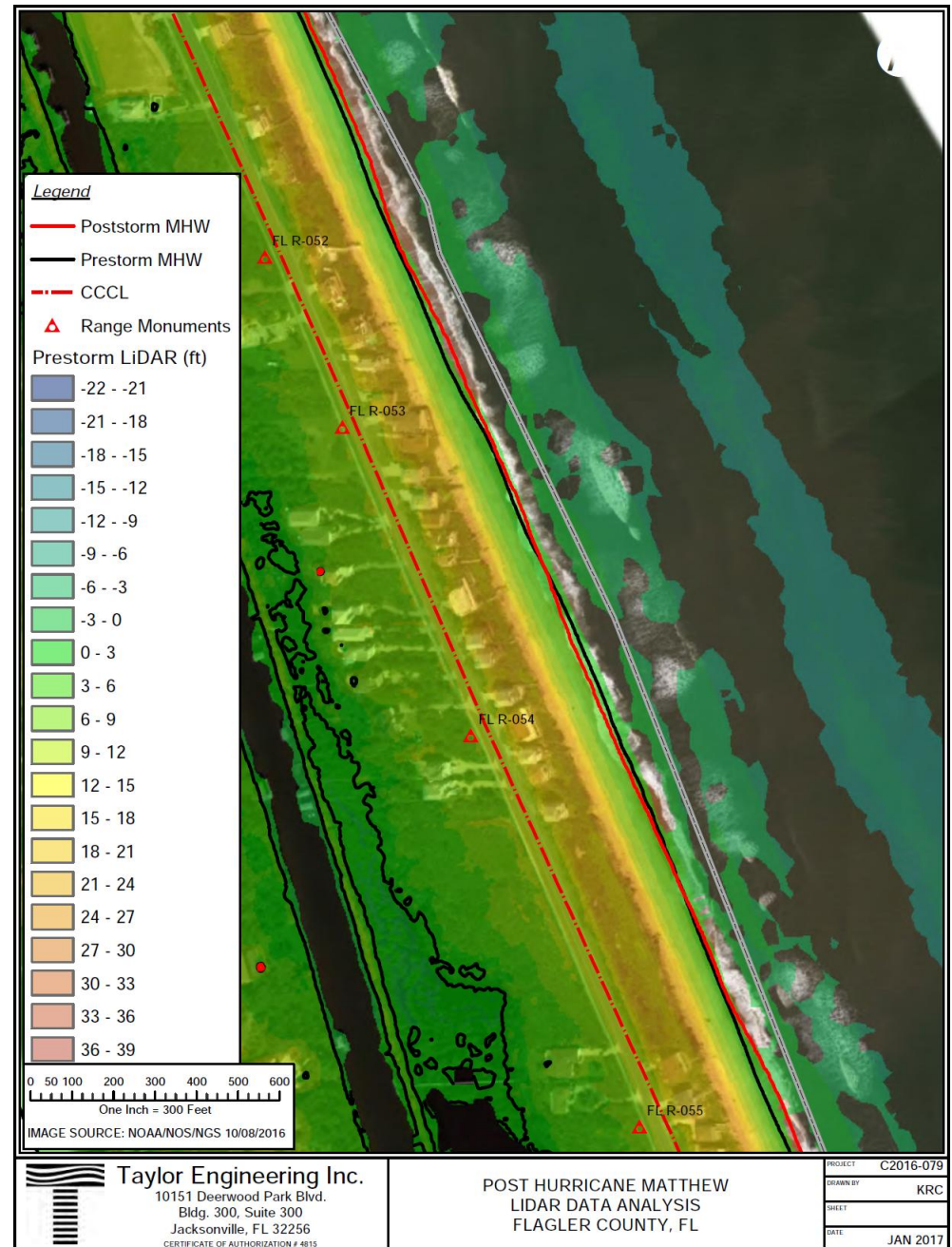


Presented by: Ken Craig, P.E.

March 9, 2017

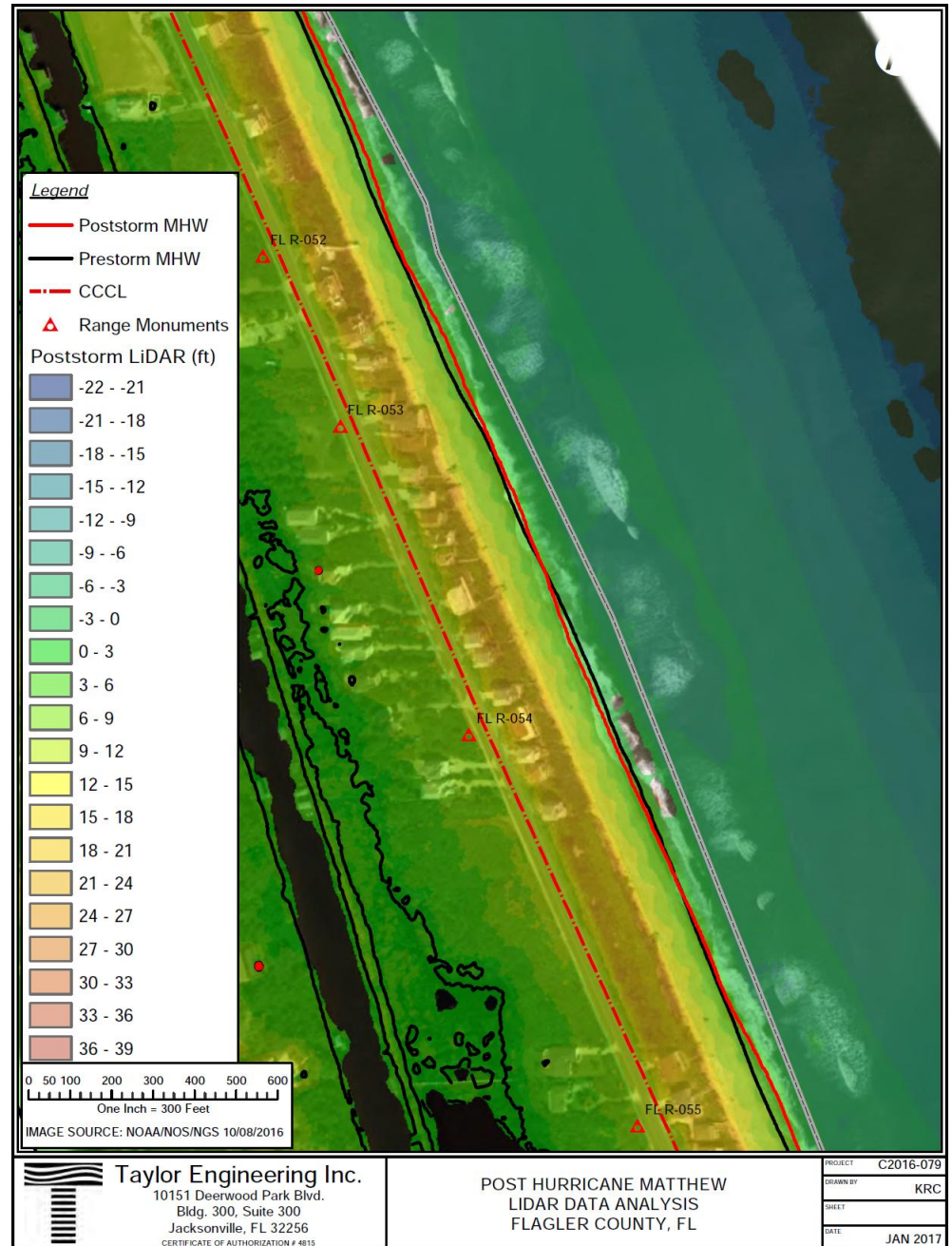
# LiDAR Data

- Pre-storm conditions
- June 11, 2016



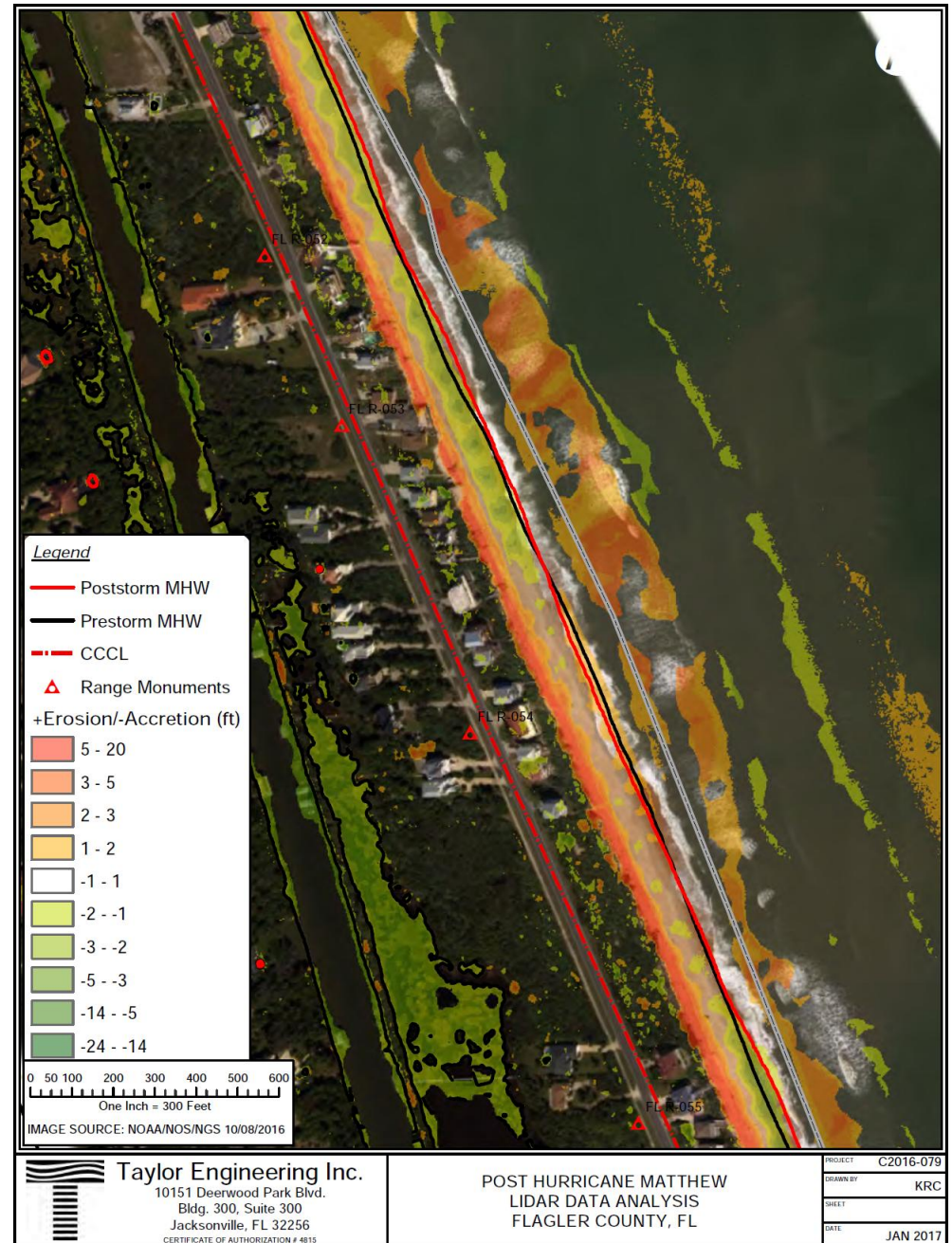
# LiDAR Data

- Post-storm conditions
- November 12, 2016

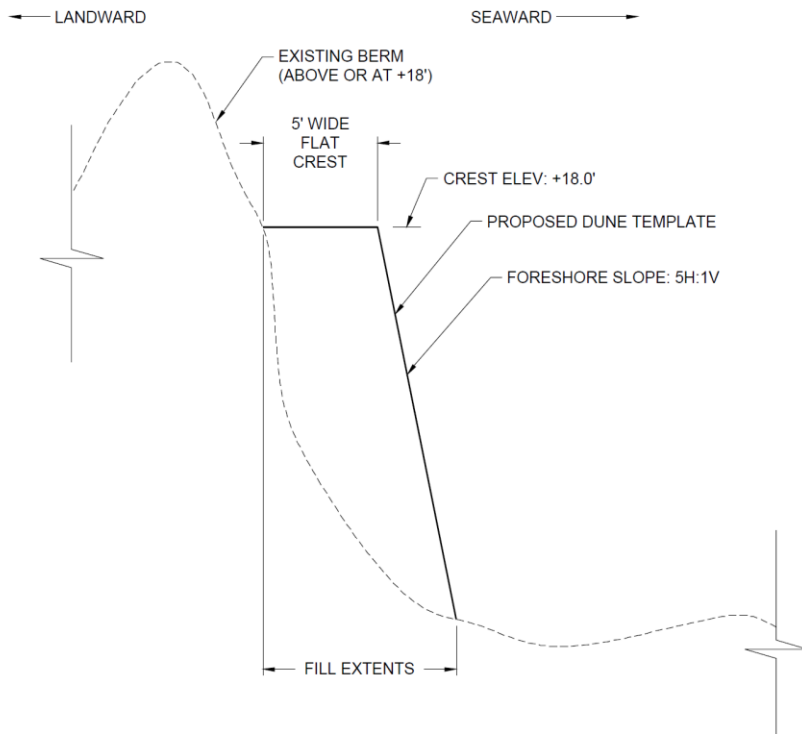


# LiDAR Data

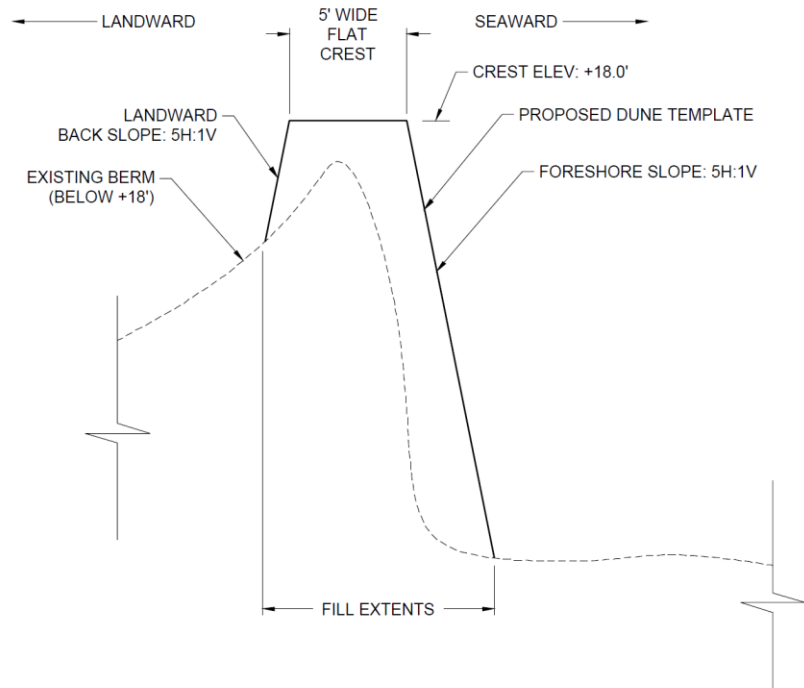
- Erosion and Accretion patterns



# Dune Restoration Concept



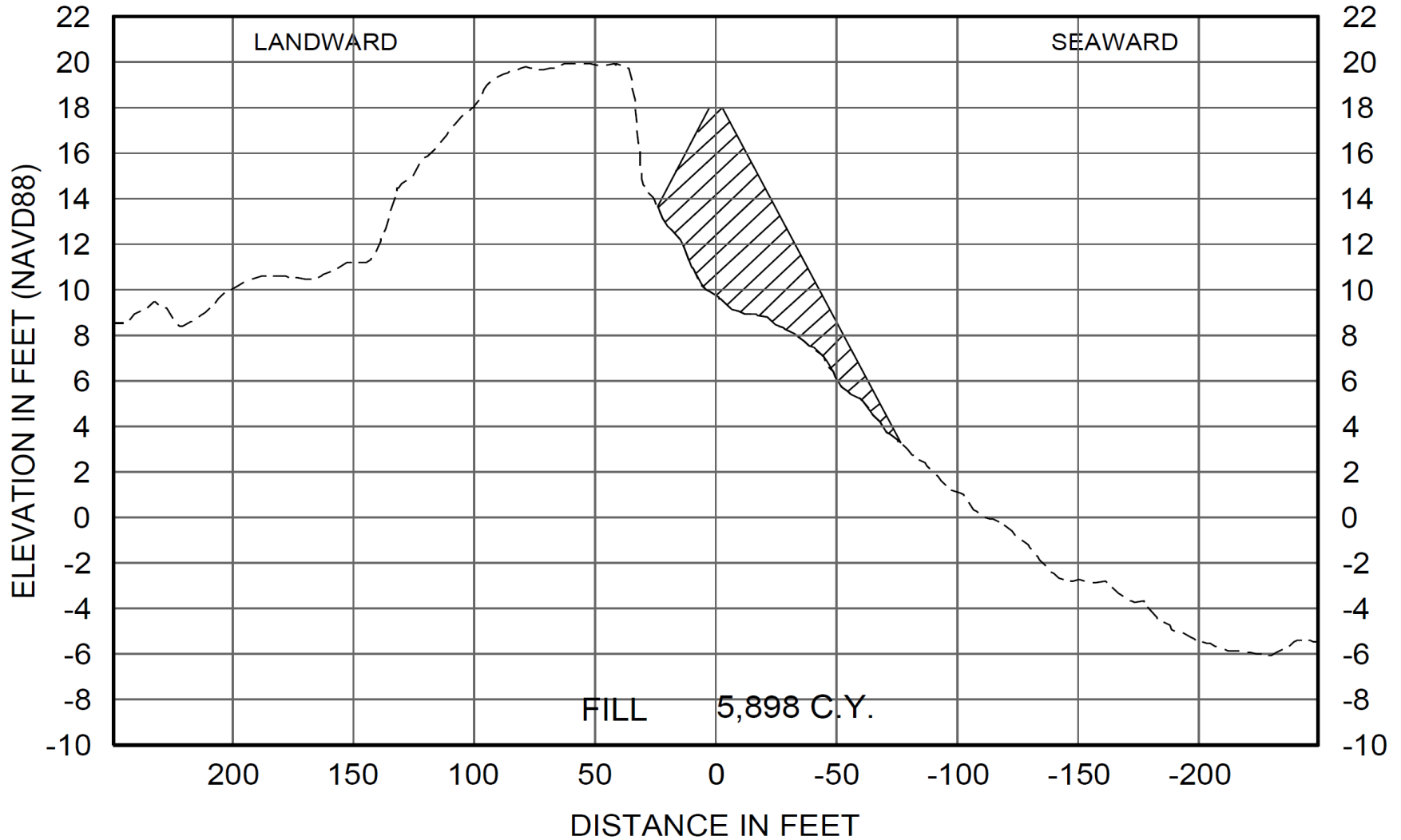
**SEAWARD ONLY  
TYPICAL DUNE  
RESTORATION SECTION  
R-23 THRU R-65**  
NOT TO SCALE



**LANDWARD & SEAWARD  
TYPICAL DUNE  
RESTORATION SECTION  
R-23 THRU R-65**  
NOT TO SCALE

# Proposed Fill Section

R-MONUMENT #53





**TAYLOR ENGINEERING, INC.**

*Delivering Leading-Edge Solutions*

[www.taylorengeering.com](http://www.taylorengeering.com)



# *Questions?*