



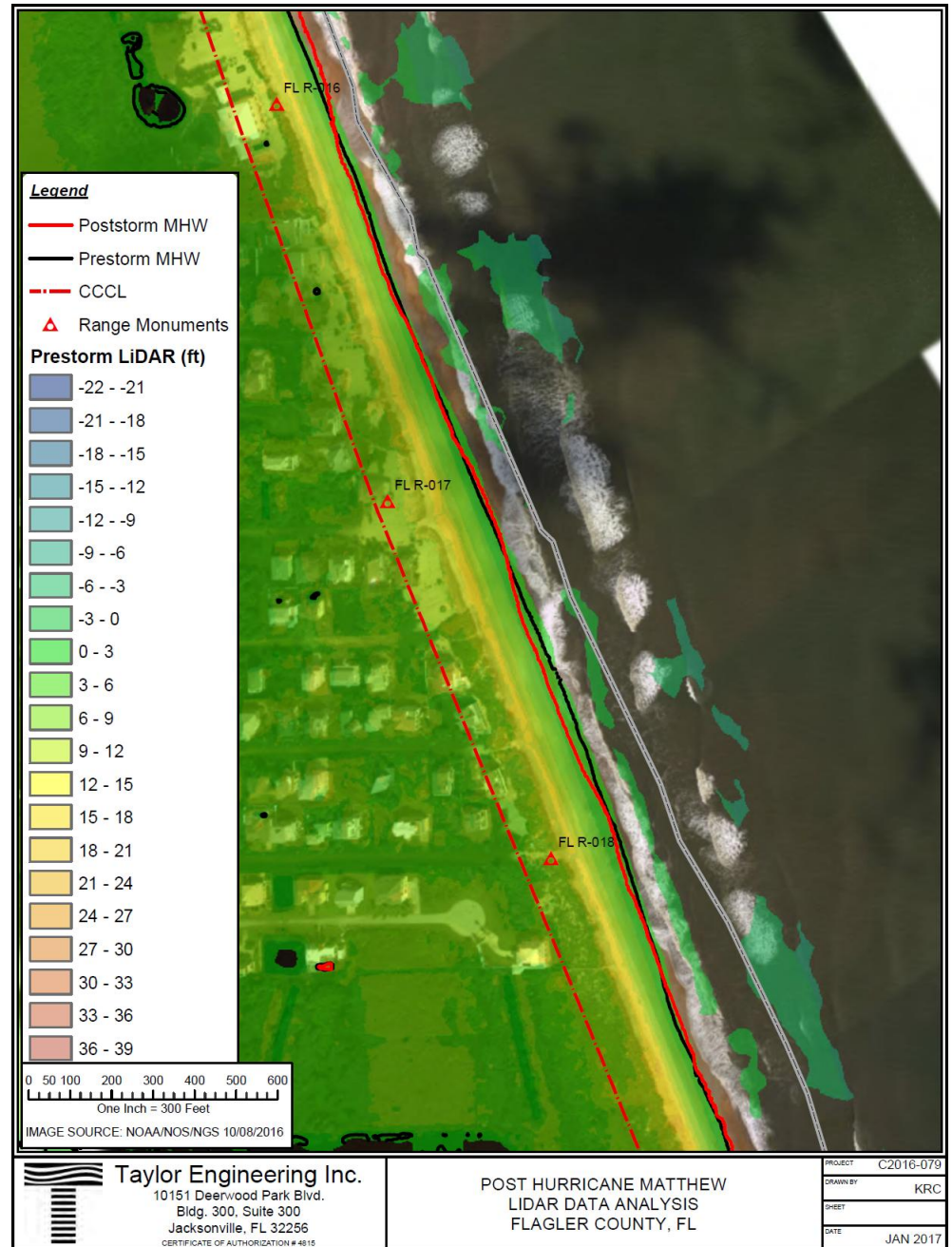
Flagler County – Emergency Dune Status

MalaCompra to
Washington Oaks SP
(Sea Colony, Armand
Beach, Marineland
Acres, Johnsons
Addition)



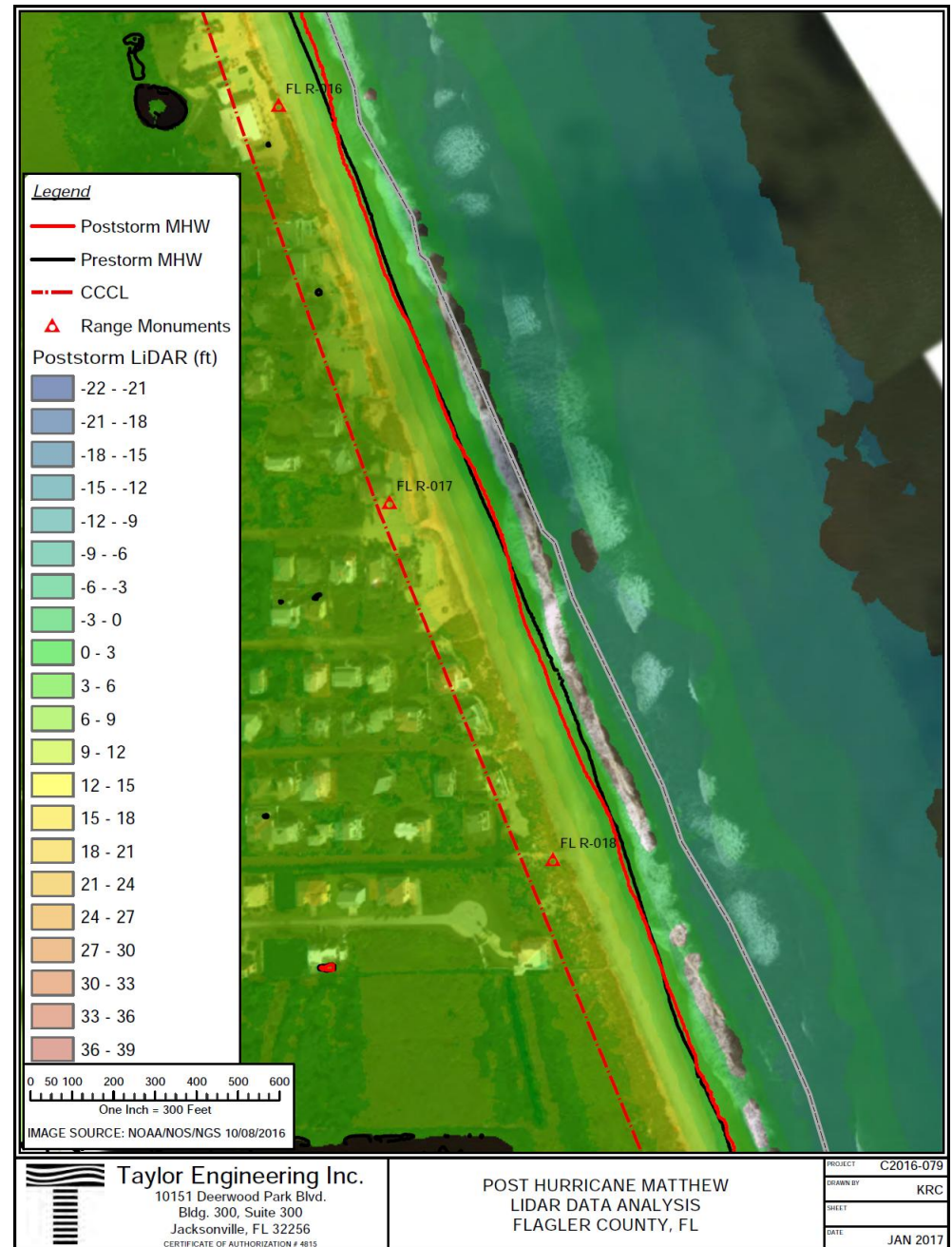
LiDAR Data

- Pre-storm conditions
- June 11, 2016



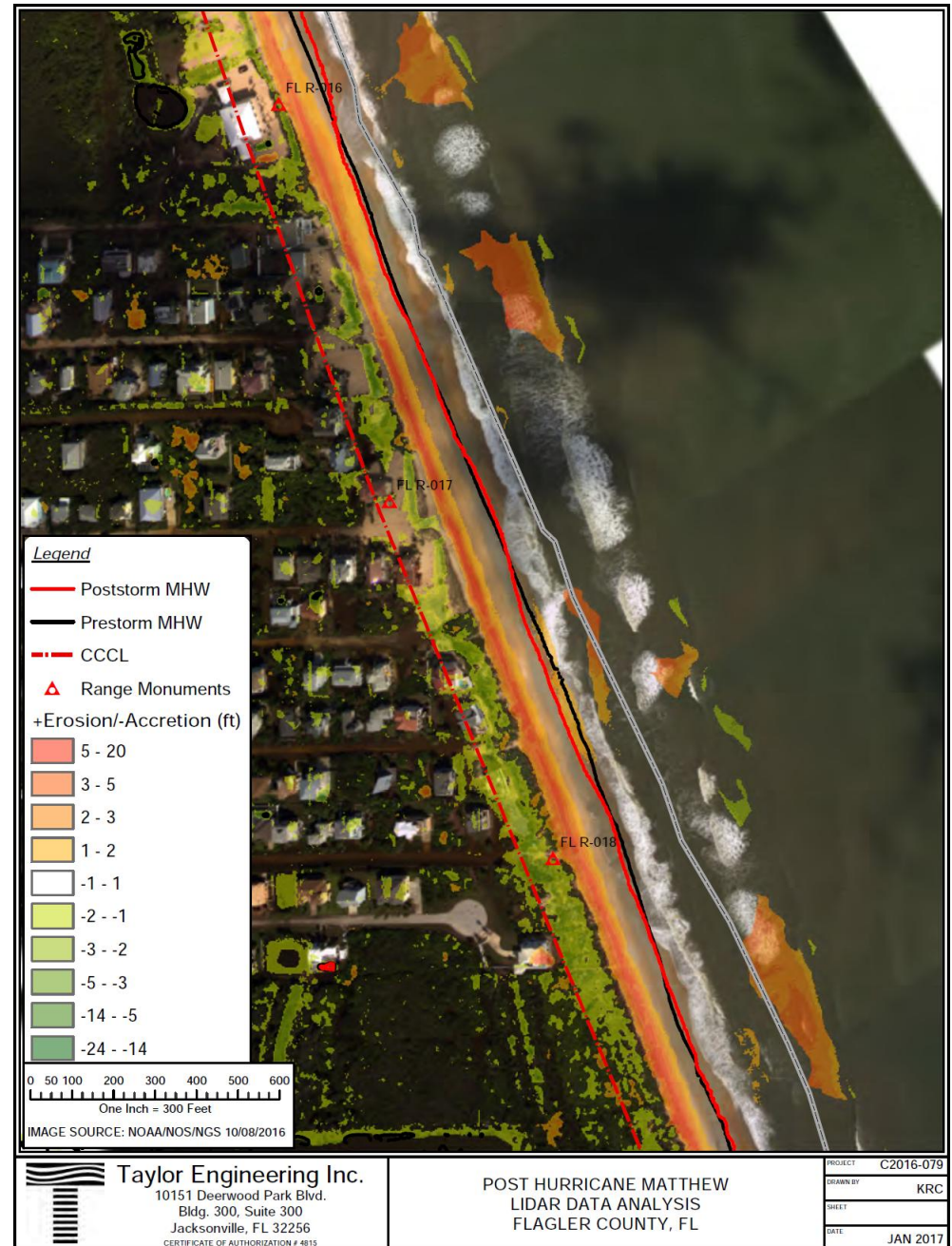
LiDAR Data

- Post-storm conditions
- November 12, 2016

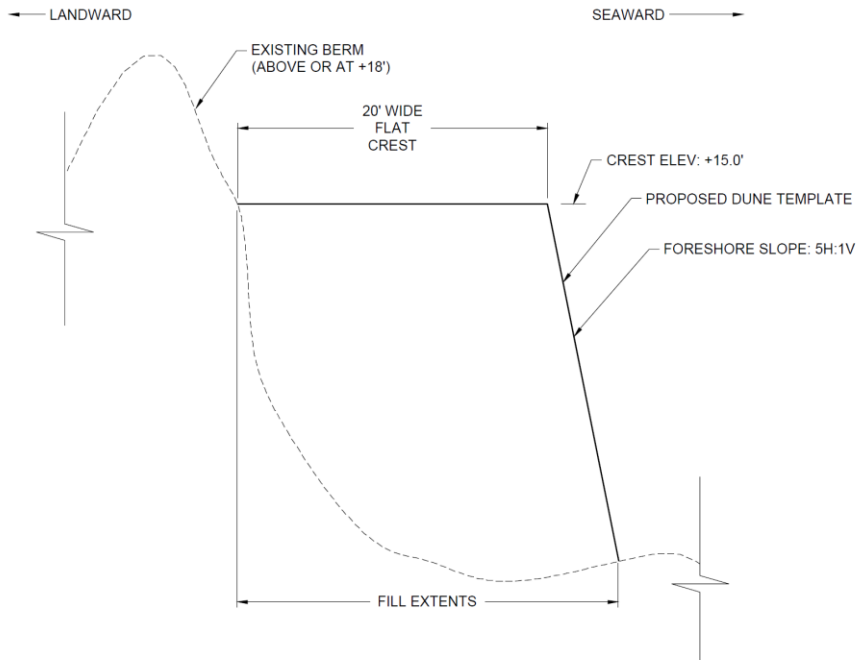


LiDAR Data

- Erosion and Accretion patterns

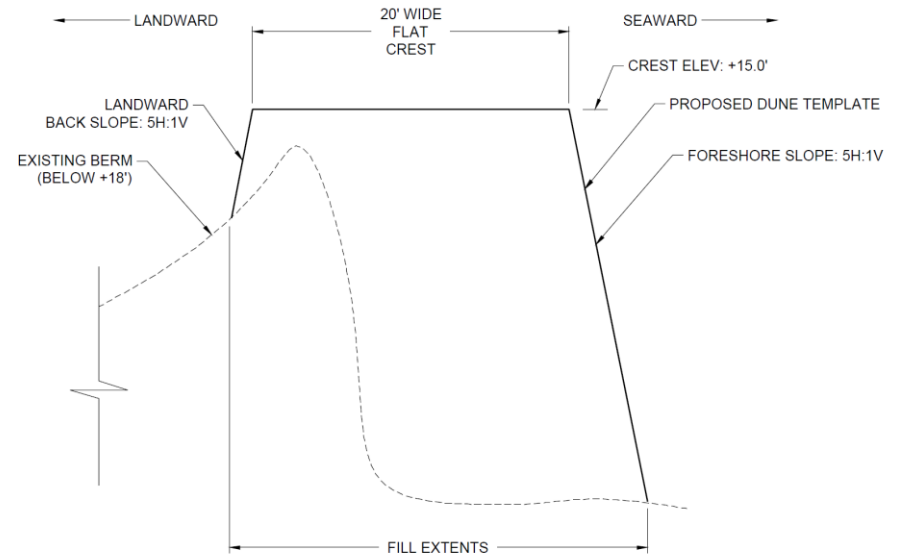


Dune Restoration Concept



**SEAWARD ONLY
TYPICAL DUNE
RESTORATION SECTION
R-17 THRU R-23**

NOT TO SCALE

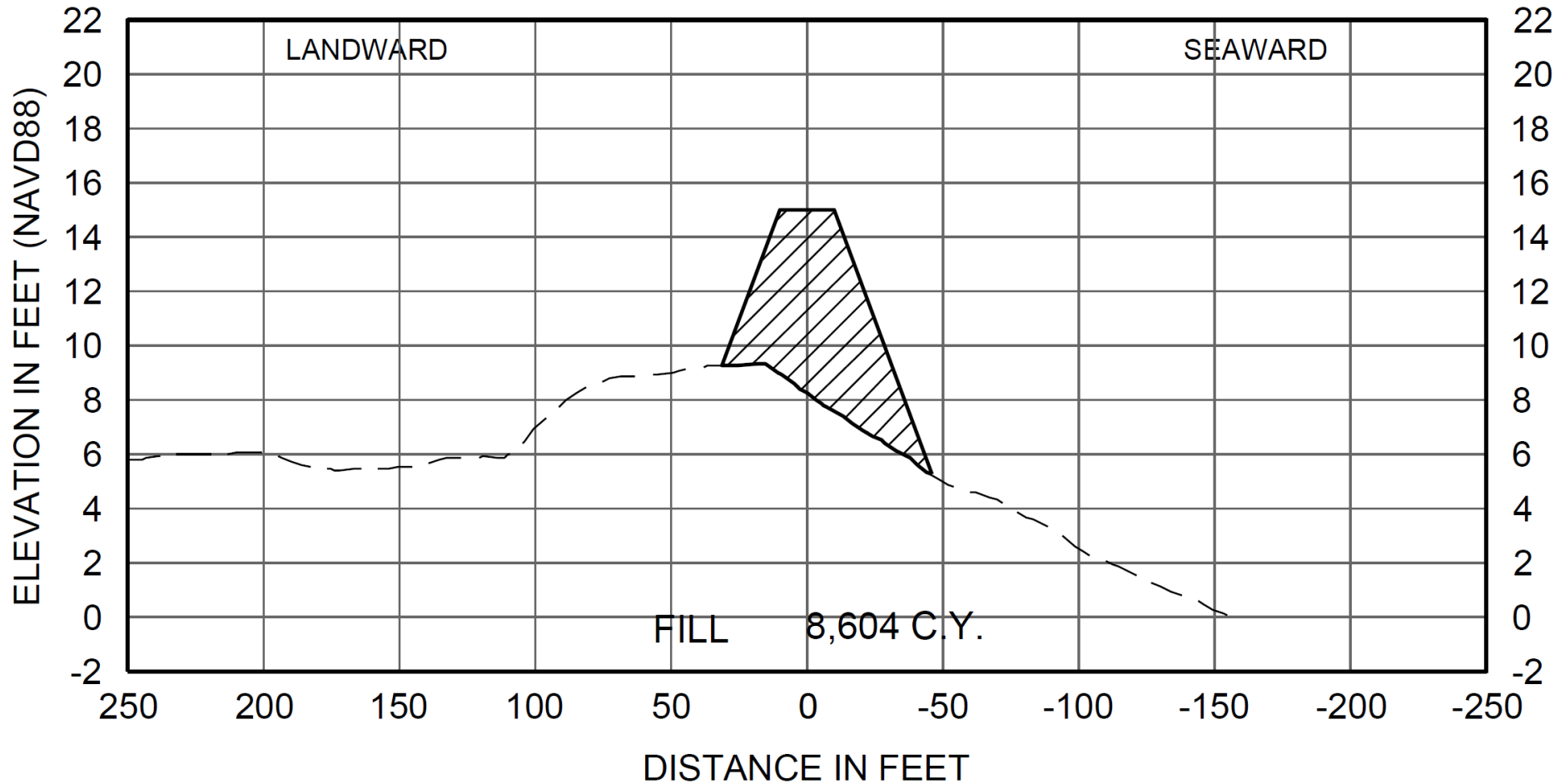


**LANDWARD & SEAWARD
TYPICAL DUNE
RESTORATION SECTION
R-17 THRU R-23**

NOT TO SCALE

Proposed Fill Section

R-MONUMENT #18





TAYLOR ENGINEERING, INC.
Delivering Leading-Edge Solutions

www.taylorengeering.com



Questions?