



Flagler County – Emergency Dune Status

Painters Hill / Beverly Beach (near Flagler Beach)

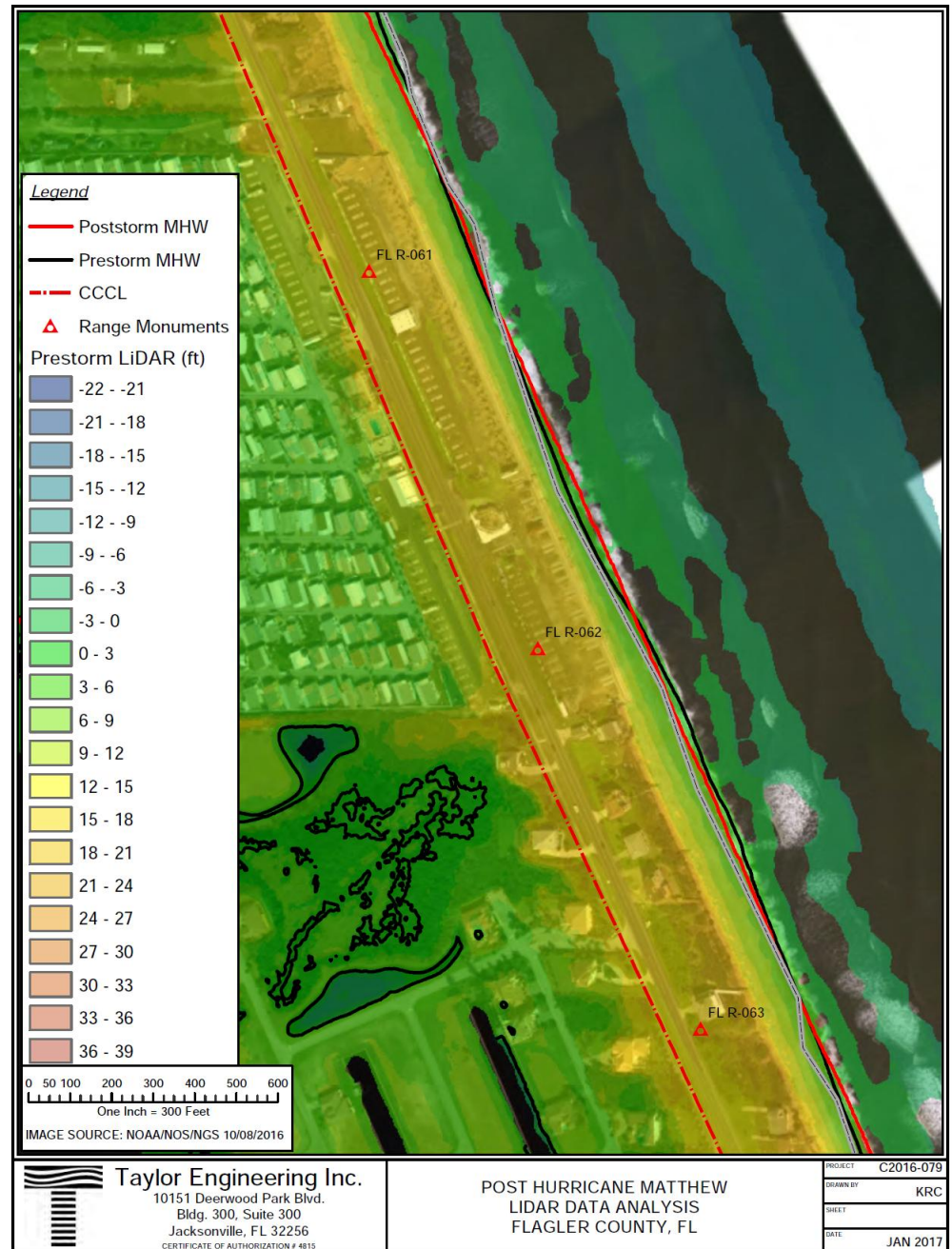


Presented by: Ken Craig, P.E.

March 9, 2017

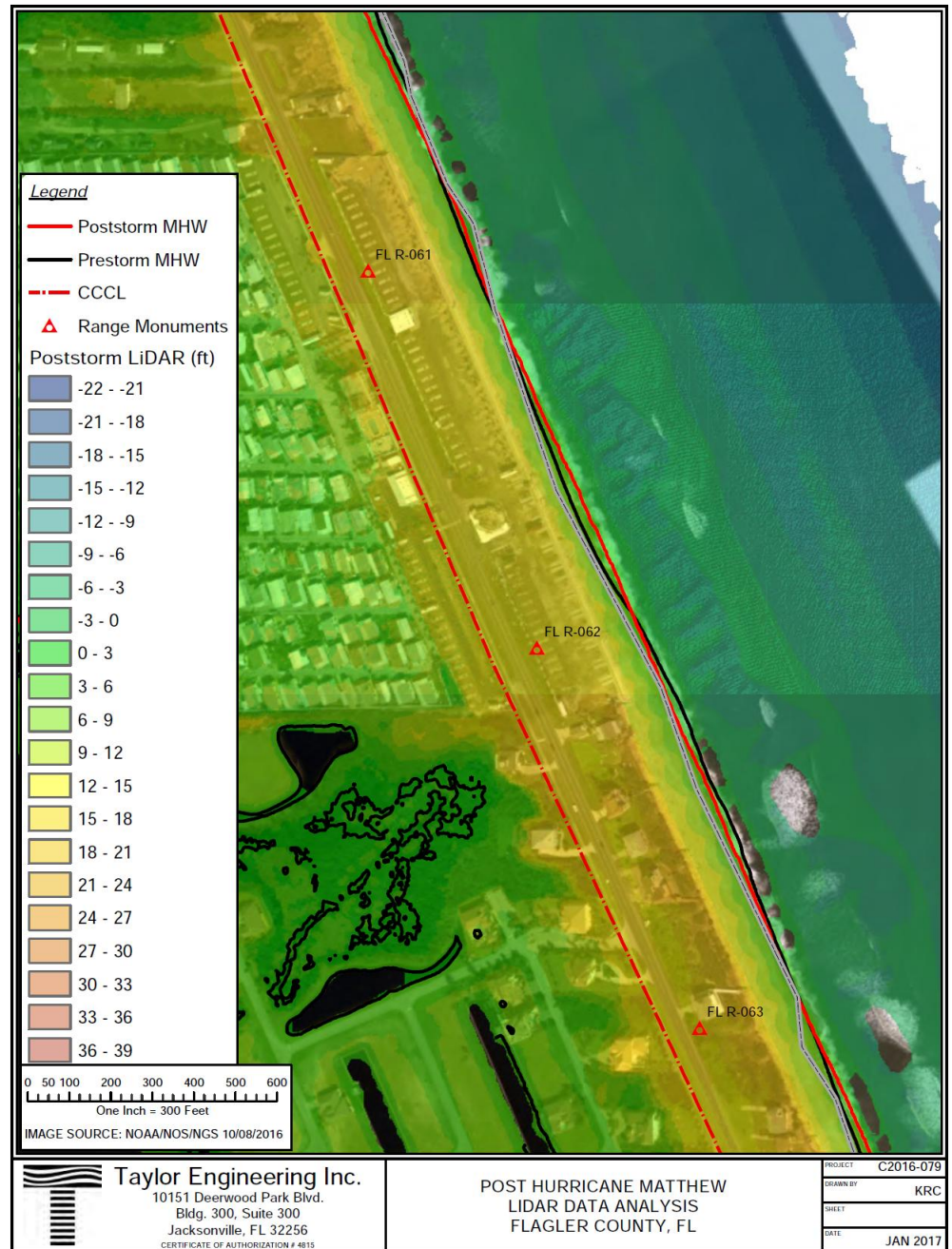
LiDAR Data

- Pre-storm conditions
- June 11, 2016



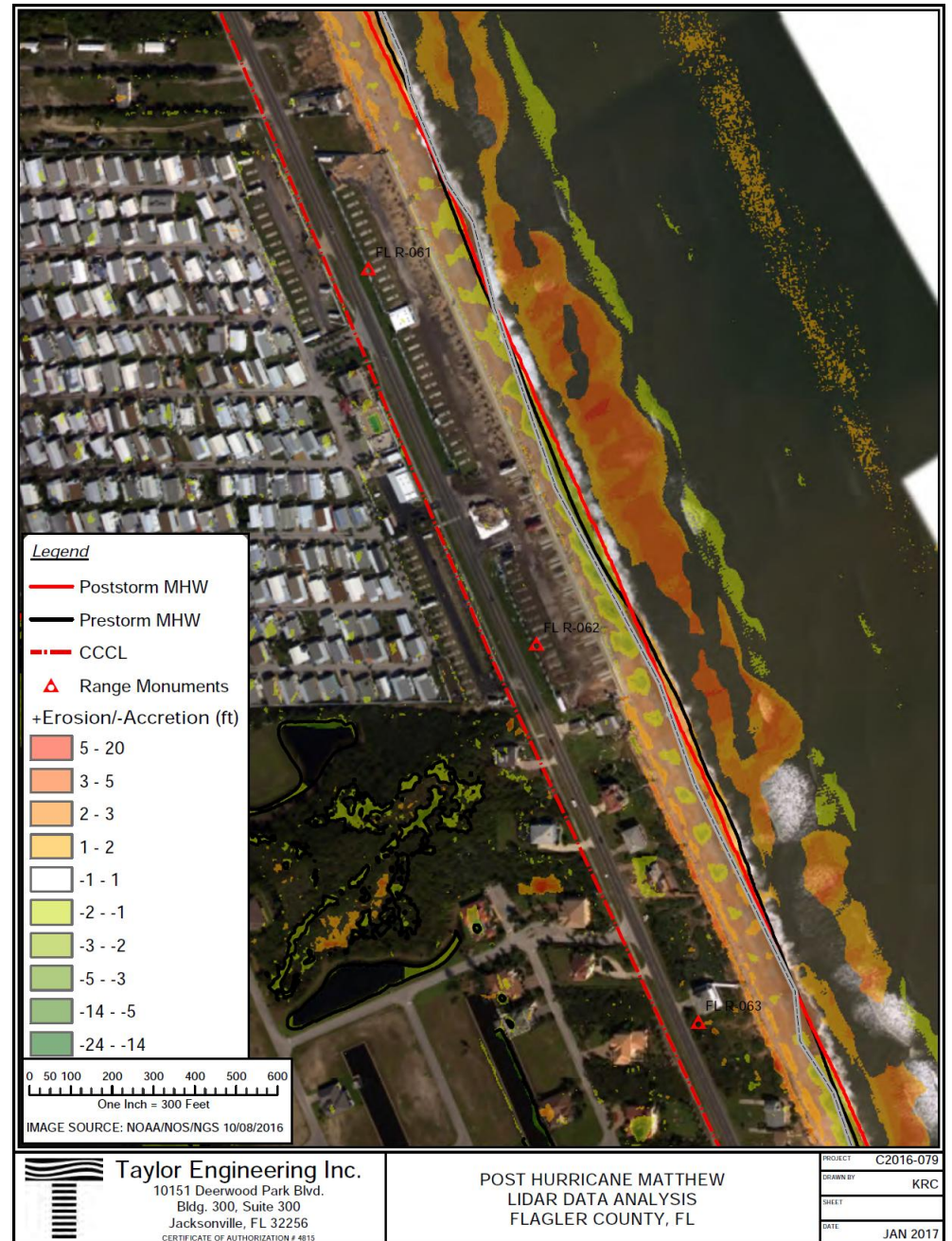
LiDAR Data

- Post-storm conditions
- November 12, 2016

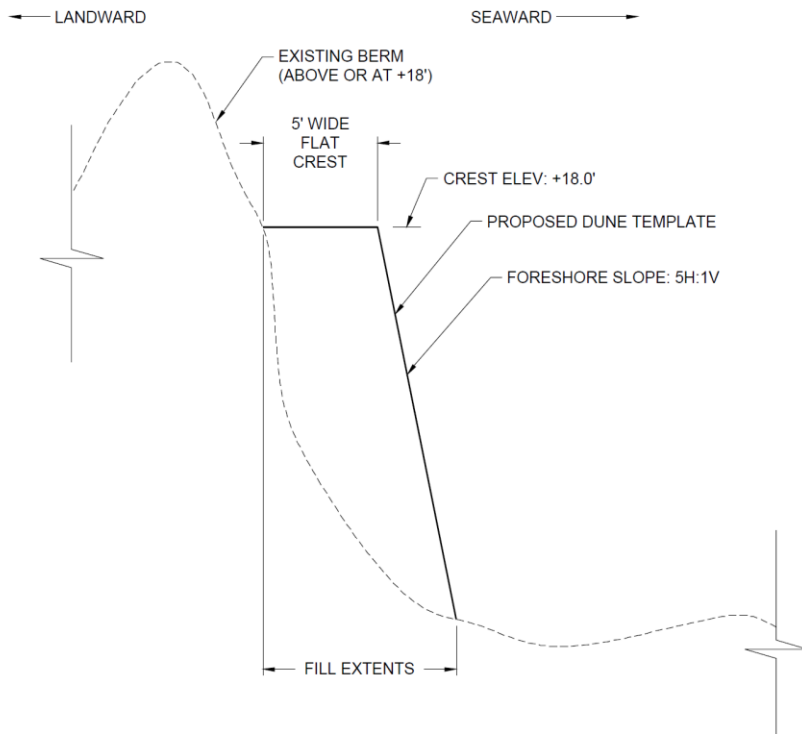


LiDAR Data

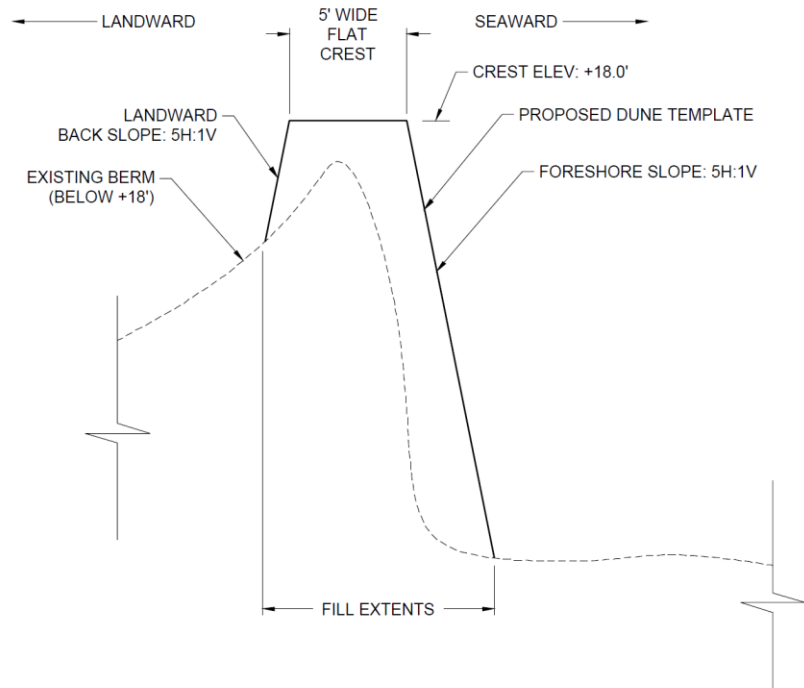
- Erosion and Accretion patterns



Dune Restoration Concept

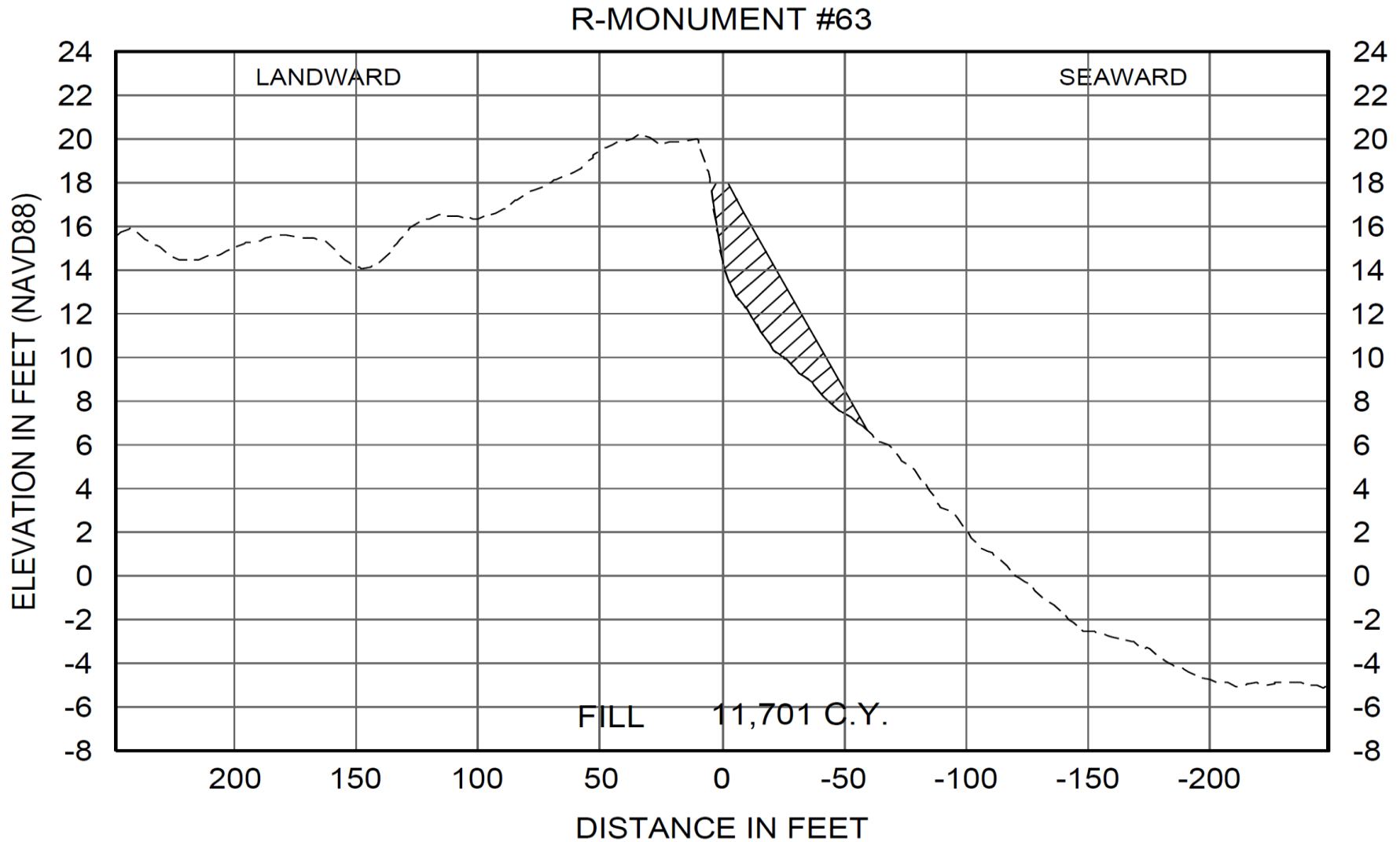


**SEAWARD ONLY
TYPICAL DUNE
RESTORATION SECTION
R-23 THRU R-65**
NOT TO SCALE



**LANDWARD & SEAWARD
TYPICAL DUNE
RESTORATION SECTION
R-23 THRU R-65**
NOT TO SCALE

Proposed Fill Section





TAYLOR ENGINEERING, INC.
Delivering Leading-Edge Solutions

www.taylorengeering.com



Questions?