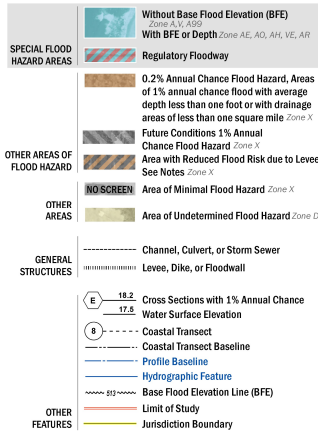


FLOOD HAZARD INFORMATION

SEE FIS REPORT FOR DETAILED LEGEND AND INDEX MAP FOR FIRM PANEL LAYOUT
THE INFORMATION DEPICTED ON THIS MAP AND SUPPORTING DOCUMENTATION ARE ALSO AVAILABLE IN DIGITAL FORMAT AT [HTTP://MSC.FEMA.GOV](http://MSC.FEMA.GOV)



NOTES TO USERS

For information and questions about this Flood Insurance Rate Map (FIRM), available products associated with this FIRM, including historic versions, the current map date for each FIRM panel, how to order products, or the National Flood Insurance Program (NFIP) in general, please call the FEMA Map Information eXchange at 1-877-FEMA-5848 (1-877-368-2621), or visit the FEMA Flood Map Service Center website at <http://msc.fema.gov>. Available products may include previously issued Letters of Map Change, a Flood Insurance Study Report, and/or digital versions of this map. Many of these products can be ordered or obtained directly from the website.

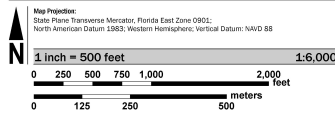
Communities annexing land on adjacent FIRM panels must obtain a current copy of the adjacent panel as well as the current FIRM index. These may be ordered directly from the Flood Map Service Center at the number listed above.

For community and countywide map dates refer to the Flood Insurance Study Report for this jurisdiction.

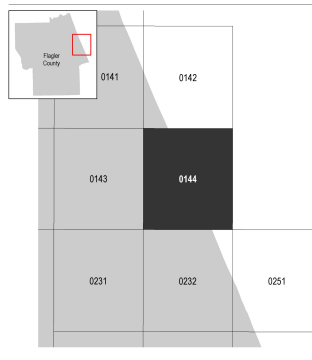
To determine if flood insurance is available in this community, contact your insurance agent or call the National Flood Insurance Program at 1-800-638-6020.

Base map information shown on this FIRM was provided in digital format by the Flagler County GIS Department, dated 2015; the U.S. Census Bureau, dated 2010; the U.S. Fish and Wildlife Service, dated 2010; the Florida Resources and Environmental Analysis Center, dated 2005; the U.S. Department of Agriculture Farm Service Agency, dated 2010; and FEMA, dated 2008.

SCALE



PANEL LOCATOR



FEDERAL EMERGENCY MANAGEMENT AGENCY

NATIONAL FLOOD INSURANCE PROGRAM

FLOOD INSURANCE RATE MAP

FLAGLER COUNTY, FLORIDA
 and Incorporated Areas
 PANEL 144 of 345

FEMA

Panel Contains:

COMMUNITY	NUMBER	PANEL	SUFFIX
BEVERLY BEACH, TOWN OF	120569	0144	E
FLAGLER BEACH, CITY OF	120087	0144	E
FLAGLER COUNTY	120085	0144	E

VERSION NUMBER 2.3.3.2
 MAP NUMBER 12035C0144E
 MAP REVISED JUNE 6, 2018