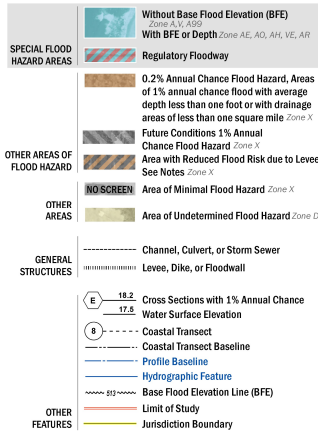


FLOOD HAZARD INFORMATION

SEE FIS REPORT FOR DETAILED LEGEND AND INDEX MAP FOR FIRM PANEL LAYOUT
THE INFORMATION DEPICTED ON THIS MAP AND SUPPORTING DOCUMENTATION ARE ALSO AVAILABLE IN DIGITAL FORMAT AT [HTTP://MSC.FEMA.GOV](http://MSC.FEMA.GOV)



NOTES TO USERS

For information and questions about this Flood Insurance Rate Map (FIRM), available products associated with this FIRM, including historic versions, the current map date for each FIRM panel, how to order products, or the National Flood Insurance Program (NFIP) in general, please call the FEMA Map Information eXchange at 1-877-FEMA-MAP or 877-336-2021, or visit the FEMA Flood Map Service Center website at <http://msc.fema.gov>. Available products may include previously issued Letters of Map Change, a Flood Insurance Study Report, and/or digital versions of this map. Many of these products can be ordered or obtained directly from the website.

Communities annexing land on adjacent FIRM panels must obtain a current copy of the adjacent panel as well as the current FIRM index. These may be obtained directly from the Flood Map Service Center at the number listed above.

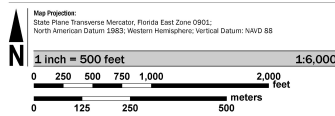
For community and countywide map dates refer to the Flood Insurance Study Report for this jurisdiction.

To determine if flood insurance is available in this community, contact your insurance agent or call the National Flood Insurance Program at 1-800-638-6020.

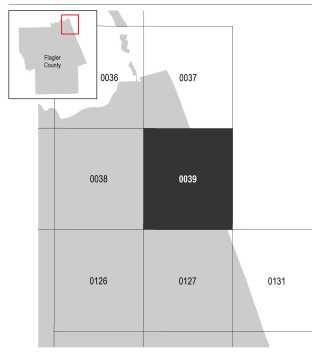
Base map information shown on this FIRM was provided in digital format by the Flagler County GIS Department, dated 2015; the U.S. Census Bureau, dated 2010; the U.S. Fish and Wildlife Service, dated 2015; the Florida Resources and Environmental Analysis Center, dated 2005; the U.S. Department of Agriculture Farm Service Agency, dated 2013; and FEMA, dated 2008.

COASTAL BARRIER RESOURCES SYSTEM (CBRS)
 This map includes approximate boundaries of the CBRS for informational purposes only. Flood insurance is not available within CBRS areas for structures that are newly built or substantially improved on or after the date(s) indicated on the map. For more information see <http://www.fws.gov/cbrs>, the FIS Report, or call the U.S. Fish and Wildlife Service Customer Service Center at 1-800-344-6443.

SCALE



PANEL LOCATOR



FEMA
 National Flood Insurance Program

NATIONAL FLOOD INSURANCE PROGRAM
 FLOOD INSURANCE RATE MAP

FLAGLER COUNTY, FLORIDA
 and Incorporated Areas
 PANEL 39 of 345

Panel Contains:
 COMMUNITY FLAGLER COUNTY
 NUMBER 120085
 PANEL SUFFIX 0039
 E

VERSION NUMBER 2.3.3.2
 MAP NUMBER 12035C0039E
 MAP REVISED JUNE 6, 2018