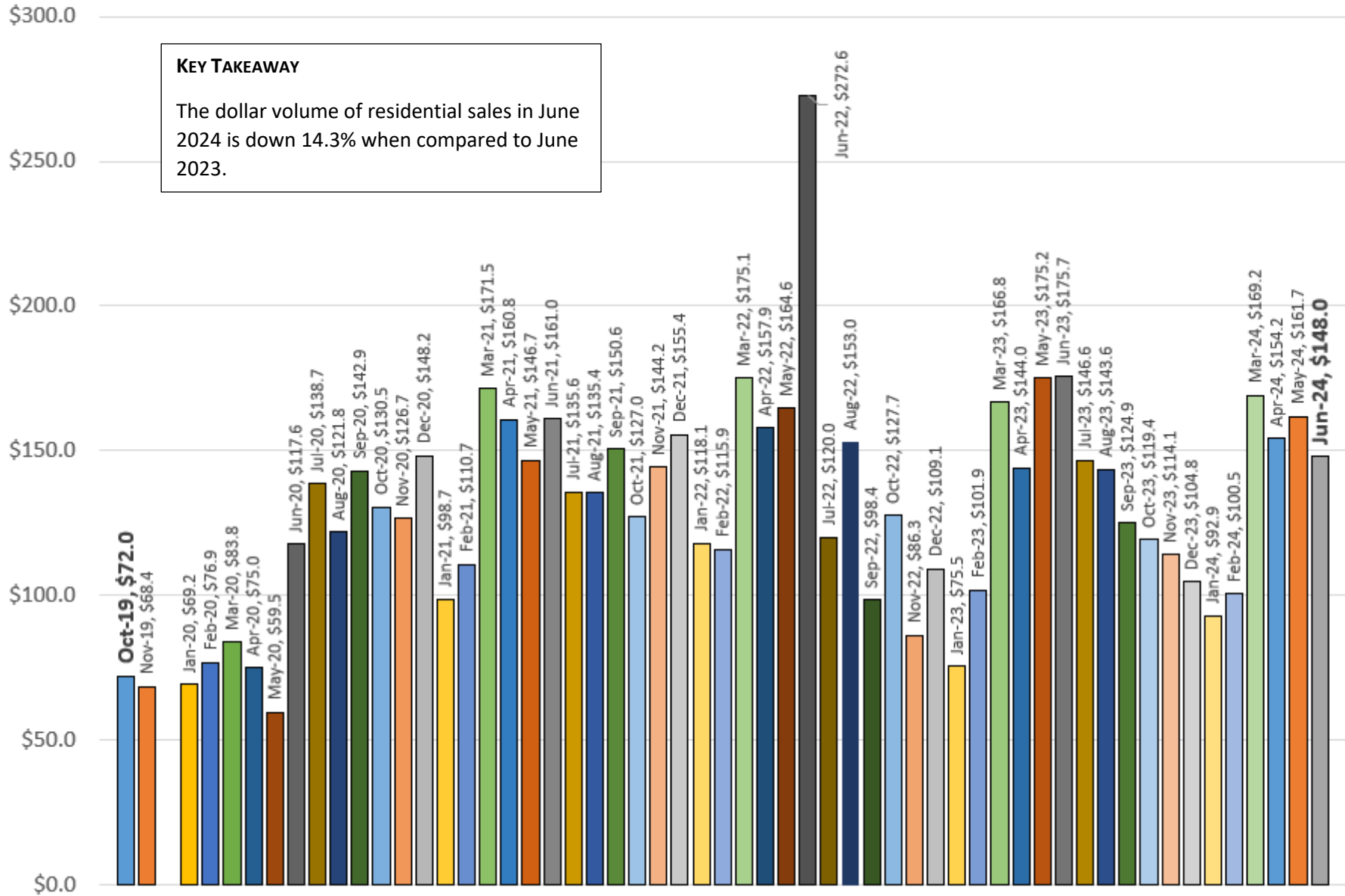


RESIDENTIAL DOLLAR VOLUME OF SALES IN MILLIONS | FLAGLER COUNTY

DATA SOURCE: FLAGLER COUNTY ASSOCIATION OF REALTORS

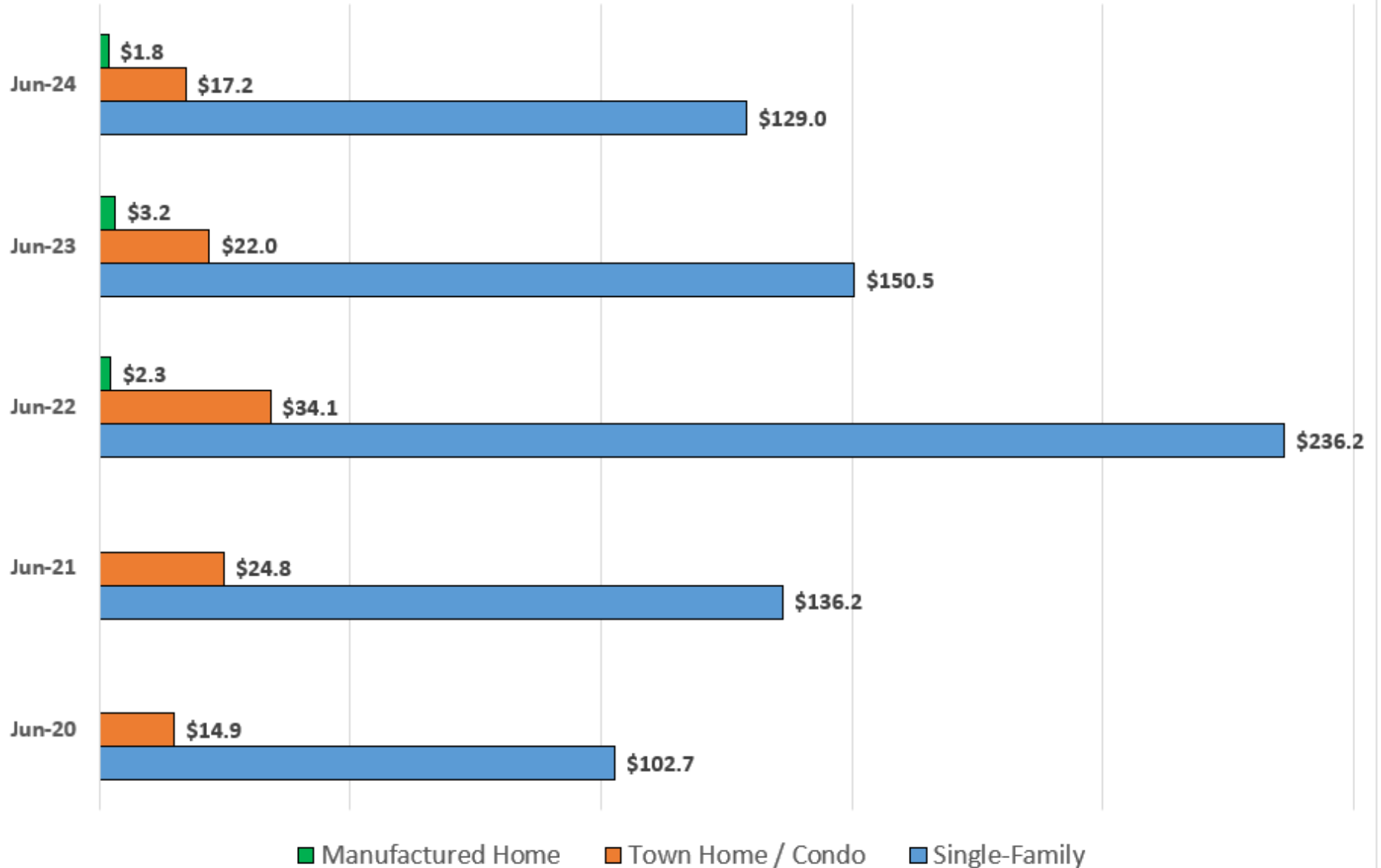
KEY TAKEAWAY

The dollar volume of residential sales in June 2024 is down 14.3% when compared to June 2023.



RESIDENTIAL REAL ESTATE SALES: VOLUME IN MILLIONS

Data Source: Flagler County Association of Realtors, Inc

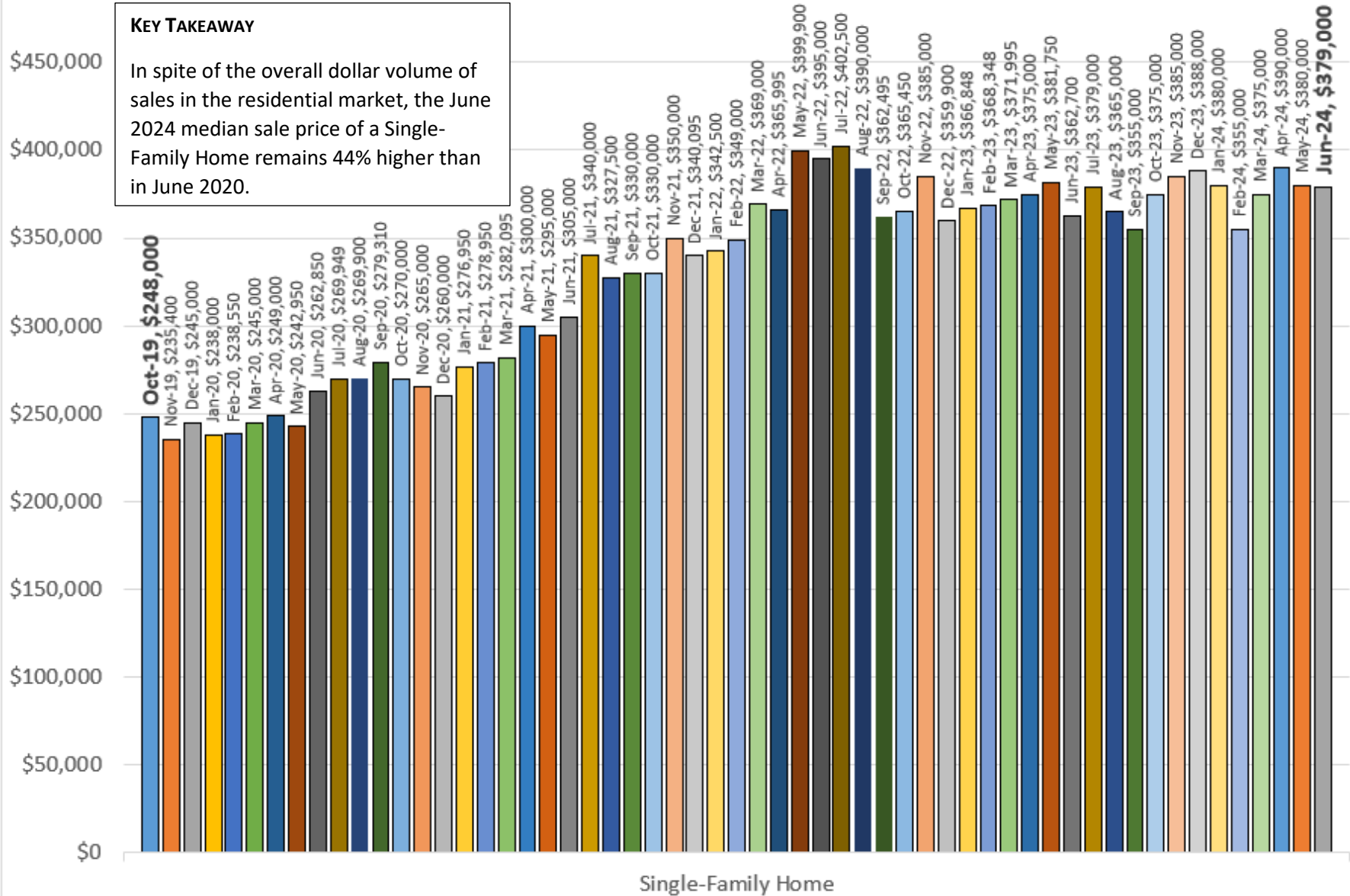


FLAGLER COUNTY | SINGLE FAMILY MEDIAN SALE PRICE

DATA SOURCE: Flagler County Association of Realtors, Inc

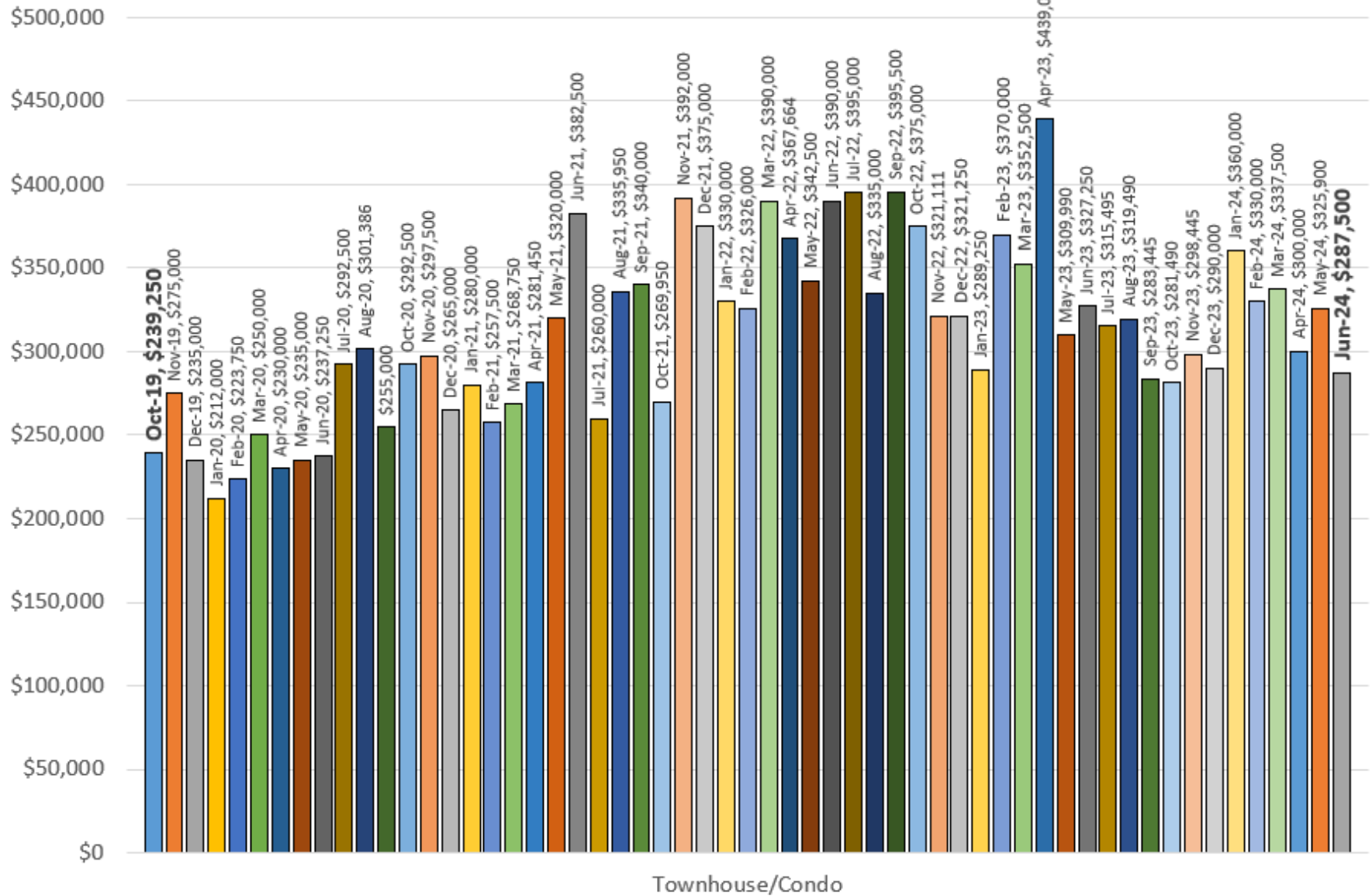
KEY TAKEAWAY

In spite of the overall dollar volume of sales in the residential market, the June 2024 median sale price of a Single-Family Home remains 44% higher than in June 2020.



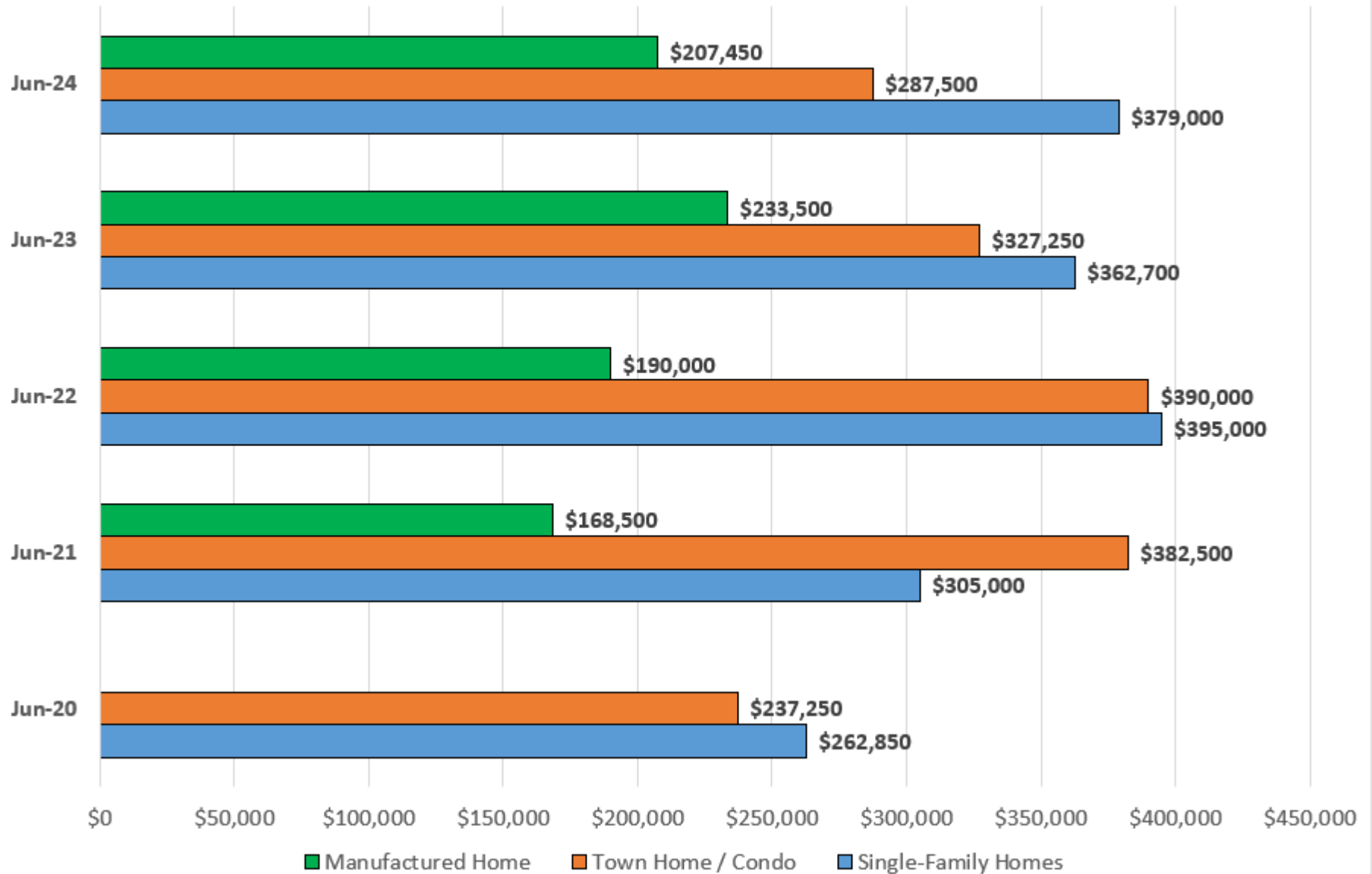
FLAGLER COUNTY | TOWNHOME / CONDO MEDIAN SALE PRICE

DATA SOURCE: Flagler County Association of Realtors, Inc



RESIDENTIAL REAL ESTATE: MEDIAN SALE PRICE

Data Source: Flagler County Association of Realtors, Inc.

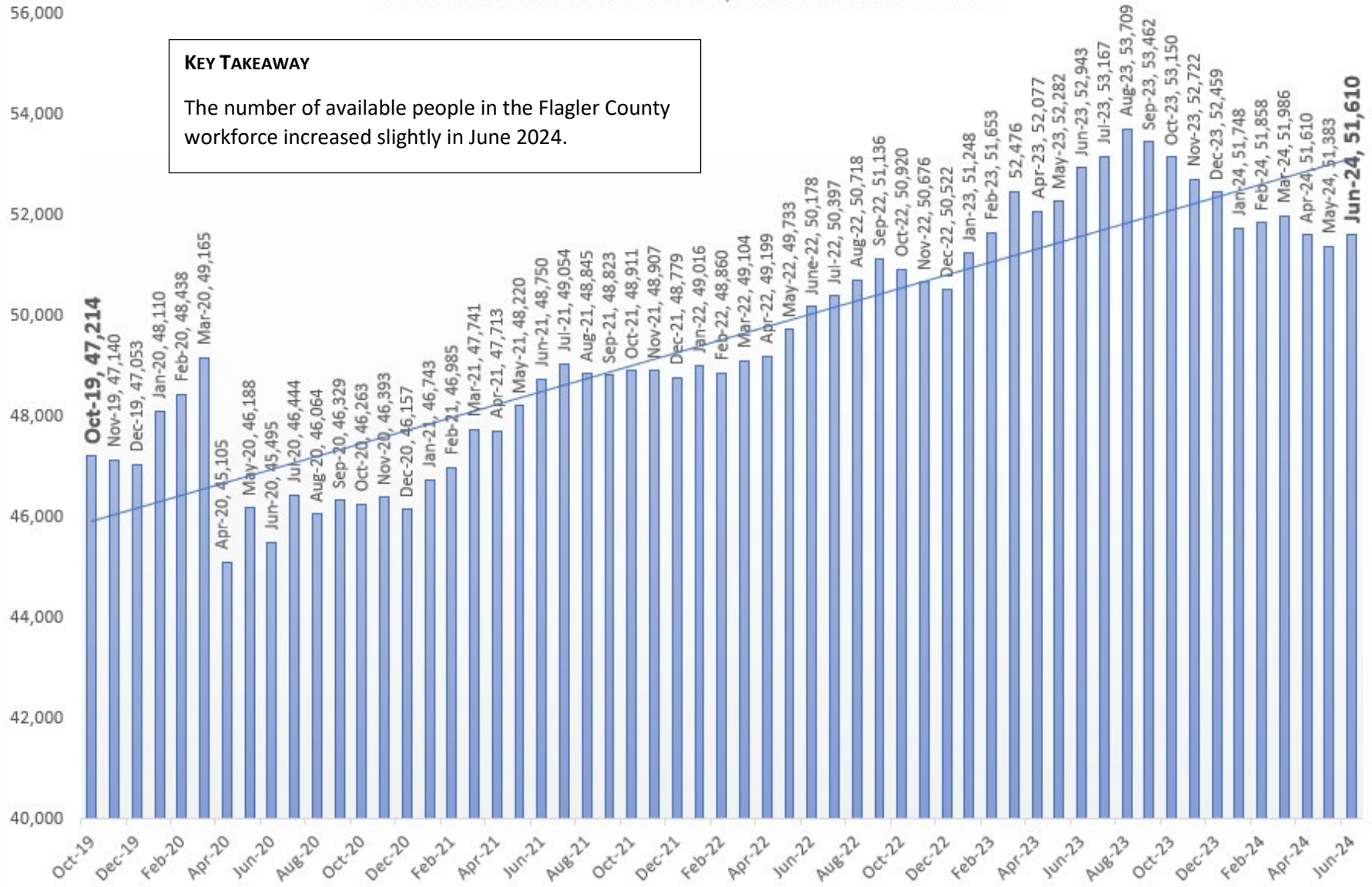


LABOR FORCE RESIDING IN FLAGLER COUNTY

DATA SOURCE: U.S. DEPARTMENT OF LABOR, BUREAU OF LABOR STATISTICS, LOCAL AREA UNEMPLOYMENT STATISTIC PROGRAM IN COOPERATION WITH THE FLORIDA DEPARTMENT OF COMMERCE, BUREAU OF WORKFORCE STATISTICS

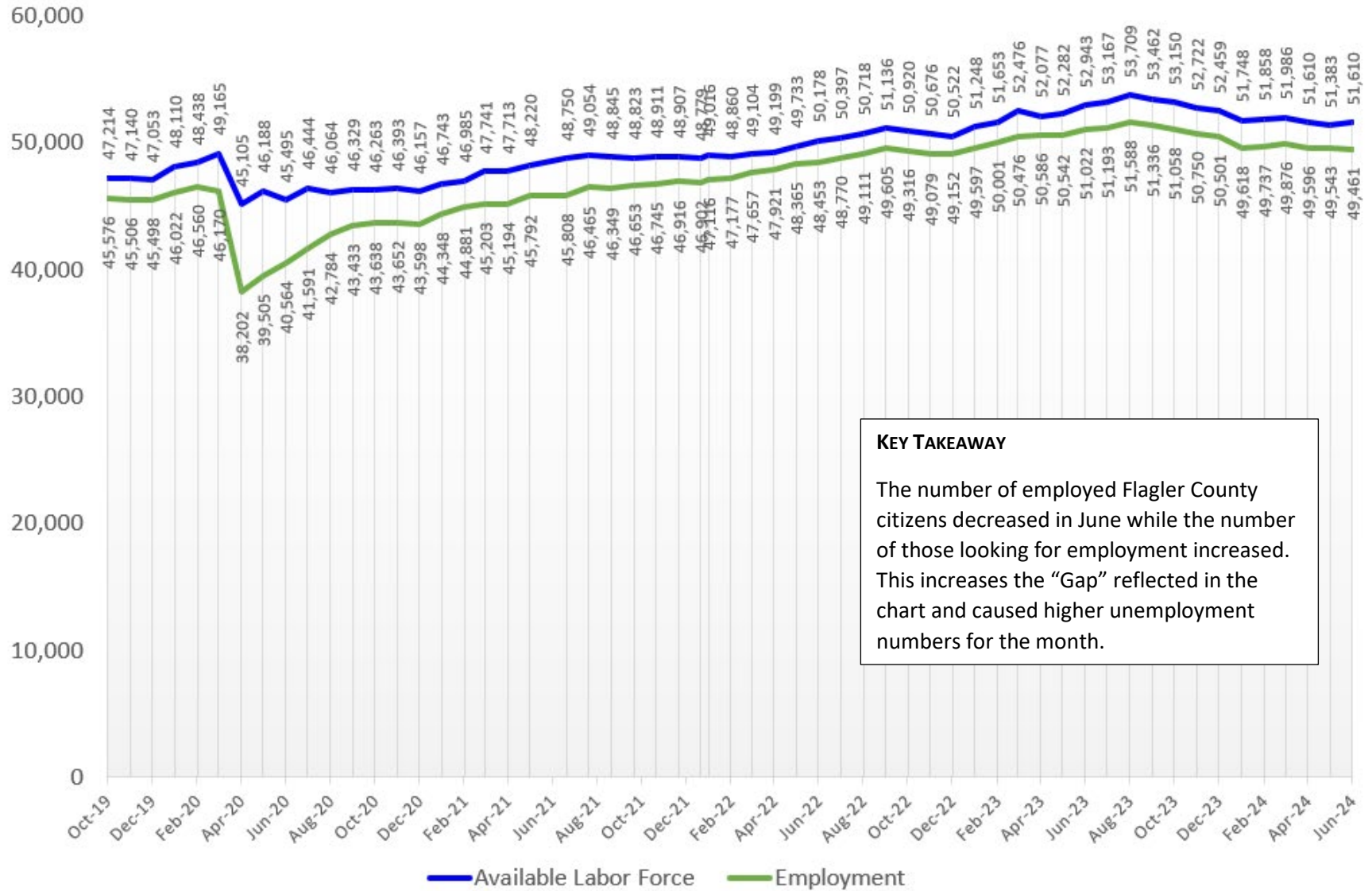
KEY TAKEAWAY

The number of available people in the Flagler County workforce increased slightly in June 2024.



FLAGLER COUNTY | AVAILABLE LABOR VS EMPLOYED FLAGLER COUNTY CITIZENS

Data Source: U.S. Department of Labor, Bureau of Labor Statistics, Local Area Unemployment Statistics Program

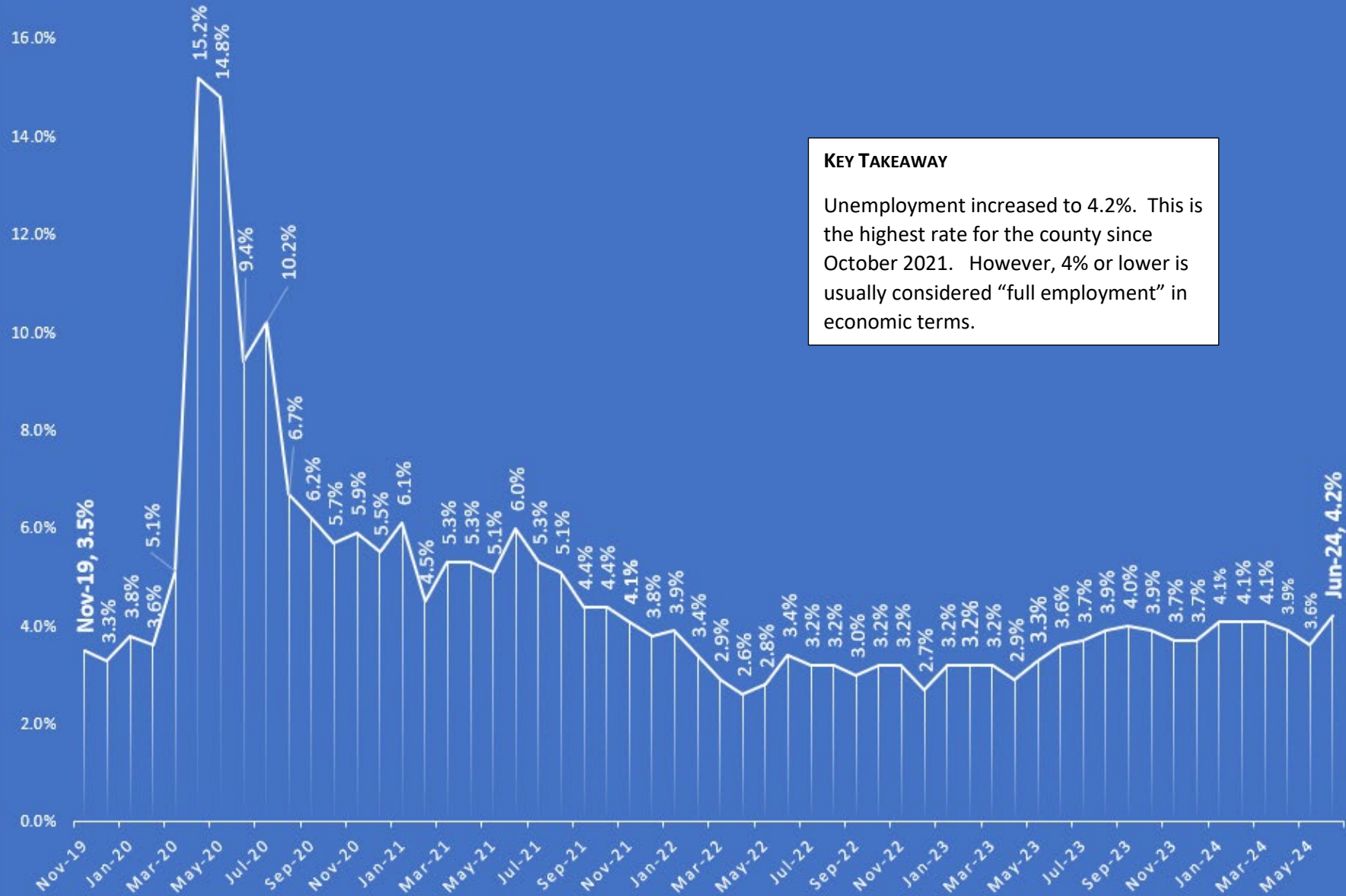


KEY TAKEAWAY

The number of employed Flagler County citizens decreased in June while the number of those looking for employment increased. This increases the “Gap” reflected in the chart and caused higher unemployment numbers for the month.

UNEMPLOYMENT TREND IN FLAGLER COUNTY | NOT SEASONALLY ADJUSTED

DATA SOURCE: FLORIDA DEPARTMENT OF COMMERCE, BUREAU OF WORKFORCE STATISTICS & ECONOMIC RESEARCH

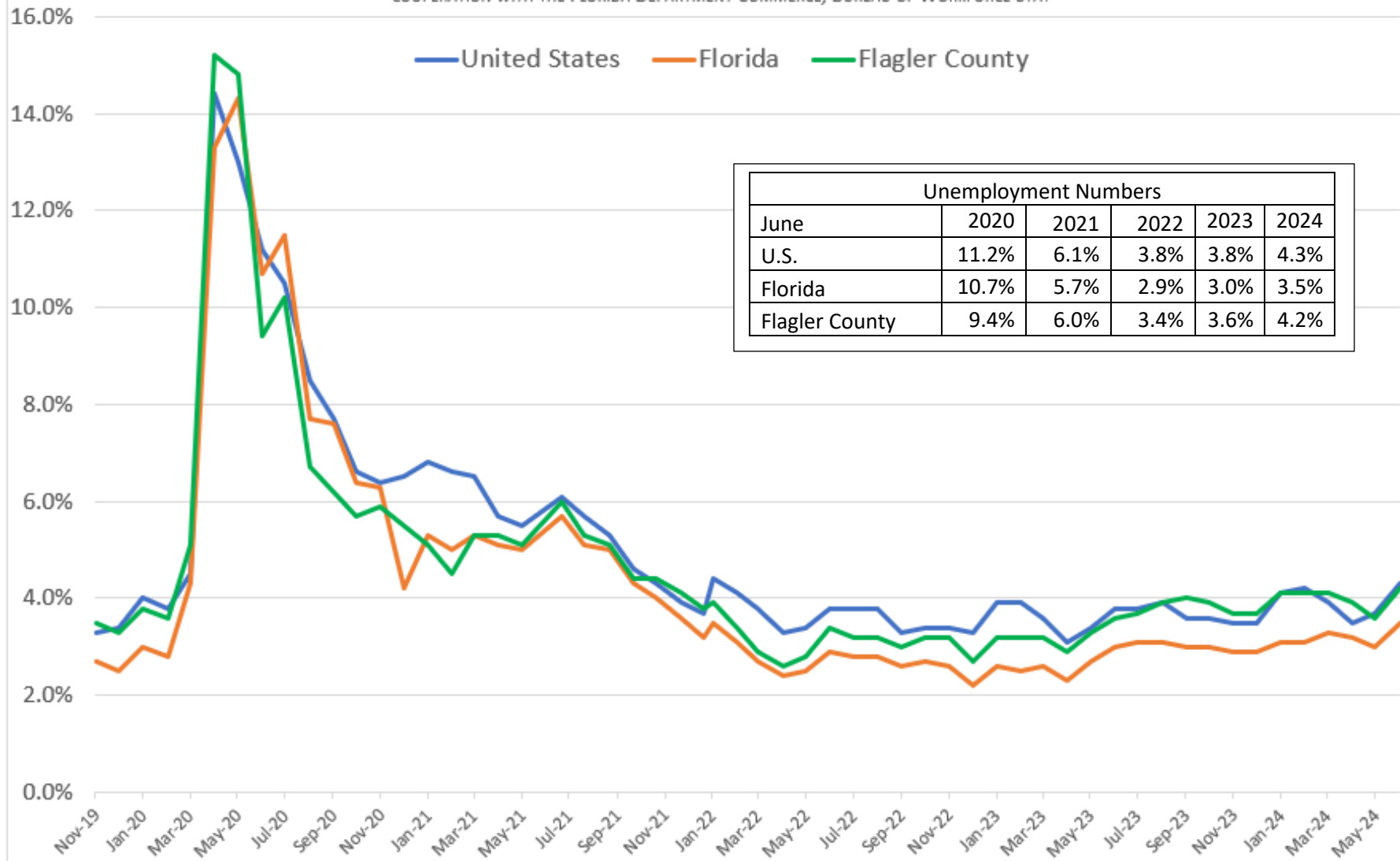


KEY TAKEAWAY

Unemployment increased to 4.2%. This is the highest rate for the county since October 2021. However, 4% or lower is usually considered “full employment” in economic terms.

UNEMPLOYMENT TREND COMPARISON | NOT SEASONALLY ADJUSTED

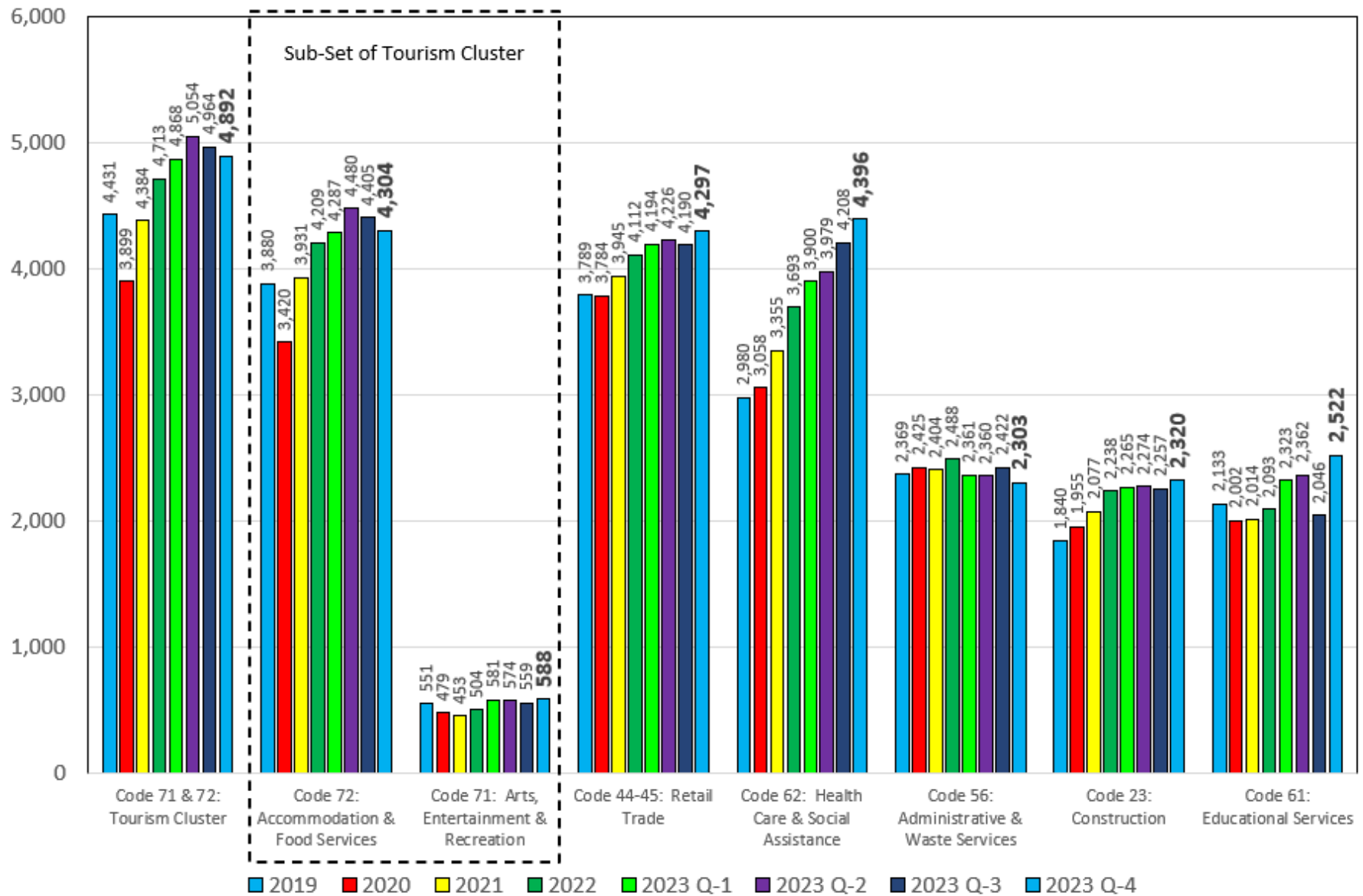
DATA SOURCE: DATA SOURCE: U.S. DEPARTMENT OF LABOR, BUREAU OF LABOR STATISTICS, LOCAL AREA UNEMPLOYMENT STATISTIC PROGRAM IN COOPERATION WITH THE FLORIDA DEPARTMENT COMMERCE, BUREAU OF WORKFORCE STAT



Unemployment Numbers					
June	2020	2021	2022	2023	2024
U.S.	11.2%	6.1%	3.8%	3.8%	4.3%
Florida	10.7%	5.7%	2.9%	3.0%	3.5%
Flagler County	9.4%	6.0%	3.4%	3.6%	4.2%

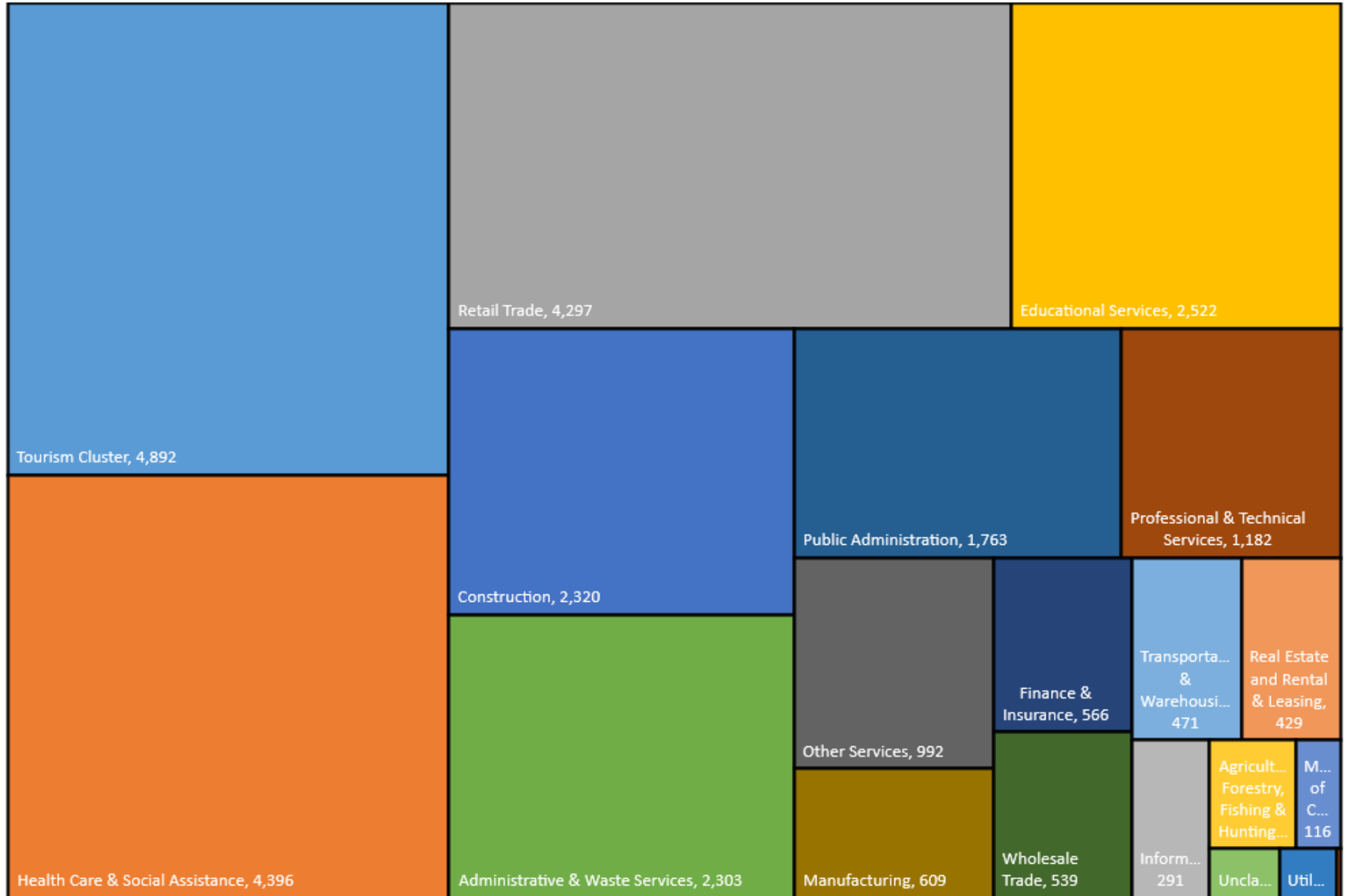
TOP INDUSTRY SECTORS BY NUMBER OF EMPLOYEES | FLAGLER COUNTY, FLORIDA

DATA SOURCE: FLORIDA DEPARTMENT OF COMMERCE - FLORIDA INSIGHT: DATA WITH MEANING



FLAGLER COUNTY EMPLOYMENT BY INDUSTRY SECTOR | 2003 Q-4 | 28,061 TOTAL EMPLOYEES

DATA SOURCE: DATA SOURCE: FLORIDA DEPARTMENT OF COMMERCE - FLORIDA INSIGHT: DATA WITH MEANING



FLAGLER COUNTY | POPULATION GROWTH

DATA SOURCE: US CENSUS BUREAU & BEBR-BUREAU OF ECONOMIC & BUSINESS RESEARCH, UNIVERSITY OF FLORIDA

Percentage Growth	
1990 - 2000	73.62%
2000 - 2010	92.04%
2010 - 2020	20.57%
2020 - 2023	13.32%

